

## *Singing A Song of Praise to God: An Interfaith Perspective*

## SISTERHOOD SHABBAT/ KAPLAN WEEKEND

The annual Sisterhood Shabbat/Kaplan Scholar-in-Residence weekend will take place from Friday to Sunday, February 3 to 5. This year's theme is *Singing A Song of Praise to God: An Interfaith Perspective*. Guest speakers will be Dr. Robert Lee Hill and Bishop Mark C. Tolbert. Renée Fuchs and Elaine Singer are co-chairs for the weekend.

Sisterhood Shabbat is celebrated nationally by all Sisterhoods affiliated with Women's League for Conservative Judaism. In conjunction with this observance, members of Sisterhood will lead the Shabbat dinner prayers and blessings. On Saturday morning Sisterhood members will lead the service. A special addition to this year's Shabbat activities will be the presence of USYers from all over the EMTZA region, who will be attending Winter Shabbaton here in Kansas City.

Mirra Klausner is in charge of the ritual arrangements for the weekend. Sisterhood members may sign up for the various English or Hebrew speaking parts either by signing the sheet posted in the Gift Shop or synagogue office or by contacting Mirra at:

[mirratodd@hotmail.com](mailto:mirratodd@hotmail.com).



On Sunday morning after services at 8:30 am and a light breakfast, attendees will travel by bus to attend Sunday morning services at Victorious Life Church and see some of historic Jewish Kansas City.

The weekend is subsidized by the Abe and Catherine Kaplan Fund and Beth Shalom Sisterhood. Invitations with more information have been mailed.

### Bishop Mark C. Tolbert



Bishop Tolbert has been Pastor of Victorious Life Church located at 34th and Paseo since 1989. A native of Kansas City, he graduated from Central High School and received his DD from Western Bible College.

Bishop Tolbert is a dynamic Gospel Artist under the Shakin' the Mountain Production label. He is the president of Dominion Heights Real Estate Development Company, Sparrow Community Development Corporation, The Lee A. Tolbert Charter School Board, Diocesan Bishop of the

Canadian District Council and Chairman of the Northwestern District Council of the Pentecostal Assemblies of the World. Weekly church services, televised in the Kansas City area, are broadcast on the internet at [BishopMarkTolbert.com](http://BishopMarkTolbert.com) and [StreamingFaith.com](http://StreamingFaith.com).

Bishop Tolbert has been married to Emelda Tolbert since 1978.

### Kaplan Weekend Speakers

### Dr. Robert Lee Hill



Dr. Robert Lee Hill has been pastor of the Community Christian Church in Kansas City for 25 years. He holds a B.A. degree from Texas Christian University (1977), an M.Div. degree from Vanderbilt University Divinity School (1980), and a DD degree from Christian Theological Seminary (2000).

Dr. Hill serves as a board member for Kansas City Hospice, Second Chance Foundation, and The Institute for Spirituality in Health. He has been the co-chair of the Greater Kansas City Martin Luther King Interfaith Worship Celebration for 20 years. Since 1993, Dr. Hill has been co-host of the radio call-in show, "Religion on the Line," on KCMO-Talk Radio 710AM. He is the author and/or editor of eight books.

He is married to Priscilla Reckling, and they live in the Brookside neighborhood in Kansas City, Missouri.

### In This Issue:

Sisterhood.....	3
Informal Ed .....	3
PRS/RFEC .....	5
B/BM .....	6
Kiddush Korner .....	7
Anniversaries .....	7
Steppin' Out .....	10
Kaplan Schedule..	12

See Back Cover for Schedule

# From the Rabbi's Study



## "Make Time for the Encouraging Word"

We all can look back on someone in our lives who made a difference because of the time that person took to mentor or guide us. Sometimes it was just a matter of showing interest or in offering a kind word. It was just what we needed at that moment.

I have tried to learn from these examples and to live my life similarly. Whenever I was in a position to make a difference, I have tried to do so. This probably, as much as anything else, has shaped my professional career.

I write this message now because we are entering the rabbinic selection season. We will hopefully have a number of visitors to our community. As important as it is for the candidates to make a good impression on us, it is equally important for us to impress them and to sell our community. We can do this in a number of ways. One obvious way would be by extolling the virtues of Kansas City living. Another more subtle but equally important way would be to take

the time to demonstrate that we are a caring community. We are concerned enough about people that we will make the time to involve ourselves in their lives. We know that we can make a difference in a person's life. This, too, is a great characteristic of our community.

This will tell the candidates a great deal about how special our congregational family is. We must also look for the individual who displays similar characteristics. A caring community deserves a caring rabbi. Let us place this at the forefront of our imagemaking efforts and hope that the rabbis who visit understand that this is an important criterion for Beth Shalom and Kansas City.

**Rabbi Alan Cohen**

[ravalan@bethshalomkc.org](mailto:ravalan@bethshalomkc.org) | 913-647-7294

### Adult Hebrew Classes

Sundays, Jan. 8, 15, 22, 29

(See web or school office for specific times)

### Sarah Peltzman Classes

Tuesdays, Jan. 10, 17, 24, 31 10 am

### Beth Shalom Adult Education Opportunities

#### Eat & Educate - Village Shalom

Thursdays, Jan. 12, 19, 26, Feb. 2 12 pm

#### Adult Trope Class

Thursday, Jan. 26 7:30 pm

Thursday, Feb. 2, 9, 16, 23 7:30 pm

### Mishnah Study Break

-Lathrop & Gage, 2345 Grand, #280, K.C.

Thursday, Jan. 12, 12 pm

### Jewish KC Bus Trip

Sunday, Feb 5, 9:30 am -Lamar

Dress for Services at Victorious Life

Clip and Save.



## New Years Resolutions

Have you made your New Years Resolutions yet? How about learning a new skill that you will enjoy and be able to use throughout the year? Join Hazzan Menes in an adult trope class. You will learn the basic melodies, symbols and terms for reading Torah over a five week period.

Classes begin Thursday January 26th at 7:30 pm and continue February 2, 9, 16 through the 23rd.

## CBS Member Raising Funds To Support JNF

Elana Goldberg, a Beth Shalom member and daughter of Marla Brockman and John Goldberg, will be going to Israel during her spring break from Boston University. She has registered for Jewish National Fund's Alternative Break trip to Israel. Elana will spend one week doing volunteer work and raising funds for various communities in the Negev. She needs to raise \$1100 to support JNF's Blueprint Negev Campaign, a major initiative of JNF to revitalize Israel's Southern region as part of her commitment. All contributions are tax deductible. You may donate online by visiting Elana's personal page at [http://support.jnf.org/site/TR/Events/ASBPages?px=3482762&pg=personal&fr\\_id=1680](http://support.jnf.org/site/TR/Events/ASBPages?px=3482762&pg=personal&fr_id=1680) or send your donation made out to Jewish National Fund to Elana Goldberg, 610 Beacon Street, Boston, MA 02215-2205.



### Beth Shalom will be putting on a Musical Purim Shpiel this year!

All those interested in singing, acting, playing an instrument or just looking funny, contact Jill Goldstein or Hazzan Menes in the Ritual Office, 913-647-7281 or email: [jgoldstein@bethshalomkc.org](mailto:jgoldstein@bethshalomkc.org).



**Hazzan Robert Menes**

[hazzanmenes@bethshalomkc.org](mailto:hazzanmenes@bethshalomkc.org) | 913-647-7296





## Beth Shalom Youth Events:

### Wednesday Night Programs

6:15-8 pm -Lamar

Jan. 4, 11, 18, 25

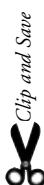
### Services & Special Programs

Friday, Jan. 6 – 4 pm

Grand Court, 119<sup>th</sup> & Lamar –  
Kabbalat Shabbat

Friday, Jan. 20 – 4 pm

Village Shalom – Kabbalat Shabbat



## KCUSY TO HOST WINTER SHABBATON

EMTZA Region's Winter Shabbaton will be held at CBS, February 3-5. Delegates from Denver, St. Louis, St. Paul, Des Moines, Omaha, Overland Park, and Minneapolis, will attend for a weekend of learning, ruach, friendship and fun! The USYers will be staying in homes as this is a "home hospitality" convention.

The USYers will be participating in services throughout the weekend and will be joining Sisterhood Shabbat for several meals!

The chairpeople are Sara Carl and Sam Abrams. For more information, or if you have any questions, please contact Stefanie Williams at [swilliams@bethshalomkc.org](mailto:swilliams@bethshalomkc.org).



## sisterhood

Linda Lessner, President | [shpres@bethshalomkc.org](mailto:shpres@bethshalomkc.org)

### Triple Mitzvot for the Ronald McDonald Charities



Sisterhood members recently performed three mitzvot for the Ronald McDonald Charities. They provided lunch in the Ronald McDonald Family Room for about 50 family members of very ill children being treated at Children's Mercy Hospital. In addition, they donated two hand-made afghan quilts for cozy warmth.



The third act of kindness was filling their freezer with muffins, cookies and other desserts.

The next RMFR luncheon will be held Thursday, Jan. 12. For more information, call Carol Yarmo, VP Community Services, (913) 642-1199 or email: [ryarmo@kc.rr.com](mailto:ryarmo@kc.rr.com).

### Sisterhood Donates Funds for Tapestry Preservation

Sisterhood has donated \$1,000 towards the refurbishment, moving and hanging of the two large sanctuary tapestries in Goldsmith Hall. This project was handled by specially trained conservators. These two tapestries are:

"Creation" is a needle point tapestry designed by Israel artist Kopel Gurwin and stitched by 65 Sisterhood members.

"Burning Bush" is a fiber tapestry designed and woven by Kansas City artist Janet Kuemmerlein. It was donated by Mr. and Mrs. Irv Maizlish and Mr. and Mrs. Stan Goldberg.

## Beth Shalom Sisterhood Upcoming Events:

### Sarah Peltzman Classes

Tues., Jan. 10, 17, 24, 31 10 am

### Mah Jongg

Thurs., Jan. 5, 19 9:30 am

### PrayerWorks

Wed., Jan. 25 10 am

### Community Service Ops.

For details on the following, contact Carol Yarmo, [ryarmo@kc.rr.com](mailto:ryarmo@kc.rr.com) or 913-642-1199

### Warm Up America

Thurs., Jan. 5 10 am

### Ronald McDonald House Family Room, Lunch

Thurs., Jan. 12 9:45 am

### SafeHome Lunch, Talk & Tour

Fri., Jan. 20 11:45 am

### Children's Place

### Sack Staple Goods

Mon., Jan. 23 12:15 pm

### Programs & Meetings

### SH Executive Board Meeting

Wed., Jan. 4 9:45 am

### SH Board Meeting

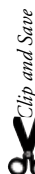
Wed., Jan 11 9:45 am

### Book Club

Wed., Jan. 18 6:30 pm

### Shabbat/Kaplan Weekend

Feb. 3 - 5 - See page 12 for schedule





# Executively Speaking

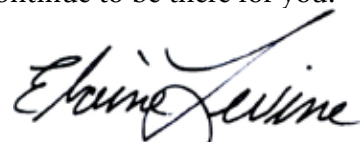
Welcome to 2012, a new year, new beginnings. One of the best things about being Jewish is we get to plan our new beginnings and we get to do this twice. If we did not get it exactly right the first time, now is our second chance.

So, let's plan to make Congregation Beth Shalom the place to be. We, the staff and the Board will continue to meet the needs of our members by enriching lives, opening up our membership to you in many meaningful ways. I hope that we can say that we help each other to be the best that we can be as Jews and as human beings. And we are more than this as well; our synagogue serves a diverse community. We have people with different needs and yet we all share a common bond, the desire to be part of a community that is centered on the qualities of caring and welcome. We will work hard to do our part, but we need you to join us, join us at services, join with us at events, join us to do good deeds, and I can assure you that we will continue to be there for you.

In essence, we want you...you are Congregation Beth Shalom.

Have a New Year filled with what we all desire most, good health, good times with family and friends and wishes and plans fulfilled.

In essence,  
you are Congregation  
Beth Shalom.



**Elaine Levine**

[elvine@bethshalomkc.org](mailto:elvine@bethshalomkc.org)

913-647-7293



## Congregation Beth Shalom's Transition Progress Update...

On Sunday afternoon, November 20, several Men's Clubbers and other members assembled at Wornall to take many items apart, including the Simcha Tree. Here is a photograph of the group in front of the partially disassembled Simcha Tree.



l to r: Bernie Ullman, Chuck Gasser, Neil Newman, Amit Levy-Mackay, Peter Beren, Jake Beren, Todd Hollander, Sam Matsil, Adam Matsil, Sandy Levine, Richard Simon, Ted Goldstein, Benjamin Simon and Justin Pfau.



Bob Copeland moves one of the large menorahs from the sanctuary at Wornall.



## As I see it...

*by Bev Newman, Scroll Editor*

Our congregation has occupied one facility at 142nd and Lamar for six months. We are still transitioning, but familiar ritual objects and art are joining us in our new home. We are learning new ways to utilize our building and finding that creativity works. Great programming is happening and will continue to happen in future months. Our Board recently approved a reorganization of our professional staff. We need to be supportive of the change that is happening. We are a warm, welcoming and cohesive community.

Beth Shalom is alive and well and looking forward to a new year with enthusiasm!



## Polsky Religious School (PRS)

Patti Kroll, Director of Education | [pkroll@bethshalomkc.org](mailto:pkroll@bethshalomkc.org) | 913-647-7290

### Technology Powers SMART Student Interactivity

Imagine students eagerly running up to a white board in the classroom ready to enter their responses to questions. This scene is taking place more and more each week as teachers are using the technology of a SMART board. Last year the Polsky Religious School was able to purchase this for the school and as teachers have received training, lessons are taking place using this amazing technology. Our third grade team of teachers, Jill Goldstein and Ida Levine are using this for online Hebrew reinforcement through games and regular in class reading and writing activities. In the second semester they will use this to take

virtual tours of Israel. The students love being able to play the games and write on the board.

The school was able to purchase the SMART board through a one time grant from SMART and with money from a community wide grant. It has been a great addition to our school and more teachers recognize the educational impact of this technology. This is one way we are keeping up with what students are doing in their other schools. We invite anyone who is interested in seeing this in action to visit in our third grade class.

### Other Events

Tenth graders will participate in a series of workshops run by Susie Hurst, of Jewish Family Services, which begins January 8th. This series helps teens explore the impact of their choices and the consequences of those choices in a Jewish context. Topics include: Coping with Stress, Healthy Relationships, Character Exploration, Substance Abuse and Spirituality.

Parent-Student-Teacher Conferences will be Wednesday, January 25th, for grades 2-7. Contact Deah Rubin in the school office for a conference time.

### Beth Shalom PRS Blast:

**Monday Journeys, 4:15 pm**

*Mondays, Jan. 9, 23, 30*

**PRS Hebrew High, 7 pm**

*Tuesdays, Jan. 10, 17, 24*

**PRS 7-10th Graders Special Event!**

*At JCC, Wed, Feb. 1 6:30-9 pm*

**7<sup>th</sup> Grade Class, 9 am**

*Saturdays, Jan. 7, 14, 21, 28\**

**B'Yachad (K-5<sup>th</sup>), 10 am**

*Saturdays, Jan. 7, 14, 21, 28\**

**No School Monday, Jan. 16**

### Special Programs:

**Sunday, Jan. 22**

*9<sup>th</sup> Grade Driving Risk Awareness  
At JCC 10 am*

**Wednesday, Jan. 25**

*2nd-7<sup>th</sup> Grade Students  
Parent / Student / Teacher Conferences*

**\*Saturday Jan. 28 - 7<sup>th</sup> Grade,**

**B'Yachad Classes at JCC**

*Conference Room A*

Clip and Save



## Rose Family Early Childhood Education Center

Judy Jacks Berman, Director | [jjb@bethshalomkc.org](mailto:jjb@bethshalomkc.org) | 913-647-7287



Winter is a great time to enjoy family time with your little ones! Indoor swimming at the Matt Ross Community Center at 8101 Marty or the

Jewish Community Center, is a fabulous activity for the whole family, regardless of age! Pajama Parties and family movie nights with popcorn and fun snacks are always a great winter treat! Family game nights, make your own English Muffin Pizza or make your own Tacos are always fun! How about a trip to the library to check out some new books? Jumping Jax, Pump it Up or Monkey Business are good ways to burn energy on a cold wet day. And, when it is really snowy, bundle up and play in the snow or go ice skating, and don't forget to end the day with yummy hot chocolate!

Enjoy the winter. It can be so much fun!

### Beth Shalom RFEC In The Loop...

**School Resumes**

*Tues., Jan. 3*

**New Toddlers Visit Day**

*Thurs., Jan. 5 10 am*

**M.L.K. Day - No School Jan. 16**

**Ruach & Roll - 11:15 am**

*Tues., Jan. 17, 24, 31*

**Peek-A-Boo Toddler & You - 11 am**

*Wed., Jan. 18, 25*

### Special Events

**Tot Shabbat 10:30 am**

*Sat., Jan. 21*

**Getting Your Kid Ready for Kindergarten**

*Wed., Jan. 25 at JCC, 7 pm*

Clip and Save





# CELEBRATING LIFE CYCLE EVENTS

*Ecclesiastes 3:1*

*Submit your B'nei Mitzvah announcements to be published.*

## *Mazal Tov to our B'nei Mitzvah*

### *Abigail Wordsworth*

*January 14, 2012 • 19 Tevet 5772*



Abigail Lauren Wordsworth's parents are Jamie and Jeff Wordsworth. Her grandparents are Judy Bell and the late Martin Bell and James and Judy Wordsworth. Her siblings are Kyle and Brady. As a student at Overland Trail Middle School, Abby enjoys swimming, music and hanging out with her friends and family. In her many community outreach projects, Abby volunteered at Harvesters, Whatsoever Community Center and Gordon Park Elementary School. Relatives and Friends are invited to worship with the family and attend the Kiddush Luncheon following the service.

### *Joshua Eisemann*

*January 21, 2012 • 26 Tevet 5772*

Joshua Dean Eisemann is the son of Leslie D. Mark and Mark D. Eisemann. His grandparents are Dr. and Mrs. Gustave Eisemann and Ambassador David E. Mark and Mrs. Elisabeth L. Mark. Josh has a sister, Emma and brother, Noah. As a student at Pembroke Hill School, he likes running cross country and soccer. He enjoys reading and Wizards 101. His community service project included raising funds for sports equipment for St. Mary Kevin Orphanage, Kajjansi, Uganda and making a video to teach the kids how to play Ultimate Frisbee. Family and friends are invited to worship and celebrate with Josh and please stay for Kiddush Luncheon following the service.



### *Eliana Simon*

*January 28, 2012 • 4 Shevat 5772 • at JCC*



Eliana Belle Simon's parents are Connie and Richard Simon. Her grandparents are Berenice and Roger Haberman and Betty and Don Siegel from St. Louis. Eliana has a brother, Benjamin. While attending Oxford Middle School, she likes to play the violin, to act in school plays, and to run track. For her community outreach project, Elie is collecting blankets and towels for Wayside Waifs. Relatives and friends are invited to worship with the family at the JCC and attend the Kiddush Luncheon following the service.



# CELEBRATING LIFE CYCLE EVENTS



## January Anniversaries

*Ecclesiastes 3:1*

January Anniversaries will be honored during services on Shabbat morning, January 21. To sponsor a Kiddush, contact Norm Levitan, 913-647-7283 or [nlevitan@bethshalomkc.org](mailto:nlevitan@bethshalomkc.org).



## Kiddush Korner

Get involved in Shabbat at CBS! Sponsor a Kiddush Luncheon after services in honor or memory of a loved one. For more information, contact Norm Levitan at 913-647-7283 or [nlevitan@bethshalomkc.org](mailto:nlevitan@bethshalomkc.org). January 7—sponsored by anonymous donors.

*Welcome New Member*  
*Jerold A. Bressel*

Day		Years
1	Maurice & Ida Luchen	57
	Morton & Harriet Mann	61
2	Scott & Susan Krigel	35
	Victor & Annie Wishna	2
6	Thomas & Natalie Hoskins	5
	William & Marcelle Kaiser	66
	Mark & Mara Lambert	4
	Gary & Marcy Rydell	27
8	Donald & Sharon Cohen	56
	Miles & Sally Ross	34
9	David & Sylvia Radasky	40
	Jimmy & Sonia Rosenbloom	29
16	Marvin & Evelyn Gibian	63
	William & Jodi Rosenthal	29
20	Andrew & Vicki Widman	10
25	Jerry & Helene Ginden	47
	Jeffrey & Arlene Misler	43
	Michael & Andrea Wildman	9
27	George & Floriene Lieberman	63
28	Michael & Sharon Milens	45
	Robert & Barbara Palan	44

## Mazal Tov to...

*Submit your Mazal Tov to be published*

Hannah Rose Miller, granddaughter of **Gertie Epstein** and the late **Sam Epstein**, upon her election as Hillel President at Syracuse University.

**Earl and Shirley Unell** upon the Bat Mitzvah of their granddaughter, Gennifer Unell in Scottsdale, Arizona December 3. Gennifer's parents are Joe and Marcia Unell. Her maternal grandparents are Bert and Sue Kwasman, all of Scottsdale.

**Amy Shapiro** upon being named a Jewish Federation Next-Gen Leader.

**Seth and Robyn Freiden** upon the birth of their daughter, Kara Harper on November 15. Grandparents are: **Floyd and Bari Freiden** and **Mike and Anne Jacobs**. Great grandparents are: Harold and Phyllis Hurst, Robert and Sylvia Jacobs, and Elvin Klein. Kara's sibling is Dylan Ari.

**Dr. Jay and Sandra Rozen** who have been honored by HCA Corporation and Research Hospital for their many years of dedication, time and effort to the hospital.



### Unstuffed Cabbage

#### Preparation:

Cut cabbage into 1" wide strips and place into an 8 quart stock pot. Add ginger ale, ketchup and lemon juice to the cabbage. Cover, bring to a boil and cook 15 minutes at a rolling boil.

Add onion, eggs and rice to the meat. Form into small balls and add to cabbage and liquid mixture. Add salt and pepper to taste. Simmer for two hours covered.

Great with mashed potatoes, salad and rolls. (Cathy's mother-in-law loves this dinner.)

#### Ingredients:

- 1 large head of cabbage
- 2 pounds ground beef
- 2 eggs
- 32 oz jar ketchup
- 33 oz. ginger ale (1/2 liter)
- 1/4 cup raw rice
- 1 medium onion grated
- 1/2 tsp. lemon juice



Casino Night

## Of Blessed Memory

We express condolences to our Beth Shalom Members, their Families and Friends.

**Bernard Levitch, z"l, November 29 / 3 Kislev**

**Isadore Bressel, z"l, December 4 / 9 Kislev**

**Herbert Brooks, z"l, December 5 / 9 Kislev**

**Sylvia Oshrey, z"l, December 5 / 9 Kislev**

**Jacob Friedman, z"l, December 15 / 19 Kislev**

**Geraldine Brown, z"l, December 16 / 20 Kislev**

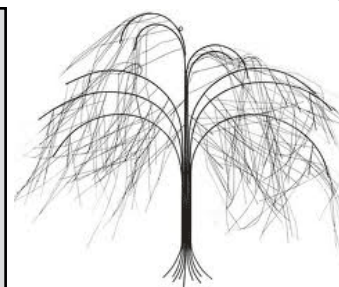
**Clara Bell Fox, z"l, December 18 / 22 Kislev**

**Rebecca Schorr, z"l, December 18 / 22 Kislev**

**Brett Weiner z"l, December 23 / 27 Kislev**

**Michael Wajcman, z"l, December 26 / 30 Kislev**

**Arthur Katz, z"l, December 27 / 1 Tevet**



## Yahrtzeits

Join us for morning or evening minyan to say Kaddish for your loved one. [See service schedule, page 11.](#)

### 6 Tevet-Jan 1

Judy Barash  
Joseph Bernstein  
Solomon Bortnick  
Rebecca Friedman  
Lillian Katz  
Meyer Kornblum  
Roy Kort  
Joseph Peltzman  
Simon Shankman  
Lena Silverman  
Esther Silverstein  
Hinda Waldman  
Hanan Wedlan

### 7 Tevet-Jan 2

Rebecca Greenblot  
Flo Harris  
Jennie Hoffman  
Dora Levi  
Fannea Lewis  
Israel Linsitz  
Sam Miller  
Louis Peltzman  
Hyman Rappaport  
Rose Silverberg  
Sara Weinberg

### 8 Tevet-Jan 3

Lena Baranor  
Charmaine Fredman  
Clarence Gershon  
Lily Ginsberg  
Jeffrey Greenberg  
Ben Jacobson  
Hyman Junsberg  
Ruth Lerner  
Minnie Levine  
Ruth Litvien  
Edna Milens  
Morris Rich  
Joe Rutlader

### 9 Tevet-Jan 4

Mary Adelman  
Marjory Bergson  
Helen Cohen  
Rosa Dollman  
Betty Ginsberg  
Louis Goldfinger  
Bessie Greenberg  
Paul Hoffman  
Joseph Horovitz  
Lester Kahn  
Sarah Levin  
Helene Present  
Esther Salvay

### Chana Sander

Ida Shure  
Louis Walter

### 10 Tevet-Jan 5

Morris Cohen  
Simon Ginsburg  
Fannie Goodman  
William Greenberg  
Gazella Gulinson  
Eddie Jacobs  
Anna Klein  
Theodore Mack  
Rachel Mesuse  
Max Pollock  
Sam Price  
Anna Rubin  
Leah Weber

### 11 Tevet-Jan 6

Meyer Eichenberg  
Louis Ellis  
Fanny Feingold  
Hannah Funk  
Louis Horovitz  
Jack Jacobsen  
Bessie Kars  
Nathan Katz  
Samuel Katzman  
Pauline Klein  
Celia Lieberman  
Sam Nelkin  
Ida Statland  
Mordecai Taxman

### 12 Tevet-Jan 7

Alvin Capito  
Etta Kur  
Henny Meyerhoff  
Rose Ribakoff  
Bella Sarno

### 13 Tevet-Jan 8

Nathan Block  
Isaac Chocron  
Sidney Feinberg  
Lillian Fox  
Arthur Funk  
Max Gordon  
Harry Jacobs  
Goldie Koden  
Isreal Kosovitz  
Dorothy Levy  
Abe Rogell  
Rose Singer  
Sally Stoloff  
Minnie Zalusky

### 14 Tevet-Jan 9

Louis Barash  
William Copaken  
Elimelech Gordon  
Harry Horovitz  
Zissel Kamar  
Jules Kohn  
Fanny Krasne  
Irving Malashock  
Kate Meltzer  
Harold Riss  
Joseph Rittmaster  
Cyd Sandelman  
Morris Schneider  
Sophia Walter  
Isaac Zale

### 15 Tevet-Jan 10

Sophia G Adelman  
Jacob Bernstein  
Blanche Bloch  
Louis Bronstein  
Bessie Cohen  
Simon Dubinsky  
Jeanette Gidinsky  
Mary Greenstein  
Clara Gumowitz  
Joseph Gutovitz  
Sam Hipsh  
Frank Katz  
Max Klein  
Abraham LaBow  
Sarah Lesky  
Frances Levitch  
Samuel Lichtor  
Sol Morris  
Michael Rafiel  
Bessie Rubenstein  
Fannie Schick

### 16 Tevet-Jan 11

Marvin Copeland  
Herman Fabian  
Rahle Gelhaar  
Ike Grossman  
Edward Kanter  
Harry Levin  
Elsa Levin  
Rose Levine  
Minnie Levy  
Jacob Pfeffer  
Israel Schlozman  
Barney Stevens

### 17 Tevet-Jan 12

Charles Berger  
Lena Bergman

### Rhonda DeLong

David Dolginow  
Milton Franks  
Ely Freed  
Rose Geller  
Ada Gershon  
Betty Helfand  
Rose Hershon  
Emanuel Joffee  
Samuel LaPort  
Harry Levine  
Marie Millstein  
Harold Nicholas  
Selma Reingenheim  
Harry Yukon

### 18 Tevet-Jan 13

Micah Bratt  
Harry Byers  
Anna Feld  
Nathan Haith  
Seena Kaufman  
Charlotte Kline  
Mamie Krigel  
Bessie Rogozenski  
Barney Stone

### 19 Tevet-Jan 14

Harry Baier  
Frances Berger  
Freda Block  
Jacob Cohen  
Florence Denebeim  
Sidney Glaser  
Melvin Greenberg  
Edward Hoffman  
Simon Kulvin  
Frank Levin  
Steve Pack  
Michael Rosenbloom  
Lena Smith  
David Spellman

### 20 Tevet-Jan 15

Albert Ball  
Hayman Barewin  
Sam Baum  
Morris Brown  
Boris Galitzky  
Sarah Ginsberg  
Harry Gitterman  
Dorothy Gottlieb  
Livie Halperin  
Seymour Traxler  
Morris Wolfson

### 21 Tevet-Jan 16

Harriet Azorsky  
Baila Baellow  
Kelman Bovos  
Arvie Goldstein  
Henry Hakan  
Daniel Hollub  
Earl Katz  
Isadore Marks  
Esther Morris  
Shirley Moskovitz  
Benjamin Portman  
Betty Shenker

### 22 Tevet-Jan 17

Paul Bayzman  
Max Benjamin  
Gustav Einhorn  
Jacob Grinpas  
Arthur Harris  
Sherry Kaplan  
Isadore Levine  
Mildred Lipsey  
Badannah Silverman  
Sidney Simon  
Sarah Smith  
Rita Tilzer  
Bessie Turock

### 23 Tevet-Jan 18

Martin Brenner  
Morris Dunn  
Bertha Dworkowitz  
Bessie Ellis  
Helen Feingold  
Anna Grossman  
Thelma House  
Rose Jacobson  
Daniel Markel  
Solomon Rubinfire  
Rachel Schere  
Irving Schoenwald  
Rebecca Schreiber  
Mollie Schwartz

### 24 Tevet-Jan 19

Roy Bisman  
Robert Blond  
Felicia Kisluk  
Ella Lieberman  
Rose Millstein  
Leonard Rifas  
Fannie Rothschild  
Mary Taxman

### 25 Tevet-Jan 20

Sam Barash

Gustave Eisemann  
Gilbert Katz  
Manuel Levine  
Julia Liebershon  
Archie Louis  
Reuben Peltzman  
Milton Silverman  
Phillip Solomon  
Fannie Spector  
Phillip Wider

### 26 Tevet-Jan 21

Gussie Cohen  
Yetta Czarlinsky  
David Diamant  
Otto Sherry  
Stanley Siegel  
Ben Simons  
Stephen Wayne  
Lena Wienshienk  
Shlomo Yeshiahua

### 27 Tevet-Jan 22

Donald Alpert  
Minnie Bayzman  
Benjamin Finkle  
Thomas Goldenberg  
Jennie Gordon  
Herbert Greenberg  
Helen Kaufman  
Victor Lerner  
Louis Yudkofsky

### 28 Tevet-Jan 23

Diana Altshuler  
Sam Berman  
Tavia Blender  
Ida Bloom  
David Brockman  
Karl Eisemann  
Jean Glazer  
Abraham Granoff  
David Hadas  
Herbert Hakan  
Rose Josephson  
Daniel Katzman  
Clara Kraft  
Jacob Rabenowitz  
Joseph Ruback  
Anna Saver  
Mushi Selichonok  
Jerry Taube  
Samuel Wallman

### 29 Tevet-Jan 24

Julius Behrman  
Joseph Biederman  
Pauline Blonsky  
Leo Eveloff  
Margaret Goldman  
William Goodman  
Stephen Greenstein

Ruth Hyman  
Raydelle Josephson  
Wolf Kort  
Israel Levin  
Isaac Lieberman  
Sherman Rozenblit  
Sarah Smith  
Isadore Stolov  
Richard Wasserman  
Anna Wolberg

### 1 Shevat-Jan 25

Joseph Greenblot  
Essak Levitch  
David Luke  
Sophia Matzdorff  
Abraham Osep  
Abe Oshry  
Nat Pfefer  
Lee Seelig  
Rose Seiffer  
Marion Stolov  
Henry Walker

### 2 Shevat-Jan 26

Herman Asotsky  
Bruce Bovos  
Della Fox  
Paul Frischer  
Rebecca Katz  
Rose Kurtz  
Helen Lieberman  
Norman Yarmo

### 3 Shevat-Jan 27

Jennie Abend  
Morris Berman  
Marvin Brown  
Samuel Burnstein  
Beila Dorfman  
Glady's Eisman  
Barney Friedson  
Bertha Gershon  
Dora Gerson  
Isaac Gilgus  
Harry Katz  
Ksell Kusnetzky  
Edmund Oelsner  
Zelda Penner  
Morris Rolsky  
Anna Rosenblum  
Milton Shapiro  
Harry Sheskin  
Libbie Wallman  
Lois Weiner

### 4 Shevat-Jan 28

Samuel Blond  
Ida Cohen  
Martin Finkelstein  
Martha Forrest  
Lillian Gelb

Nathan Golding  
Kalman Grollman  
Esther Hoffman  
Isaac Isenberg  
Rose Kahn  
Michael Katz  
Bertha Kowolsky  
Bertha Matters  
Philip Phillips  
Ida Portman  
Richard Rapaport  
Rubin Shapiro  
Max Trossman  
Sheindel Yukon

### 5 Shevat-Jan 29

Granum Chernoff  
Cecil Dallen  
Daniel Davis  
Helen Eisen  
Louis Goldman  
Sarah Jacobson  
Rose Lefkowitz  
Jack Meyers  
Nathan Nelkin  
Blanche Pelofsky  
Norman Weiner

### 6 Shevat-Jan 30

Louis Baranov  
Eva Cooper  
Mary Farber  
Ester Goodman  
Meyer Grollman  
Barney Karbank  
Rose Katz  
Rose Katzeff  
William Litwin  
Milton Searles  
Lena Segal  
Samuel Winer

### 7 Shevat-Jan 31

Jake Cohn  
Evelyn Coleman  
Molly Epstein  
Elliot Gale  
Barnett Gottleib  
Leon Joseph  
Louis Kalinsky  
Louis Krashin  
Melvin Krigel  
Tillie Kusnetzky  
David Lieber  
Minnie Miller  
Bertha Pittell  
Rebecca Schlaifer  
Abe Sosland  
Sophia Taxman



# Todah Rabbah!

תודה רבה

The following contributions have been made in honor or memory of Beth Shalom family and friends and reflect donations thru December 10, 2011. We wish a hearty Todah Rabbah to all contributors for their support.

Donations of \$10 or more per tribute are acknowledged in **The Scroll**.

To contribute to our many funds, please contact the office at 913-647-7279 or click here. -Thank you.

## Ada Hoffman Camp Ramah Scholarship Fund

In Memory of:  
Florence Cortés  
Carlos F. Cortés  
Gary & Debby Cortés

## Arthur Brand Leadership Fund

In Memory of:  
Clara Brand  
Bertha Zimmerman  
Betty Brand

## Benjamin Ryweck Torah Fund

In Honor of:  
Rickie Haith's  
speedy recovery  
Shirley Gottstein  
Rabbi Morris  
Margolies' 90th BD  
Joan March

In Memory of:  
Jay Gottstein  
Shirley Gottstein  
Walter I. March  
Joan March  
Isaac Zale  
Ellie Barok Zalusky  
Minnie Zalusky  
Susan Zale

## Beth Shalom Chesed Committee Fund

In Honor of:  
Rickie Haith's speedy  
recovery  
Dolores Sosnow's BD  
Marvin & Carol  
Goldstein

In Memory of:  
Annette Sonnenschein  
Marvin & Carol  
Goldstein

## Beth Shalom General Fund

In Honor of:  
Jeff Blackman  
Receiving the 2011  
Kovod Award  
Rhea Salasche &  
Harold Kaseff  
Dr David Jacobs'  
speedy recovery  
Rickie Haith's  
speedy recovery  
Neil & Blanche  
Sosland  
Susie Goldsmith's BD  
David Gale & Gina  
Kaiser  
Rickie Haith's  
speedy recovery  
Liz Bohm  
Earl & Shirley Unell  
David & Judy  
Weinstein

Jen Paul Receiving  
Leadership Award  
Rhea Salasche &  
Harold Kaseff  
Maurice & Ellen Soltz  
Grandson's B/BM  
Susie & Paul  
Blackman  
Morton Sosland  
Rec'ving JCRB/AJC  
Award  
Joel & Brenda Pelofsky

In Memory of:  
Rose Bayzman  
Steven & Marcia  
Schorr  
Joel Bock  
David & Lynne Bock  
Anna Bodker  
Stanley Bodker  
Rebetzen Burstein  
Sol Burstein  
Harry Eisman  
Sanford & Evelyn  
Eisman  
Rose Fried  
Barbara Bogard  
Clara Gershon  
Justin Gershon  
Nathan Gilbert  
Rabbi Michael &  
Karen Zedek  
Harry Kanter  
Frieda & Warren  
Soble  
Dr Morris Tropp  
Sid & Nan Kanter  
Ruth Planzer  
Neil Planzer  
Max Rotman  
Dorothy Tonkens  
Ross & Candace  
Tonkens  
Leonard Shopmaker  
Nancy Morais  
Annette Sonnenschein  
David & Rosalyn  
Burnstein

## Beth Shalom Lechem Fund

In Honor of:  
Sherrill Friedman's  
90th BD  
Judy Krug  
Jill Goldstein  
Judy Wasserman  
Joyce Kalender's  
speedy recovery  
Bernard & Marcia  
Eveloff

In Memory of:  
Bernard Fabian  
Ida Fabian  
Herman Fabian  
Annette Sonnenschein  
Ken & Sandi Lerner  
Ben Lerner  
Alan & Tina  
Chapman

## Beth Shalom Library Fund

In Honor of:  
Dr. David Jacobs'  
speedy recovery  
Helen Coppaken

## Beverly & Harvey Bodker Endowment Fund

In Honor of:  
Jill Goldstein  
Harvey Bodker  
In Memory of:  
Beverly Bodker  
Hoit Campbell  
Sadie Klein  
Betsy Bodker  
Beverly Bodker  
Annette Sonnenschein  
Fred & Cindy Bodker

## Cemetery Maintenance Fund

In Memory of:  
Jerry Abrams  
Mitch & Lisa  
Hamburg  
Sylvia Bogmol  
Maxene Bogmol  
Walter Eichenwald  
Mildred Eichenwald  
Karl & Irene  
Eisemann  
Nathaniel & Lillyan  
Rickle  
Gus & Elinor  
Eisemann  
Sara Kantor  
Joseph Singmon  
Eleanor Abrams  
Mitch & Lisa  
Hamburg  
Ceceila & Mendle  
Silverman  
Lena Silverman  
Marilyn Margolis  
Barney Summers  
Charles Summers

## Eugene & Shirley Novorr Tots for Torah Fund

In Memory of:  
David Ginsberg  
Anna Ginsberg  
Dorothy Novorr  
Shirley Novorr

## Celia Gershon Hadas Scholarship Fund

In Memory of:  
Rabbi Gershon Hadas  
Hedva Glickenhau

## Hanan Wedlan Family Fund

In Memory of:  
Jerry Abrams  
Reva Kaufman

Sam Wedlan  
Eleanor Abrams  
Jerome Abrams  
Dolores Wedlan

## Harry Puritz Scholarship Fund

In Memory of:  
Harry Puritz  
Carl Puritz

## Helen Rae & Sydney Cerier Teacher Develop't Fund

In Memory of:  
Lore Mallin  
Helen Rae Cerier

## Jacob H & Rose Levine Teacher Develop't Fund

In Honor of:  
Rickie Haith's  
speedy recovery  
Peter & Bev Newman  
In Memory of:  
Maury Epstein  
Peter & Bev Newman

## Karbank Fund

In Honor of:  
Mark & Diane  
Davidner  
Robert & Vicki  
Feldman

## Kiddush Fund

In Honor of:  
Rickie Haith's  
speedy recovery  
Marvin & Carol  
Goldstein  
Katie Goldstein's B/BM  
David & Rosalyn  
Burnstein  
In Memory of:  
Doreen Berenbom  
Anne Bratt  
Hoit Campbell  
Marvin & Carol  
Goldstein  
Marvin & Adelle's  
Brother-in-law  
Alice Lieberman  
David & Rosalyn  
Burnstein  
Annette Sonnenschein  
Rhea Salasche &  
Harold Kaseff

## Mendel & Sarah Small Fund

In Memory of:  
Mendel Small  
Marshall & Mary  
Small

## Miriam Romotsky Tay Sachs Fund

In Honor of:  
Harold & Janet Price's  
Anniv.  
Gary & Debby Cortés

In Memory of:  
Sylvia Romotsky  
Gary & Debby Cortés

## Polsky Religious School Fund

In Memory of:  
Louis Kahn  
Natalie Kahn Neck  
Lee Ann Saltzman

## Prayer Book Fund

In Honor of:  
Jeff Blackman  
Receiving the 2011  
Kovod Award  
Judy Wasserman

## Rabbi Cohen Discretionary Fund

In Honor of:  
Wyatt Coppaken's Bris  
Toby Chod  
Kara's Baby Naming  
Seth & Robyn Freiden  
Rickie Haith's speedy  
recovery  
Katie Goldstein's B/BM  
Jerry & Barbara  
Cosner

In Memory of:  
Doreen Berenbom  
Annette Sonnenschein  
Jerry & Barbara  
Cosner  
Eugene Novorr  
Shirley Novorr  
Jessie Rothenberg  
Al & Barbara  
Beitchman

## Rose & Sol Stolowy Fund

In Memory of:  
Albert Goller  
Mike & Laurel  
Rogovein  
Sol Stolowy  
Mike & Laurel  
Rogovein  
Rose Stolowy

## Rose Family Early Childhood Education Center

In Honor of:  
Patti Kroll's speedy  
recovery  
Hanan & Natalie  
Hammer

In Memory of:  
Doreen Berenbom  
Rose Family Early  
Childhood Education  
Staff  
Miriam Krantz  
Ben & Debra Rubin  
Rudolph V. Block  
Kelley Block  
Dorothy Bodker  
Joel & Hildy  
Goldman  
Benjamin Faigen  
Berenice & Roger  
Haberman  
Herbert Goldberg  
Jeff & Corrine  
Blackman

## Rose S Levine & Doris L Flam Arts & Education Fund

In Honor of:  
Jen Paul Receiving  
Leadership Award  
Paul Lerner  
In Memory of:  
Alois Stulz  
Milton & Marjorie  
Adler

## Sam & Esther Daniels Prayer Book Fund

In Memory of:  
Rose Fried  
Donald & Ruthann  
Zurovsky

## Sidney Ginsburg Endowment Fund

In Memory of:  
Keith Pack  
Florence Pack

## Siegler Family Fund

In Honor of:  
Jeff Blackman  
Receiving the 2011  
Kovod Award  
Dr David Jacobs'  
speedy recovery  
Lore Mallin  
Dolores Sosnow's BD  
Merna Siegler  
In Memory of:  
Doreen Berenbom  
Annette Sonnenschein  
Merna Siegler

## Sylvan Siegler Scholarship Fund for Jewish Camping

In Honor of:  
Jeff Blackman receiving  
Kovod Award  
Rickie Haith's  
speedy recovery  
David Jacobs'  
speedy recovery  
Jen Paul receiving  
Leadership Award  
Ben & Debra Rubin

## Tommy & Bert Rogovein Memorial Fund

In Memory of:  
Celia Rogovein  
Eva Schwartz  
Mike & Laurel  
Rogovein

## Tot Shabbat

In Honor of:  
Oct. Tot Shabbat  
Seymour & Marsha  
Krinsky

## Walter & Anita Loeb Scholarship Fund

In Memory of:  
Walter Loeb  
Linda Beebe

## WHEN YOU CARE ENOUGH TO REMEMBER SOMEONE...

Send a Sisterhood Book of Remembrance card to honor a birthday, anniversary, recovery or any other happy occasion, or send a card in memory of a loved one. Cards may be purchased for as little as \$6 each or 6 cards for \$30 in the Beth Shalom Sisterhood Gift Shop or you may call Maxine Grossman at 913-338-2912.

## Carlebach Concert Is a Sound Sensation

Watch your mail for an invitation to an event you won't want to miss. Soul singer Neshama Carlebach, leading superstar in Jewish entertainment, will appear in concert at the White Theatre on March 8, at 7:00 p.m. The event will mark the 12th installment in the Isadore and Rachel Polsky Jewish Enrichment Series which brings innovative educational and artistic events to Congregation Beth Shalom and the Kansas City community.

Carlebach's father, the late Rabbi Shlomo Carlebach, filled every song he wrote

with his deep spirituality and love of all humanity. As a result, he touched every person he encountered, while changing the face of Jewish music. Like her father, Neshama's talent and charisma captivate and endear her to people of all ages and backgrounds as she performs and teaches in cities worldwide. "My father always said that when we sing, it's like we're praying twice. When I'm on stage, I experience prayer in the deepest sense," she said.

The Polsky Jewish Enrichment Series, a part of the Rabbi Morris B. Margolies Center for Adult Jewish Studies of Congregation Beth Shalom, is funded by the Isadore and Rachel Polsky Endowment/Beth Shalom Foundation, provided by Elaine Polsky, Karen Polsky Kent, Larry and Ellen Polsky and Steve Polsky.



## What is the Chesed Committee?

"Chesed" Acts of lovingkindness—reaching out to those in need. This committee of about 60 volunteers performs kind deeds for so many in our Beth Shalom community. They come with smiles and cheer. They visit congregants who are hospitalized and follow up with phone calls and cards. They also send trees in Israel certificates for newborn babies. Members need to inform the ritual office if a family member is hospitalized and if a visitor is welcome. We are here for each other. Keep communicating and caring. Contact Merna Siegler, committee chair at (816)942-3670 or [mernnsyl@everestkc.net](mailto:mernnsyl@everestkc.net) for more information or to volunteer.

*Chesed is  
Acts of Lovingkindness*



Journey's Students Celebrate Chanukah before winter break.

## Steppin' Out with Eleanor Roosevelt

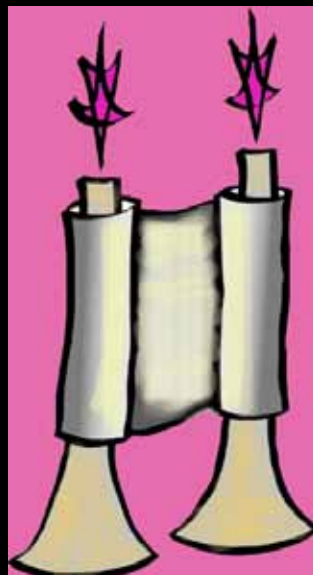


Mark your calendars for Sunday, Feb. 12, the next Steppin' Out program for members of Beth Shalom 60 and older.

The evening begins with a 6:00 pm dinner in Goldsmith Hall. Following dinner, Eleanor Roosevelt's life with Franklin D. Roosevelt will be portrayed by Marlene Katz, professional storyteller. This will be a compelling depiction.

Your reservation is a \$12 check made payable to Steppin' Out. Please mail payment and contact information, to CBS, Attn: Steppin' Out, 14200 Lamar, Overland Park, KS 66223. Reservations deadline is Feb. 3. Please contact Linda Lessner, 913-897-0122 or [llessner@kc.rr.com](mailto:llessner@kc.rr.com).

## Passover Torah Fund to Launch 2012 Campaign



The annual Passover Torah Fund luncheon will be held on Wednesday, April 11. Torah Fund supports The Jewish Theological Seminary (New York), The Ziegler School of Rabbinical Studies (Los Angeles), The Schechter Institute of Jewish Studies (Jerusalem) and Seminario Rabinico Latinoamericano (Buenos Aires). From these four schools come the Rabbis, Cantors and Jewish Educators that are the future leaders of Conservative Judaism. A letter will be sent to all Sisterhood members for the Torah Fund Campaign in early January. All donations received by March 19 will be listed in the Torah Fund Program.

*For questions please call Milisa Flekier (913)681-9298 or Berenice Haberman (913)894-6657, Torah Fund Co-Chairs.*

Congregational-Wide Events - See each department for their activities

Sunday	Monday	Tuesday	Wednesday	Thursday	Friday	Saturday
<b>1</b> 6 Tevet	<b>2</b> 7 Tevet	<b>3</b> 8 Tevet	<b>4</b> SH Executive Board Meeting 9:45 am 9 Tevet	<b>5</b> Warm Up America 10 am 10 Tevet	<b>6</b> 4:53 Shabbat 11 Tevet	<b>7</b> Davar Aher Service 12 Tevet 5:54 Havdalah
<b>8</b> 13 Tevet	<b>9</b> Board of Directors Meeting 7:30 pm 14 Tevet	<b>10</b> SH Peltzman Classes 10 am 15 Tevet	<b>11</b> SH Board Meeting 9:45 am 16 Tevet	<b>12</b> Eat & Educate 12 pm Downtown Mishnah 12 pm 17 Tevet	<b>13</b> 5:00 Shabbat 18 Tevet	<b>14</b> Birthday Shabbat Bat Mitzvah Abigail Wordsworth 19 Tevet 6:01 Havdalah
<b>15</b> 20 Tevet	<b>16</b> Martin Luther King Day Offices Closed 8:00 Shacharit 21 Tevet	<b>17</b> SH Peltzman Classes 10 am 22 Tevet	<b>18</b> SH Book Club 6:30 pm 23 Tevet	<b>19</b> Eat & Educate 12 pm 24 Tevet	<b>20</b> 5:08 Shabbat 25 Tevet	<b>21</b> Anniversary Shabbat Bar Mitzvah Joshua Eisemann 26 Tevet 6:09 Havdalah
<b>22</b> 27 Tevet	<b>23</b> 28 Tevet	<b>24</b> SH Peltzman Classes 10 am 29 Tevet	<b>25</b> PrayerWorks 10 am PRS No School 1 Shevat	<b>26</b> Eat & Educate 12 pm Adult Trope Classes 7:30 pm 2 Shevat	<b>27</b> 5:16 Shabbat 3 Shevat	<b>28</b> Bat Mitzvah Eliana Simon @ JCC 4 Shevat 6:17 Havdalah
<b>29</b> 5 Shevat	<b>30</b> 6 Shevat	<b>31</b> SH Peltzman Classes 10 am 7 Shevat	<b>1</b> Warm Up America 10 am 8 Shevat	<b>2</b> 9 Shevat	<b>3</b> Kaplan Weekend/ Sisterhood Services 6 pm Dinner 7 pm 5:24 Shabbat 10 Shevat	<b>4</b> Kaplan Weekend/ Sisterhood Shabbat 9:30 am 11 Shevat 6:25 Havdalah

## Candle Lighting Blessing

בְּרוּךְ אַתָּה ה' אֱלֹהֵינוּ מֶלֶךְ הָעוֹלָם אֲשֶׁר קִדְּשָׁנוּ בְּמִצְוֹתָיו וְצִוָּנוּ לְהַדְלִיק נֵר שַׁבָּת.

Barukh ata Adonai Eloheinu melekh ha'olam, asher kiddeshanu b'mitzvotav vetzivanu lehadlik ner shel Shabbat.

Shabbat Services and Sunday morning Shacharit will be held at the: Lamar Campus, 14200 Lamar  
Weekday Minyan will be held at: Appleman Synagogue, Village Shalom, 5500 W. 123rd St.

### Weekday Minyan

Minchah: Sunday-Thursday, 6pm  
Shacharit: Monday-Friday, 7am

### Time Change: Winter Holidays

Shacharit: Monday, Jan. 2, 8 am  
Monday, Jan. 16, 8 am

### Shabbat (check video monitor for room)

Kabbalat Shabbat: Friday, 6pm  
Main Service: Saturday 9:30 am  
Library Minyan: Saturday, 9:30 am  
Tots for Torah: Saturday, 9:30 am  
B'Yachad: Saturday, 10 am  
Minchah thru Feb 29 5:00 pm  
Shacharit: Sunday, 8:30 am

Happy  
2012





**Congregation Beth Shalom**  
 14200 Lamar • Overland Park, KS 66223  
[www.bethshalomkc.org](http://www.bethshalomkc.org)  
 Office: 913-647-7279 • Fax: 913-647-7277

## CONGREGATION Beth Shalom

**Alan L. Cohen, Rabbi**

**Morris B. Margolies, Ph.D.,**  
*Rabbi Emeritus*

**Robert Menes, Hazzan**

**Elaine Levine, Executive Director**

**Kurt Kavanaugh, D.D.S., President**

**Bev Newman, Scroll Editor**

**Martha Hoffman,**

*Scroll Design & Production*

The Congregation Beth Shalom Scroll (USPS531-420) is published monthly by Congregation Beth Shalom, 14200 Lamar Ave., Overland Park, KS 66223. Annual Subscription \$24.00. Periodical Postage Paid in Shawnee Mission, KS. DATED MATERIAL

POSTMASTER: Send address changes to CONGREGATION BETH SHALOM SCROLL, 14200 Lamar, Overland Park, KS 66223. Scroll Deadline: The 1st of the previous month. Submit articles to the Administrative office before the deadline.

***Congregation Beth Shalom, an egalitarian Conservative synagogue, is a welcoming community of individuals from diverse backgrounds, strengthening connections with God, Torah and the Jewish people through communal commitment to prayer, study and acts of loving kindness.***

### Looking Ahead:

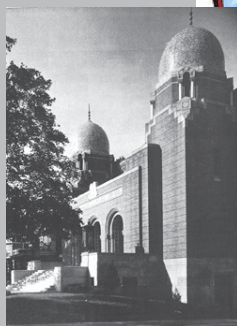
**Beth Shalom Parent Group Family Kabbalat Shabbat**  
**February 24**

**Confirmation Class Pancake Breakfast**  
**February 26**

**KCUSY Purim Carnival**  
**March 4**

**Megillah Reading**  
**March 7 and 8**

Order Mah Jongg  
 Cards before Jan. 21-  
 in the gift shop.



take the bus with us  
 through Jewish KC. See  
 where your parents or  
 grandparents  
 went to shul.

### Office Hours:

**Monday - Thursday**  
 8:30 am-5 pm  
**Friday** 8:30 am-3:30pm  
 Closed on Federal Holidays

### Mt. Carmel Cemetery Hours:

**Monday & Wednesday**  
 8 am-4 pm  
**Tuesday, Thursday** Closed  
**Saturday** Closed  
**Friday & Sunday** 8 am-4 pm  
**National Holidays** 9 am-4 pm  
*Exceptions:*  
 Day after New Year's Day & MLK Day  
**Jewish Holidays** Closed

### Sisterhood Gift Shop Hours

**Hours:**  
**Monday, Tuesday, Thursday:**  
 10 am-2:30 pm  
**Wednesday:** 10 am-6:30 pm  
**Friday:** 10 am-12 pm  
**Sunday:** 9:30 am-12:30 pm  
 Or, Call 913-647-7298 for appt.

## Schedule

### Kaplan Weekend/ Sisterhood Shabbat

**Friday, Feb. 3**  
**Goldsmith Hall**

**6:00 pm** Services  
**7:00 pm** Shabbat Dinner  
**8:15 pm** "Great Souls,  
 Great Prayers"  
 Rev. Robert Lee Hill

**Saturday, Feb. 4**  
**Goldsmith Hall**

**9:30 am** Services & Sermon  
 "The Conservative  
 Protestant View of Prayer"  
 Bishop Mark C. Tolbert  
**12:00 pm** Kiddush Luncheon  
 following Services

**Sunday, Feb. 5**  
**Goldsmith Hall**

**8:30 am** Shacharit Services  
**9:15 am** Breakfast & Speaker  
 "Jewish Kansas City"  
 K.C. Jewish Archives  
**10:00 am** Bus trip to  
 Victorious Life Church  
**10:45 am** Church Service