

## 2017 High Holiday Schedule

**\*All services will be held at the JCC Campus except for Tashlikh\***

### Erev Rosh HaShanah – Wednesday, September 20

6:30 pm White Theatre

### 1st day of Rosh HaShanah – Thursday, September 21

8:30 am Traditional Service White Theatre  
with Rabbi Glickman & Hazzan Ben-Yehuda

8:30 am K-2nd Grade Programming CDC Common Area

8:30 am 3rd-5th Grade Programming ASK Room

9:00 am Family Service, ages infant-Pre-K Chapel

9:30 am Social Hall Service Social Hall

10:00 am Social Hall D'var Torah Social Hall

10:15 am 3rd-5th Grade Service Chapel

11:00 am Traditional Service D'var Torah White Theater

11:15 am K-2nd Grade Service Chapel

4:00 pm \*Community Tashlikh Service

Park/Bridge behind Leawood City Hall  
4800 Town Center Drive Leawood, KS

6:00 pm Minchah/Ma'ariv Service Social Hall

Candle lighting will be after 8:00 pm

### 2nd day of Rosh HaShanah – Friday, September 22

8:30 am Traditional service White Theater

8:30 am K-5th Grade Programming ASK Room

9:00 am Family service – ages infant-Pre-K Chapel

10:30 am K-5th Grade Service Chapel

10:00 am Rimom Service Social Hall

with Rabbi Glickman & Hazzan Ben-Yehuda

11:30 am Traditional Service D'var Torah White Theatre

6:00 pm Minchah/Erev Shabbat Services Social Hall

### Shabbat Saturday – September 23

9:30 am Shabbat Services Social Hall

9:30 am Library Minyan Chapel (2nd floor)

6:56 pm Minchah/Ma'ariv/Havdalah Social Hall

### Erev Yom Kippur – Friday, September 29

6:30 pm Minchah/Kol Nidre/Kabbalat Shabbat White Theater

*Please plan on arriving early to ensure timely seating.*

### Yom Kippur – Saturday, September 30

8:30 am Traditional Service White Theatre

with Rabbi Glickman & Hazzan Ben-Yehuda

8:30 am K-2nd grade programming CDC Common Area

8:30 am 3rd-5th Grade Programming ASK Room

9:00 am Family Service, ages infant-Pre-K Chapel

9:30 am Social Hall Service Social Hall

10:00 am D'var Torah & Yizkor service Social Hall

10:15 am 3rd-5th Grade Service Chapel

11:00 am D'var Torah & Yizkor Service White Theatre

Yom Kippur Afternoon Learning Sessions TBD

11:15 am K-2nd Grade Service Chapel

4:35 pm Minchah/Ne'ilah/Ma'ariv White Theater

7:35 pm Sounding of the Shofar & Havdalah White Theater

*\*Please Note: Youth & Childcare Programming will conclude 10 minutes following the end of adult services.*

*If your child will be staying past noon, please send a kosher dairy lunch.\**

## High Holiday Appeal 2017

We need everyone to support the 2017 High Holiday Appeal! The annual appeal is a vital part of our financial plan and is crucial to maintaining our present level of programming and the support services CBS provides. We ask everyone to give based on their financial ability. By giving to the appeal, you are performing a mitzvah, and you are investing in your congregation. If you have not previously given, please make a pledge this year. If you gave last year, consider increasing your contribution to help offset the impact of inflation on our budget.

Donations may be made in one of the following ways:

- 1) Send in the bottom portion of the High Holiday Appeal letter that will be mailed to you soon.
- 2) Donate online at [www.bethshalomkc.org](http://www.bethshalomkc.org).
- 3) Place a sticker on your High Holiday ticket indicating your pledge and give it to one of our designated "Appeal Collectors" during Yom Kippur services.

Thank you in advance for supporting the 2017 High Holiday Appeal. For more information or questions, contact Ernie or Susan Rosenthal, High Holiday Appeal Chairs, at [ErnieRos@yahoo.com](mailto:ErnieRos@yahoo.com) or 913-491-8924.



## 2017 Security & Parking

Each year, we must be diligent with our security procedures to ensure a safe environment for our congregants. There will be a very obvious police presence at the JCC during all services. There will be no admission without a ticket. If you do not carry



during the holidays, please check in at the door with one of our staff who will have a list of everyone who has been mailed

## 2017 Ticket Policy

- All members in good standing will receive tickets by mail. Your children under age 25 are free and do not require a ticket when attending services with you.
- Guest tickets are available on-line at \$175 each and will be mailed to either you or your guest, whichever you indicate.
- If your account is in arrears, please contact our bookkeeper, Pam Fite at

913-647-7271 to arrange a payment plan. If this is not feasible, please contact Bernie Fried at 913-647-7293. It is our mission for all congregants to be able to attend services irrespective of their financial situation as long as you contact Bernie before the holidays.

- Reciprocal Guest Tickets are available for those belonging to another Conservative Synagogue. Their home

High Holiday tickets.

The JCC is closed for all other activities on the High Holidays, and all available parking spaces, with the exception of the area reserved for Pillar parking, may be used. The Sprint garages may not be used.

synagogue must order the tickets for them. Guest ticket requests should be sent to Maggie Hultman at [maggieh@bethshalomkc.org](mailto:maggieh@bethshalomkc.org).

- For those who are not members, we have free Rimmon tickets to attend this service and free young family service tickets. Family services begin at 9:00 am and tickets must be picked up at the front desk of the Pre-School prior to the holidays.

## Congregational Calendar Available at Rosh HaShanah Services

The 2017-18 congregational calendar/directory, a project of our Sisterhood, will be distributed on the first day of Rosh HaShanah, Thursday, September 21, outside both the White Theater and the Social Hall at the JCC as you leave services. **Please redeem your calen-**

**dar with the special calendar ticket included with your services tickets.**



If you are unable to pick up your calendar at this time, it will be mailed between the end of Rosh HaShanah and Yom Kippur. Sisterhood thanks you for helping save on mailing costs.

## High Holiday Honors for 5778 (2017)

If you would like to receive an honor for Rosh HaShanah or Yom Kippur, there are two ways to accomplish this. Please read carefully:

Plan 1- Congregants are welcome to log on to our website at <http://bethshalomkc.org/2-ritual/hh-high-holiday-honors/> and fill out the form requesting an honor.

An email will be mailed to you confirming your request.

Plan 2- Officers, board members and other volunteers will be calling congregants who celebrated a special

occasion in the past year such as a 50th wedding anniversary, a Bar or Bat Mitzvah or a special birthday. They will be offering those celebrants an aliyah in honor of those occasions. If you celebrated a special simcha and do not want to wait for a call, feel free to contact Jill at [jgoldstein@bethshalomkc.org](mailto:jgoldstein@bethshalomkc.org) or go to Plan 1.

Honors include Torah aliyot, ark openings/closings, English readings and carrying the Torah in either the processional or recessional. Questions, contact Jill at the above email address.

## Mt. Carmel Memorial Service

Our annual Mt. Carmel Cemetery High Holiday Memorial Service will be held Sunday, September 24, at 1:00 pm in the Yukon Chapel.

There will be time for visiting the graves of our loved ones following the service, and our caretakers, Jim and



Bob, will be available to direct you to the gravesites you may wish to visit. Our tradition teaches us about the merit of praying by the graves of our loved ones, and we honor the beautiful custom of coming together for prayer, reflection and grave visitation during the High Holiday season.

For further information, contact Trinity at 913-647-7281.

## Selichot Helps Prepare Us for the High Holidays

The community-wide Selichot program and service will take place on Saturday night, September 16, at Congregation Beth Torah. The evening will begin with a dessert reception at 8:00 pm followed by Havdalah at 8:45 pm. A creative, interactive performance of “The Sarah Play” produced by Jon Adam Ross-JAR, a playwright and performer, will be presented at 9:00 pm. The play is part of the InHeiritage Project which explores modern interpretations of

Judaism’s patriarchs and matriarchs. This presentation is brought to Kansas City by the J’s Midwest Jewish Artists Laboratory.

The Selichot service will start at 10:10 pm and is designed to help worshippers begin to spiritually prepare for Rosh HaShanah and Yom Kippur by examining one’s deeds of the past year and directing one’s heart and mind to the process of *teshuvah* (repentance) and seeking forgiveness. The service will be led by area clergy

and musicians. Services will also be held at Kehilath Israel at 11:00 pm and at Beth Israel Abraham and Voliner at 1:10 am.

For more information, visit [www.kcrabbis.org](http://www.kcrabbis.org) or contact Annette Fish, Rabbinical Association Administrator, [afprogram@aol.com](mailto:afprogram@aol.com) or 913-327-4622. The Rabbinical association of greater Kansas City sponsors the Selichot program with generous support from the Jewish Federation of Greater Kansas City.

## Young Family Services



Linda Salvay will be leading the young family services once again for the High Holidays. The services will be in the chapel upstairs at the campus from 9:00 to 9:45am both days of Rosh Hashanah as well as Yom Kippur. Please call

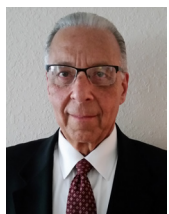
the preschool office with any questions, 913-647-7285.

Linda Salvay discovered her love of Jewish music as a teen at Camp Herzl and in USY. She has performed as both a soloist and as a member of musical groups Shir Ami in St. Louis, and the Chai Singers and Yachad—The Traveling Tefillah Band

in Kansas City. Her original compositions include a rendition of “Ani Ma-Amin” that was chosen from entries worldwide for inclusion in the eighth annual Chasidic Song Festival in Israel. Among her current musical endeavors, she enjoys Shabbat singing each week with preschoolers in the RFECEC.

# Executively Speaking

## Tomorrow Never Comes



Today is the tomorrow we worried about yesterday. We can remember yesterday; we can live for today. But, tomorrow is always beyond our reach. Never have I woken up and said: “It’s tomorrow”. Tomorrow never comes.

We have made so much progress over the past year, and as I begin a new two-year term as your Executive Director, I look forward to working with you to accomplish so much more. But nothing can be accomplished by putting it off until tomorrow.

We can set our goals for tomorrow, but we must begin our quest today.

We are so fortunate to have outstanding clergy in Rabbi Glickman and Hazzan Ben-Yehuda. They, coupled with our dedicated and talented staff, have made major contributions to enhancing our ritual, educational and operational needs.

But, there is so much more to be done. It is imperative that we continue to upgrade and enhance our security requirements to ensure the safety and security of our children, congregants and guests. We also need

to upgrade our network hardware and software to minimize chances of computer viruses and malware being introduced into our network, which could potentially cause a loss of data and expensive fixes.

In addition, I am hoping to upgrade our website to make it more user friendly and inviting for our congregants, potential members and donors.

Our work is never finished. We cannot wait until tomorrow to begin critical or on-going projects. There is no tomorrow. We must begin today.

**Bernie Fried**  
Executive Director



# From the Rabbi's Study

## A Universalist's Defense of Judaism's Particularism



*The Genius of Judaism* by Bernard-Henri Lévy is an unusual book. It is not clearly philosophy, history nor autobiography. In some ways, it is a bit of all three, and in some ways it is none of the above. I "read" this book half on a Kindle and half through its narrated audio book which is available on Audible.com. In some ways, I found the audiobook better, because it feels like a stream-of-consciousness monologue, and there were parts that were absolutely inspiring and made me examine Jewish identity in new ways. It had the emotional ring of hearing a really great speaker - or that favorite charismatic professor in college.

The first half of the book examines Judaism's unique features as a faith/religion/nation/people, and traces its uniqueness through history (with a welcome focus on French Jewish history). The second half is a long metaphorical analysis of the Biblical Book of Jonah, examining how Judaism's prophetic voice has encountered the various great societies. This sprawling exploration of Jonah, as a self-contained unit, would make excellent reading on Yom Kippur afternoon.

The biggest criticism, though, is the lack of focus. The same quality that makes sections a good listen on Audible.com, also makes it a totally

unwieldy book to read. It is less a book than it is numerous good thirty page essays in search of a decent editor. Alas, the author's formidable ego has trouble getting in its own way.

I was not familiar with Lévy before this book and had to do some internet research on his work to appreciate the significance of *The Genius of Judaism*. The author is a journalist, public thought leader and *bon vivant*. He has covered some of the most dangerous war zones of the second half of the twentieth century, and his presence at so many political revolutions informs his own love of Judaism. If you are not *au courant* in philosophy, journalism, history and film studies - you may want to read this book with a thesaurus and Wikipedia handy.

*The Genius of Judaism* is the work of a passionate advocate, admirer and autodidact. His inspiration is the great French-Jewish philosopher, Emmanuel Levinas. Though the book is hampered by the author's penchant for tangents, name dropping and the intellectual cul-de-sacs, Lévy's voice is also needed right now.

We have seen a resurgence of anti-Semitism on the Left and the Right. The American Jewish community is familiar with how to combat the anti-Semitism of organizations of the alt-right because it is reminiscent of Nazism and the KKK. We

have a harder time combatting the anti-Semitic language that has been coming from the left on campuses and in intellectual life. The places in universities where many Jews have felt at home are now hostile to Judaism and exclusionary of Zionism. Lévy is a dyed in the wool leftist who makes a compelling argument for why Judaism's uniqueness and focus in particularism actually forms individuals who can be more accepting of others and fighters against injustice. Lévy attacks all the different forms of Holocaust denial, and demonstrates how it was those who knew the Holocaust either first-hand or through study were the strongest voices against the later genocides of Cambodia and Darfur. He decimates the hierarchy of suffering that we see the intelligentsia squabble about, and shows how understanding your own history trains one to be more compassionate towards the suffering of others. It is a French, universalistic, leftist intellectual who can most effectively make the case for the uniqueness of Judaism, the case for deep study of our sacred texts and learning our own history.

*David M. Glickman*

Rabbi David M. Glickman  
dglickman@bethshalomkc.org

## Parashat HaShavua

Parashat HaShavua is an ongoing, monthly program taking place every third Shabbat of the month at 9:00 am in the conference room. The goal of this program is to engage its participants in a stimulating discussion of

the weekly torah portion in a friendly atmosphere, where the difference of opinions is respected and questions are encouraged.

The next session will take place on August 15, when Parashat *Re'eh* will be discussed. An informal atmosphere

and deep level of discussion are the trademarks of this gathering. No prior experience is required, and everybody is welcome to join.

For more information, contact Svetlana Sorkin at 913-393-1715 or [saraliorasedu@hotmail.com](mailto:saraliorasedu@hotmail.com).

# Polsky Religious School

Hazzan Tahl Ben-Yehuda, Director of Congregational Learning | [hazzantby@bethshalomkc.org](mailto:hazzantby@bethshalomkc.org)

## Jewish Education for All Our Members



One of the core values of CBS is Jewish Learning. As the Director of Congregational Learning, I have been responsible for the vision and administration of our synagogue's religious school. The past three years have seen exciting changes in our school; the Hebrew Lab brings 5th through 7th grade students together to learn to read and chant Hebrew in a fun, dynamic setting where each child progresses at his or her best pace. Tablet technology now enhances our curriculum thanks to a generous gift last year, and the Polsky Family

Foundation Grant has enabled us to build community through Shabbat and holiday meals where Jewish ritual is not just learned, but practiced and shared. In the coming year students, the Polsky grant sent to Songleader Bootcamp, will begin to work in our school, teaching songs and prayers to the youngest students.

Jewish Learning is a critical element of the Jewish experience not only for our children but for all our members. To that end, this year I will be offering at least two learning opportunities to our membership. First, there will be a Gabbai training class that will meet for two Sunday evenings in the

late Fall. This class will be a refresher for all current Gabbayim and a class to teach anyone who wishes to become a Gabbai the ins and outs of how to take on this Shabbat morning responsibility and honor. Second, there will be a class to teach how to chant Torah and/or Haftarah in the early spring. If you have ever wanted to chant Torah, or if you already know how to chant Torah but never learned how to chant Haftarah, this is the class for you.

I am looking forward to learning with you in the weeks, months and years to come!

## Mark Your Calendars

August 20	PRS Open House at 1:00 pm
August 23	Hebrew Jump Start 3rd-7th 4:15-5:30 pm
August 27	Day of Discovery (an exciting interactive community program for school children)
August 30	Hebrew Jump Start 3rd-7th 4:15-5:30 pm

## Religious School Open House

The Polsky Religious School will host an Open House in Library Reading area on Sunday, August 20, at 1:00 pm. Parents and students are invited to join us, hear about the

coming year from Hazzan Ben-Yehuda and meet our teachers. In addition, each teacher will be available to answer questions, provide an overview of his/her year's curriculum and hand out supply lists. While parents are vis-

iting with staff, students will have an opportunity to work at a craft table to begin making sukkah decorations. The afternoon will end with a light snack. For more information, contact the school office at 913-647-7286.

## B'nei Mitzvah Parents' Meeting

Parents of B'nei Mitzvah students with dates from August, 2018 through June, 2019 as well as parents of students entering 6th grade, are invited to attend a B'nei Mitzvah Seminar at 7:00 pm, Sunday evening, August 13, in the Conference Room.

Information regarding 6th grade programming, B'nei Mitzvah requirements, tutoring, use of facilities and financial obligations will be discussed. In addition, Bar/Bat Mitzvah binders will be distributed. Staff members from various areas of the congregation

will be present to answer questions regarding the preparation for your child's upcoming simcha.

Please contact Jill Goldstein, Ritual/Religious School Coordinator, at 913-647-7286 for further information or to make your reservation for the meeting.

## Mazal Tov to...



**Vicki and Michael Diamond** announce the engagement of their daughter Emily Diamond to Isaac Goldman. Isaac's parents are BJ and Simon Goldman.



# Sisterhood

Carol Yarmo, President | [shpres@bethshalomkc.org](mailto:shpres@bethshalomkc.org) |

## PrayerWorks Celebrates Its 20th Anniversary

PrayerWorks will celebrate its 20th anniversary at a PrayerWorks Shabbat on August 26, at CBS. Services begin at 9:30 am. Nata Scharf is chair of the event.

Spirituality in Judaism has been around for thousands of years. Recitation of psalms and prayers on behalf of the sick are part of the Jewish faith. There are groups that offer prayers for the sick throughout the world. Our Sisterhood offers such a group called "PrayerWorks". The group meets once a month from 10:00 - 11:30 am at CBS, on the fourth Wednesday of the month throughout the year and is open to the community. Some months the sessions are held at Village Shalom. PrayerWorks has been used as a model for other groups throughout the country.

The group is composed of dedicated and committed women and men who believe in the power of collective prayer for those in need of physical, emotional or spiritual healing. Relaxation, meditation and prayer are used during



the session.

PrayerWorks began November 1997 with input from Rabbi Alan Cohen and Rabbi Morris Margolies, z"l. Six founding members remain active; Judy Bell, Anne Bratt, Gertie Epstein, Joan March, Janet Price, and Rickie Haith, facilitator

and chairman.

PrayerWorks has received several awards, including one from International Women's League for Conservative Judaism. Haith has led a Healing Service at an International Women's League Convention and has conducted Healing Services throughout the country.

For information or to leave a name of someone in need of physical, spiritual, or emotional healing, call 913-341-8707, Rickie Haith, facilitator & chairman. All names are left on the prayer list a minimum of 3 months unless notified. A PrayerWorks at Home cassette or CD and a PrayerWorks booklet are available at no charge.

## Chayei Olam Torah Fund Campaign



The annual Chayei Olam Torah Fund Campaign begins this month. The levels of giving are Chayei Olam (\$180), Guardian (\$300),

Associate Patron (\$600) and Patron (\$1,200). Women's League's gift to all who donate at the \$180 level or above is a beautiful silver and gold pin/pendant featuring the number 100

in raised silver numerals celebrating the 100th year of the Women's League for Conservative Judaism. The inscription in gold is Mah Tov from Numbers 24:5 which is sung when we enter the synagogue. The theme of Mah Tov is an expression of our appreciation for being able to come together to worship as a community.

For 75 years the Torah Fund has helped to support the students at the Jewish Theological Seminary, Ziegler School of Rabbinic Studies, Schechter

Institute of Jewish Studies, Seminario Rabbinico Latino-Americano and Zacharias Frankel College. Let's work together to make sure, through our donations, that these universities can continue to educate our future Jewish Conservative clergy, scholars, educators and leaders.

For more information, contact Berenice Haberman, [bshaberman521@gmail.com](mailto:bshaberman521@gmail.com), 913-940-4911 or Rhea Salasche, [rheasher@aol.com](mailto:rheasher@aol.com), or 913-859-0530.

## New and Prospective Sisterhood Member Event

New and prospective Sisterhood members mark your calendars for a creative bash at Paint, Glaze and Fire Ceramics and Coffee House in Overland Park, on Tuesday, August 22 from 6:00-8:00 pm. Wine and hors d'oeuvres will be served. Studio

fee is \$4 plus the cost of any item you choose to paint. There are many Judaic or other items under \$20.

**If you bring a used cell phone to donate to charity, you will receive a 25% discount on one item.**

**Pay your Sisterhood dues of \$36**

**for 2017-18 at the event, and your name will be placed in a drawing at the end of the evening for a prize.**

Watch for your invitation! Space is limited. Please RSVP by Monday, August 14 to Wendy Malyn at 816-582-4734 or [wmalyn@everestkc.net](mailto:wmalyn@everestkc.net).



# Sisterhood

Carol Yarmo, President | [shpres@bethshalomkc.org](mailto:shpres@bethshalomkc.org) |

## Sisterhood Presents: Change is a Part of Life



Sisterhood's annual Fall luncheon welcoming all members to a new year of exciting programs will be held on September 12, at 11:30 am in Goldsmith Hall. The cost for the luncheon will be \$15 for members and \$20 for guests.

Debra Orbuch Grayson, a Licensed Clinical & Family Therapist, will be our dynamic guest speaker. Debra will facilitate an interactive discussion about life changes and how we adapt to them. We all face change no matter what our age is, and attitude and coping skills play important roles in adapting to change. To quote Heraclitus, a Greek Philosopher, "The only thing that is constant is change".

Debra and her family moved here about a year ago and are new members of CBS. She has been in practice for over 30 years and holds a BS degree from the University of Wisconsin, Madison and an MS from the University of Maryland College Park.

Invitations will be coming soon. Attendees are requested to bring sample or new personal care items and cosmetic bags to be used for holiday gifts for clients of Jewish Family Services.

For more information, please contact Wendy Malyn 816-582-4734, [wmalyn@everestkc.net](mailto:wmalyn@everestkc.net) or Ellen Soltz 913-766-0274, [ellensoltz@gmail.com](mailto:ellensoltz@gmail.com). This event has been partially subsidized by the Snitz Sisters Memorial Fund.

## Sisterhood Gift Shop

Mary Weiner | [913-647-7298](tel:913-647-7298) |

As we start to get our TO DO LIST together for Fall - add Beth Shalom Sisterhood Gift Shop to your list.

We have unique Judaica items for the High Holidays: Rosh Hashanah honey containers, apple platters, challah trays, "hostess gifts" to name a few items.

Support OUR Gift Shop and visit with our knowledgeable staff for more ideas!



### Instructions:

Preheat Oven to 425°F. Line a rimmed baking sheet with parchment paper. Place salmon skin-side down, brush with olive oil and season with garlic salt and black pepper (to taste). Bake uncovered for 10-15 min or just until cooked through. Remove from oven, cover with foil and rest ten minutes. Discard skin, flake salmon with fork, remove any bones, and cool to room temp.

Heat a medium sized skillet over medium heat. Add 1 Tbsp olive oil, 1 Tbsp butter and finely diced onion and bell pepper.

### Ingredients

- 1 lb fresh salmon filet\*
- Garlic Salt
- Black Pepper
- Olive Oil
- 1 medium onion (1 cup finely diced)
- ½ red bell pepper, diced
- 3 Tbsp unsalted butter, divided
- 1 cup Panko bread crumbs (Japanese Style crumbs)
- 2 large eggs, lightly beaten
- 3 Tbsp mayo
- 1 tsp Worcestershire sauce
- ¼ cup minced fresh parsley



### Salmon Cakes (Patties)

Saute until softened and golden (7-9 minutes) then remove from heat.

In a large mixing bowl, combine cooled flaked salmon, sautéed onion and pepper, 1 cup bread crumbs, 2 beaten eggs, 3 Tbsp mayo, 1 tsp Worcestershire sauce, 1 tsp garlic salt, ¼ tsp black pepper, and ¼ cup fresh parsley. Stir to combine and then form into 13-14 1/3 to ½ inch patties.

Heat 1 Tbsp oil and 1 Tbsp butter in a large pan over medium heat and once butter is done sizzling, add half of the salmon cakes and sauté 3½ to 4 min per side or until golden brown and cooked through. If salmon cakes brown too quickly, reduce heat. Remove to a paper-towel lined plate. Add remaining 1 Tbsp oil and 1 Tbsp butter and repeat cooking remaining salmon cakes.

\*Note: Fresh salmon is best, but it can be substituted with leftover cooked salmon or 14-15 oz of well-drained canned salmon. If mixture is too moist to hold the patty shape, add more bread crumbs and if it is too dry, add an extra tablespoon of mayo.

## Of Blessed Memory

We express condolences to our Beth Shalom Members, their Families and Friends.

*Edith Markowitz, z"l, July 8 - 14 Tammuz*

*Elizabeth Bohm, z"l, July 15 - 21 Tammuz*

*Morton Hurst, z"l, July 15 - 21 Tammuz*

*Donald Kopin, z"l, July 20 - 26 Tammuz*

## Unveilings On September 3

**Debby Cortés**

September 3 at 10:30 am  
at Rose Hill Cemetery

**Miriam Schwartz**

September 3 at 11:00 am  
at Mt Carmel Cemetery

**Goldie Riss**

September 3 at 12:00 pm  
at Mt Carmel Cemetery

## Plaques Have Been Dedicated In Memory Of...

### Yahrtzeits

Join us for morning or evening minyan to say Kaddish for your loved one. See service schedule, page 11.

#### 9 Av - Aug. 1

Alvin Arenson  
Allan Birman  
Betty Birman  
Bessie Bordman  
Mary Chernikoff  
Mordecai Crosner  
Rosa Crosner  
Barbara Enslein  
Rebecca R. Furman  
Bessie Goldberg  
Jennie Himmel  
Anna Hoffman  
Henshen Keller  
David Leibtag  
Emma Loeffler  
Siegfried Loeffler  
William Peltzman  
Mitchel Rose  
Anna Tempofsky  
Pauline Yaskolka

#### 10 Av - Aug. 2

Melvin E. Beyer  
Sarah Golding  
Neil F. Miller  
Jennie Millman  
Mendel Oshry  
Clara Rothblatt  
Esther Shapiro

#### 11 Av - Aug. 3

Alfred Aron  
Morris Balot  
Ida Baron  
Barney Cinnamon  
Abraham Cohen  
Sophia Cohn  
Rae Dloogoff  
Jacob Goldstein  
Ida Z. Joseph  
Richard L. Josephson  
Louis Kiansky  
Esther Lesser  
Charlotte S. Margolin  
Meyer Peltzman  
Sarah Scrinopskie  
Ethel Seider  
Charlotte M. Shafon  
Philip Wang

#### 12 Av - Aug. 4

Toby Chemel  
Ida Frank  
Dorothy Glass  
Dora Gold  
Nathan S. Goldberg  
Serena Hammer  
Anna Horowitz

Samuel Isaak  
Phillip Katz  
Hyman J. Levi  
Hyman Rosen  
Ben Solomon

#### 13 Av - Aug. 5

Rebecca Barash  
Bessie Brenner  
Samuel J. Brown  
Sigmund Dollman  
Rose Gould  
Jack Kahn  
Harry Levy  
Jennie Marks  
Isaac Sackin  
Harris Segelbohm  
Samuel Spector  
Ruth Unger  
Evelyn Yodler

#### 14 Av - Aug. 6

Norma Bush  
Abraham Dorfman  
Rebecca Greenstein  
Abe J. Kaplan  
Minnie Rafael  
Kreine Shankman  
Henry Sosland

#### 15 Av - Aug. 7

Robert R. Bernstein  
Sarah T. Freshman  
Samuel L. Greenberg  
Rose Hyman  
Benjamin Katz  
Frieda Shanberg  
David Steinberg  
Sadie Tonopolsky

#### 16 Av - Aug. 8

Annette Glaser  
Sigmund Gundle  
Freida Mendell  
Abraham Sidley  
Benjamin Silverman  
Roni Smith  
Louis J. Weintraub

#### 17 Av - Aug. 9

Rebecca Berman  
Ethel H. Cohn  
Abe Eisen  
Louis H. Forman  
Jacob Jagoda  
Bess Merse  
Lena Morris  
Rubin Moskovitz  
Joel Polsky  
Lewis L. Sofnas

Sarah Wang

#### 18 Av - Aug. 10

Daniel Aranoff  
Pola Baum  
Marie Bell  
Aaron Bloustine  
Hyman Brand  
Sylvia Bromberg  
Benjamin Gastman  
Kathleen Gelpman  
Peltzman  
Lillie Lefkovits  
Gladys L. Normand  
Sidney Osur  
Jacob J. Taxman  
Sarah Waxenberg  
Alex A. Wedlansky  
Aaron Ziman

#### 19 Av - Aug. 11

Samuel Baum  
Norma Cinnamon  
Maurice M. Dubinsky  
Ruth Milgram Eisberg  
Meyer Gordon  
Anna Halle  
Jack Kay  
Rachel Levinson  
Ruthye Nowick  
Sarah I. Rose

#### 20 Av - Aug. 12

Bernadine Benjamin  
Donna J. Cohen  
Frank M. Coleman  
Esther P. Dubinsky  
Esther Duni  
Bess Ginsberg  
Essie Goodman  
Max Hecht  
Joseph Klein  
Sam Lustig  
Simon Navran  
Sam Pasmanik  
Sarah M. Schere  
Abe Schuman  
Goldy Siegel

#### 21 Av - Aug. 13

Pesyl Brand  
I.J. Cohen  
Mollie Dashiell  
Jack Denowitz  
Anna B. Godock  
Edith Goldstein  
Reuben Kantor  
Jacob Levinson  
Sarah Siegel

#### 22 Av - Aug. 14

Charles Bass  
Louis Donovitz  
Robert H. Fichman  
Jacob Max  
Maurice Loeffler  
Esther Millstein  
Clara Ommerman-  
Gilgus  
Harriet Schoket  
Samuel Sukon  
Rosa Witschner

#### 23 Av - Aug. 15

Richard Biederman  
Sherman Cohen  
Ed S. Michelson  
Alana Morris  
Louis Pinsky  
Harry Robinson  
Sam Rosen  
Morris M. Ruback  
Jacob Rubin  
Joseph Schlosberg  
Hortense Stern

#### 24 Av - Aug. 16

Frances Franks  
Libbie Goldberg  
Reuben Josephson  
Max Lerer  
Rena A. Rosenberg  
Philip Rosenblatt  
Abraham L. Snyder  
Hymie J. Sosland  
John Spitaufsky  
Gedaliah Vigder

#### 25 Av - Aug. 17

Yoheved Flekier  
Max Gluck  
Emilie Isaak  
Philip L. Levi  
Emanuel Reichman  
Frances Sandler  
Samuel S. Shapiro  
Marilyn Wasserman  
Allen S. Yukon

#### 26 Av - Aug. 18

Edith Bell  
Nathan Peltzman  
Abe Sander

#### 27 Av - Aug. 19

Ida Cohen  
Samuel Cohen  
Nathan Dreiseszun  
Abraham S. Goodman  
Louis Grace

Louis H. Karosen  
Joe Lipsky  
Beatrice B. Wilk  
Anna Winett

#### 28 Av - Aug. 20

Etta Bayzman  
Philip J. Cohen  
Fannie Friedman  
Rebecca Glassman  
Moishe I. Kamar  
Paulina Muller  
Fanny Shlemovitz

#### 29 Av - Aug. 21

George Deiboch  
Harry Dubinsky  
Ben Goldstein  
Israel C. Kamber  
Ada Karosen  
Rebecca Lieberman  
Abe Markus  
Abe Radetsky  
Pro Sherman  
Charles S. Smith  
Mollie Spector  
Samuel Summers

#### 30 Av - Aug. 22

Reline Eisemann  
Anna Greenberg  
Sam Horwitz  
Theodore Kort  
Jake Lazarus  
Philip Lieberman  
Joe Posner  
Stanley D. Rostov  
William Schoen  
Sol Segal  
Celia Spicer  
Harry Teiblum

#### 1 Elul - Aug. 23

Louis Blond  
Rose B. Denowitz  
Fred Einhorn  
Fannie Fish  
Kenneth Fox  
Albert Garfinkel  
Jack Gersh  
Tiby Gilbert  
Esther Gilgus  
A. Jacobson  
Henrietta Katzman  
Jacob Langner  
Eva Laman  
Goldie Riss  
Israel Rocher  
Jacob Tulchinsky

Sharon H. Weinstein  
Brian R. Yodler

#### 2 Elul - Aug. 24

Bess G. Byers  
Edward Cohn  
Reubin Katz  
Rose Kaufman  
Ellis Kraft  
Meyer Minkin  
Lottie Nodiff Leavitt  
Jean T. Parmet  
Morris Sanell  
Josef Segelbohm  
Samuel I. Simon  
Anna Wedlan

#### 3 Elul - Aug. 25

Joseph Brenner  
Charlotte Chernikoff  
Serena Eisman  
Serena E. Grinpas  
Jack Klein  
Jack Lesser  
Sonia Mendelsohn  
Elk Peltzman  
Louis Rosenblatt  
Harry Abe Rosenblum

#### 4 Elul - Aug. 26

Myrl Cohen  
Sam Cohen  
Bessie Eichenberg  
Beatrice Fogel  
Abraham Goldberg  
Slava Goldberg  
Menia Levitch  
Adolph Lipsey  
Rosa Rosenblum  
Ida Stein  
Lena Stein  
Ernest Wasserstrom

#### 5 Elul - Aug. 27

Louis Adreme  
Harry Dean  
Ruth L. Katz  
Israel Raskin  
Sam Rosenberg  
Morris Stern  
Paul Vigder

#### 6 Elul - Aug. 28

Rebecca Agron  
Harry Byer  
Sam Fishman  
Rachel L. Hyman  
Felix Jarus  
Max Mindell  
Simon E. Rothenberg

Nathan Samuels  
Sarah Z. Sandhaus  
Hyman Schere  
Eva Schwartz  
Eva E. Weintraub  
Sarah B. White

#### 7 Elul - Aug. 29

Mordechai Berenbom  
H. Deacon Cohen  
Irving A. Cohen  
Bernard Copeland  
Sam Davis  
Ida Gershon  
Marian B. Gibbs  
Kate Goldman  
Jeanette K. Hoffman  
Anna Jacobs  
Minnie V. Katz  
Fannie Kaufman  
Ida Kaufman  
Sarah Labowitz  
Elaine Lewin  
Abe Walters  
Toby E. Weiss

#### 8 Elul - Aug. 30

Hanna F. Achtenberg  
Anna Dantzig  
Esther Goldstein  
Rae G. Jacobs  
Esther Z. Kaplan  
Sally Klutz  
Samuel Levine  
Leonard Levinson  
Balfour A. Lieber  
Ben Millstein  
Morris Minkin  
Irving Nasaw  
Sophie Samuels

#### 9 Elul - Aug. 31

Ena Bush  
Jordan Cohen  
Gloria Cohn  
Ronah W. Epstein  
Morris Z. Goldblatt  
Arthur Karbank  
Bessie Kupperstein  
Fanny Noah  
Bennett B. Shapiro  
Kip J. Weiner



## Ada Hoffman Camp Ramah Scholarship Fund

*In Memory of*  
**Howard Levitan**  
Kurt & Stephanie  
Kavanaugh

## Ann & Isadore Gale Scholarship Fund

*In Memory of*  
**Rita Galiskaya**  
Roman & Svetlana  
Sorkin

## Benjamin Ryweck Torah Fund

*In Honor of*  
**Hazzan Tahl**  
**Ben-Yehuda's**  
**Birthday**  
**Abby Sosnow's**  
**Bat Mitzvah**  
Joan March  
*In Memory of*  
**Howard Levitan**  
**Abe Meth**  
Joan March  
**Joel Vile**  
Anne Bratt  
Joan March  
**David Wallk**  
Anne Bratt

## Beth Shalom General Fund

*In Appreciation of*  
**Judy Jacks Berman**  
**& RFECEC Staff**  
Vlada Binshtok  
*In Honor of*  
**Berenice Haberman's**  
**Birthday**  
Merle Cole  
**Joel Pelofsky's**  
**80th Birthday**  
Richard & Barbara  
Atlas  
Bernie & Ella Ullman  
**Marvin Szneler's**  
**Birthday**  
Howard & Cherice  
Gerson  
*In Memory of*  
**Max Bergmann**  
Albert Bamberger  
**Elizabeth Bohm**  
Elliott & Kathy  
Hollub  
Dora Friszman  
Alisha Scott  
**Bess Gale**  
Carl Gale  
**Morton Hurst**  
Gertie Millstein  
Steven & Sherri  
Newstead

**Dorothea Jagoda**  
I.I. Ozar  
**Sol Kopitnik**  
Shirley Malashock  
**Arlene Levine**  
Sam & Danielle  
Levine  
**Fannie Mae Marder**  
Henry Marder  
**Lina Neustein**  
Frieda Soble  
**Bev Newman's Aunt**  
**Barry Spector**  
Berenice & Roger  
Haberman  
**Sidney F. Pakula, MD**  
Lawrence Pakula  
**Harry Jacob Prebluda**  
Jonathan & Ellen  
Chilton  
**Golda Rosen**  
Nathan Rosen  
**Inge B. Silverman**  
Craig & Amy Both  
**Robert Tonkens**  
Ross Tonkens  
**Joel Vile**  
Richard & Barbara  
Atlas  
Blossom Block  
& Phil Lichtenberg  
Harriett Charno  
Gus & Elinor  
Eisemann  
Arthur & Diane  
Federman  
Howard & Cherice  
Gerson  
Marvin & Adelle  
Goldstein  
Dave & Judy Jacobs  
Kurt & Stephanie  
Kavanaugh  
Dee & Joyce Pack  
Sam Goller & Roberta  
Pollack Goller  
Marvin Szneler  
Joe & Fran Wolf  
Rabbi Michael  
& Karen Zedek  
**Rose Zurovsky**  
Gert Epstein

## George & Esther Nowick Scholarship Fund

*In Memory of*  
**Esther Nowick**  
**William Nowick**  
**George Nowick**  
Manuel Nowick  
**Hanan Wedlan**  
**Family Fund**  
*In Memory of*  
**Mary Ann Mour**  
**Ida Wedlan**  
Mitch & Lisa  
Hamburg and Family

## Harry & Anita Daniels Camp Ramah Scholarship Fund

*In Memory of*  
**Max Kopin**  
Clarence & Alice  
Winer

## Harry Puritz Scholarship Fund

*In Memory of*  
**Fanny Puritz**  
Carl Puritz

## Hazzan Ben-Yehuda's Discretionary Fund

*In Memory of*  
**Leonard Bayzman**  
Steve & Marcia Schorr

## Jacob & Rose Szneler Scholarship Fund

*In Honor of*  
**Dr. Melvin & Elaine**  
**Glazer's New Home**  
Marvin Szneler  
*In Memory of*  
**Rose Szneler**  
**Jacob Szneler**  
Marvin Szneler

## Jacob H & Rose Levine Teacher Development Fund

*In Memory of*  
**Morton Hurst**  
Peter & Bev Newman

## Karbank Fund

*In Memory of*  
**Joel Vile**  
Joseph Smuckler  
& Marcia Karbank

## Kiddush Fund

*In Honor of*  
**Barbara S. Katz's**  
**80th Birthday**  
Harold Kaseff  
& Rhea Salasche  
*In Memory of*  
**Max Kopin**  
Barbara Goldstein

## Marcia Eveloff Lechem Fund

*In Honor of*  
**Al Beitchman's 80th**  
**Birthday**

**Milton &**  
**Marilyn Ozar's**  
**70th Wedding**  
**Anniversary**  
Bernard & Barbara  
Birnbau  
*In Memory of*  
**Sadye Lerner**  
Alan & Tina Chapman  
**Rae Lieberman**  
David & Rosalyn  
Burnstein  
**Joel Vile**  
Judy Krug  
**David Wallk**  
Jimmy & Sunni  
Rosenbloom

## Marcus Brand Scholarship Fund

*In Memory of*  
**Dorothea Jagoda**  
Milton & Marilyn  
Ozar

## Meyer J Pachter Video Library

*In Memory of*  
**Meyer Pachter**  
Regina Pachter

## Morris & Rose Weinberg Endowment Fund for Camp Shabbat

*In Appreciation of*  
**Stan Samberg**  
Steve Weinberg  
& Lauren Weinberg  
*In Honor of*  
**Rita Cortés Reading**  
**the Entire Torah**  
Steve Weinberg  
& Lauren Weinberg  
*In Memory of*  
**Joel Vile**  
**Judith Weinberg**  
Steve Weinberg  
& Lauren Weinberg

## Naman, Pollack, Block Youth Fund

*In Memory of*  
**Jay Pollack**  
Randy & Elyse Block

## Polsky Religious School Fund

*In Memory of*  
**Dorothea Jagoda**  
Steven Jagoda  
& Family

## Prayer Book Fund

*In Memory of*  
**Anna Glaser**  
**Joseph C. Glaser**  
Sharyn Burnstein

## Rabbi Glickman's Discretionary Fund

*In Memory of*  
**Jane A. Klaiber**  
Steve Feinstein  
**Nathan Reiz**  
Andy & Zelda Reiz  
**Joel Vile**  
David Gale  
& Gina Kaiser  
Ron & Susie  
Goldsmith  
Howard & Lynda  
Hirsekorn  
Marcelle Kaiser  
Stewart & Esther Stein

## Romotsky, Price, Cortés Genetic Testing Fund

*In Honor of*  
**Rita Cortés Reading**  
**the Entire Torah**  
Marvin Szneler  
*In Memory of*  
**Joel Vile**  
**David Wallk**  
Gary Cortés

## Rose Family Early Childhood Education Center

*In Memory of*  
**Aileen Forman**  
Jack Forman  
**Howard Levitan**  
Ed & Ellen Rose

## Rose S Levine & Doris L Flam Arts & Education Fund

*In Memory of*  
**Morton Hurst**  
**Joel Vile**  
Tibor & Carla  
Klausner

**Muriel Stulz**  
Mickey & Marge  
Adler

## Security Fund

*In Appreciation of*  
**Judy Jacks Berman**  
Miles & Sally Ross

## Sylvan Siegler Scholarship Fund for Jewish Camping

*In Memory of*  
**Howard Levitan**  
Al & Sharon Cohen  
**Amalie Siegler**  
**Joel Vile**  
Merna Siegler

# Happy ♥ Anniversary

August Anniversaries will be celebrated on August 19.  
To sponsor a Kiddush contact Jill, 913-647-7286.

Day		Years	Day		Years
1	Jeremy & Debra Sandler	13	18	Harold & Linda Schlozman	49
1	Joshua & Sheryl Stein	13	18	Robert & Aletha Simon	54
2	Howard & Debra Cohen	36	19	Clifford & Paula Cohen	45
4	Stephen & Riki Fein	54	19	Edward & Alicia Klein	27
5	Gustav & Flora Faverman	42	19	Isac & Elaine Rosenberg	44
5	Jared & Lauren Levy	5	19	David & Gail Wainstock	27
5	Lloyd & Jacqueline Stahl	38	20	Melvin & Elaine Glazer	50
6	Brian & Adryan Steinberg	11	20	Dennis & Michelle Kelly	35
10	Lawrence & Nancy Carl	37	22	Alan & Joan Jacobson	46
10	William & Marjorie Schlosberg	48	23	Michael & Laurel Rogovein	58
11	Elliott & Nancy Franks	44	23	David & Frances Sternberg	47
11	Allan & Marilyn Kaufman	43	25	Erwin & Phyllis Abrams	54
11	Melvyn & Janet Kogan	54	25	Arnold & Joan Kort	54
12	Steven & Judy Berman	42	26	Alexander & Peggy Davis	44
13	Arthur & Diane Federman	45	26	David & Jennifer Podor	38
13	Jay & Katharine Levine	22	27	Richard & Charlotte Brockman	56
14	Al & Barbara Beitchman	57	27	Roger & Berenice Haberman	22
14	Stanley & Marjorie Brand	51	28	Lawrence & Harriet Almaleh	34
15	Roger & Nancy Klein	46	28	Peter & Amy Lerner	12
15	Jerald & Rochelle Pelofsky	52	28	Scott & Carla Oppenheimer	29
15	Michael & Beth Sherry	13	28	Daniel & Vivien Schlozman	57
15	Stewart & Esther Stein	46	29	Stephen & Ellen Kort	46
16	David & Judy Jacobs	60	30	Robert & Evie Grant	30
16	Eric Poe & Helaine Cohn	19	30	Arnold & Dorene Manvitz	53
17	Jeremy & Danielle Antes	9	30	David & Gerri Ruben	25
17	David & Rosalyn Burnstein	59	31	Jeffrey & Corrine Blackman	32
17	Byron & Gerri Ginsburg	31	31	Marc & Alana Hammer	20
17	Stephen & Toba Maslan	42	31	Barry Kaseff & Jessica Rudnick-Kaseff	31
18	Alan & Tina Chapman	54	31	Michael & Julie Levine	20

## B'nei Mitzvah

### Aaron Kohl

August 12 / 20 Av



Aaron's parents are Bella Oshry and Jason Kohl. Grandparents are the late Selwyn and Rachel Oshry and the late Lawrence and Sharon Kohl. Aaron's brother is Benjamin Kohl and his sister is Evelyn Kohl.

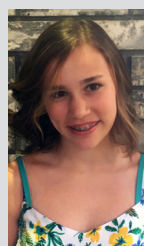
Aaron attends the Hyman Brand Hebrew Academy. His hobbies include soccer, tennis, golf, and basketball.

For his mitzvah project, Aaron is volunteering at the KC Pet Project.

Relatives and friends are invited to worship with the family and attend the Kiddush Luncheon following services.

### Audrey Rosemae Brand

August 19 / 27 Av



Audrey's parents are Jasmine Kaplan and Elliot Brand. Grandparents are Margie and Stanley Brand, Jeanne and Ali Alaman and Marian Kaplan. Audrey's siblings are Addison & Evelyn Brand and Macie Kaplan.

Audrey attends the Hyman Brand Hebrew Academy. Her hobbies include cross country, basketball and playing with her younger sisters.

For her mitzvah project, Audrey is volunteering with special needs children.

Relatives and friends are invited to worship with the family and attend the Kiddush Luncheon following services.

Congregational-Wide Events - See each department for their activities

Sunday	Monday	Tuesday	Wednesday	Thursday	Friday	Saturday
		<b>1</b>	<b>2</b> Warm Up America!  SH to Ronald McDonald House	<b>3</b>	<b>4</b>	<b>5</b>
		9 Av	10 Av	11 Av	12 Av 8:07 Candle Lighting	13 Av 9:06 Havdalah Shavuah Tov!
<b>6</b>	<b>7</b>	<b>8</b>  SH Executive Committee Meeting	<b>9</b>  SH Book Club	<b>10</b>	<b>11</b>	<b>12</b> Bar Mitzvah of Aaron Kohl Birthday Shabbat
14 Av	15 Av	16 Av	17 Av	18 Av	19 Av 7:59 Candle Lighting	20 Av 8:58 Havdalah Shavuah Tov!
<b>13</b>  B'nei Mitzvah Parents' Meeting	<b>14</b>  CBS Board Meeting	<b>15</b>	<b>16</b>  SH Board of Directors Meeting	<b>17</b>	<b>18</b>	<b>19</b> Bat Mitzvah of Audrey Brand Anniversary Shabbat Tot Shabbat
21 Av	22 Av	23 Av	24 Av	25 Av	26 Av 7:50 Candle Lighting	27 Av 8:48 Havdalah Shavuah Tov!
<b>20</b>  PRS Open House	<b>21</b>	<b>22</b>  SH New Night Group Membership Event	<b>23</b>  PrayerWorks PRS Jump Start for Grades 3-7	<b>24</b>  Judaism for Conversion Candidates Begins	<b>25</b>	<b>26</b>  PrayerWorks Shabbat
28 Av	29 Av	30 Av	1 Elul	2 Elul	3 Elul 7:40 Candle Lighting	4 Elul 8:38 Havdalah Shavuah Tov!
<b>27</b>  Day of Discovery 8:45 am - 3:00 pm  Back to Shul Bash 4:00 pm	<b>28</b>	<b>29</b>	<b>30</b>  PRS Jump Start for Grades 3-7	<b>31</b>		
5 Elul	6 Elul	7 Elul	8 Elul	9 Elul		

CBS Offices Closed

## Candle Lighting Blessing

ברוך אתה ה' אלקינו מלך העולם אשר קדשנו במצותיו וצונו להדליק נר של שבת.

Barukh ata Adonai Eloheinu melekh ha'olam, asher kideshanu b'mitzvotav vetzivanu lehadlik ner shel Shabbat.

## August Service Schedule

### Weekdays

Minchah:

**Sunday-Thursday**

**6 pm**

Shacharit:

**Monday-Friday**

**7 am**

## Shabbat CBS

Kabbalat Shabbat:

Main Service:

Library Minyan:

Minchah:

Minchah:

Minchah:

Minchah:

Shacharit:

**Friday**

**Saturday**

**Saturday**

**August 5**

**August 12**

**August 19**

**August 26**

**Sunday**

**6:00 pm**

**9:30 am**

**9:30 am**

**8:07 pm**

**7:59 pm**

**7:50 pm**

**7:40 pm**

**8:00 am**



Shabbat Services and Sunday morning Shacharit will be held at CBS, 14200 Lamar.

Weekday Minyan will be held at Appleman Synagogue, Village Shalom, 5500 W. 123rd St.

\*Please Note: On Tuesday, Wednesday and Fridays, Ohev Sholom will join us for the Morning Minyan.





## CONGREGATION Beth Shalom

David M. Glickman, *Senior Rabbi*  
Hazzan Tahl Ben-Yehuda,  
*Director of Congregational Learning*  
Bernie Fried, *Executive Director*  
Alan L. Cohen, *Rabbi Emeritus*  
Judy Jacks Berman, *Director, RFEC*  
Richard Simon, *President*  
Bev Newman, *Scroll Editor*  
Dahlia Berger, *Scroll Design*

The Congregation Beth Shalom  
Scroll (USPS 531-420) is  
published monthly by  
Congregation Beth Shalom,  
14200 Lamar Ave., Overland  
Park, KS 66223. Annual  
Subscription \$24.00. Periodical  
Postage Paid in Kansas City, MO.  
**DATED MATERIAL**

**POSTMASTER:** Send address  
changes to CONGREGATION  
BETH SHALOM SCROLL,  
14200 Lamar, Overland Park,  
KS 66223. Scroll Deadline: The  
1st of the previous month. Submit  
articles to the Administrative office  
before the deadline.

### Congregation Beth Shalom

14200 Lamar • Overland Park, KS 66223

[www.bethshalomkc.org](http://www.bethshalomkc.org)

Office: 913-647-7279 • Fax: 913-647-7277

*Congregation Beth Shalom, an egalitarian Conservative synagogue,  
is a welcoming community of individuals from diverse backgrounds,  
strengthening connections with God, Torah and the Jewish people  
through communal commitment to prayer, study and acts of loving kindness.*

#### Coming Attractions:

Scroll Deadline:  
August 5 for September

Offices Closed,  
Morning Minyan at 8 am  
September 4

Tiberius Klausner Competition  
September 17

Erev Rosh HaShanah,  
Offices Close at Noon  
September 20

Offices Closed for Rosh HaShanah  
September 21 & 22

Erev Yom Kippur,  
Offices Close at Noon  
September 29

Yom Kippur  
September 30

#### Office Hours:

Monday - Thursday  
8:30 am - 5 pm  
Friday  
8:30 am - 3 pm  
*Closed on Federal Holidays*

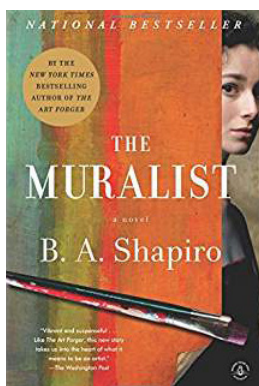
#### Mt. Carmel Cemetery Winter Hours:

Monday, Wednesday 8 am - 4 pm  
Tuesday, Thursday Closed  
Saturday Closed  
Friday & Sunday 8 am - 4 pm  
National Holidays 9 am - 4 pm  
*Exceptions: Thanksgiving,  
Christmas Day, New Year's Day & Easter*  
Jewish Holidays Closed  
Phone: 816-398-9290

#### Sisterhood Gift Shop Hours:

**July 10 - 28**  
Monday 10 am - 12 pm  
Wednesday 10 am - 12 pm  
Friday 10 am - 12 pm  
Other Hours by Appointment Only  
**913-647-7298**

## Sisterhood Book Club Reminder



SH Book club will meet on  
Wednesday, August 9 at 7:00 pm at  
Tina Chapman's. We will be discuss-  
ing the *Muralist* by Barbara Shapiro.

For more information contact Linda  
Lessner at [llessner@kc.rr.com](mailto:llessner@kc.rr.com) or  
913-897-0122.