

2017 High Holiday Schedule

All services will be held at the JCC Campus except for Tashlikh

Erev Rosh HaShanah – Wednesday, September 20

6:30 pm White Theatre

1st day of Rosh HaShanah – Thursday, September 21

8:30 am Traditional Service White Theatre
with Rabbi Glickman & Hazzan Ben-Yehuda

8:30 am K-2nd Grade Programming CDC Common Area

8:30 am 3rd-5th Grade Programming ASK Room

9:00 am Family Service, ages infant-Pre-K Chapel

9:30 am Social Hall Service Social Hall

10:00 am Social Hall D'var Torah Social Hall

10:15 am 3rd-5th Grade Service Chapel

11:00 am Traditional Service D'var Torah White Theatre

11:15 am K-2nd Grade Service Chapel

4:00 pm *Community Tashlikh Service

Park/Bridge behind Leawood City Hall

4800 Town Center Drive Leawood, KS

6:00 pm Minchah/Ma'ariv Service Social Hall

Candle lighting will be after 8:00 pm

2nd day of Rosh HaShanah – Friday, September 22

8:30 am Traditional Service White Theatre

8:30 am K-5th Grade Programming ASK Room

9:00 am Family service – ages infant-Pre-K Chapel

10:30 am K-5th Grade Service Chapel

10:00 am Rimom Service Social Hall

with Rabbi Glickman & Hazzan Ben-Yehuda

11:30 am Traditional Service D'var Torah White Theatre

6:00 pm Minchah/Erev Shabbat Services Social Hall

Shabbat – Saturday, September 23

9:30 am Shabbat Services Social Hall

9:30 am Library Minyan Chapel (2nd floor)

6:56 pm Minchah/Ma'ariv/Havdalah Social Hall

Erev Yom Kippur – Friday, September 29

6:30 pm Minchah/Kol Nidrei/Kabbalat Shabbat White Theatre

Please plan on arriving early to ensure timely seating.

Yom Kippur – Saturday, September 30

8:30 am Traditional Service White Theatre

with Rabbi Glickman & Hazzan Ben-Yehuda

8:30 am K-2nd Grade Programming CDC Common Area

8:30 am 3rd-5th Grade Programming ASK Room

9:00 am Family Service, ages infant-Pre-K Chapel

9:30 am Social Hall Service Social Hall

10:00 am D'var Torah & Yizkor service Social Hall

10:15 am 3rd-5th Grade Service Chapel

11:00 am D'var Torah & Yizkor Service White Theatre

Yom Kippur Afternoon Learning Sessions TBD

11:15 am K-2nd Grade Service Chapel

4:35 pm Minchah/Ne'ilah/Ma'ariv White Theatre

7:35 pm Sounding of the Shofar & Havdalah White Theatre

Please Note: Youth & Childcare Programming will conclude 10 minutes following the end of adult services. If your child will be staying past noon, please send a kosher dairy lunch.



Erev Sukkot – Wednesday, October 4

6:00 PM Minchah Goldsmith Hall

Sukkot, Day 1 – Thursday, October 5

9:30 AM Services Goldsmith Hall

11:00 AM Kids' Service Library Reading Area

Kiddush lunch in Goldsmith to follow for adults (catered)

Pizza bagels/cookie decorating in the Sukkah for youth

6:00 PM Minchah Goldsmith Hall

Sukkot, Day 2 & Erev Shabbat – Friday, October 6

9:30 AM Services Goldsmith Hall

11:00 AM Kids' Service Library Reading Area

Kiddush lunch in Goldsmith to follow for adults (catered)

Pizza bagels/cupcake decorating in the Sukkah for youth

6:00 PM Kabbalat Shabbat Outside (weather permitting)

Kiddush Sukkah

7:10 PM Under the Stars Dinner Outside (weather permitting)

Shabbat Sukkot – Saturday, October 7

9:30 AM Services Goldsmith Hall Only

6:34 PM Minchah/Ma'ariv

7:34 PM Havdalah

Sukkot, Day 4 – Sunday, October 8

8:00 AM Services Goldsmith Hall

6:00 PM Services Village Shalom**

****CHOL HAMOE'D SERVICES RETURN TO VILLAGE SHALOM ON THE EVENING OF OCTOBER 8 THROUGH THE MORNING OF WEDNESDAY, OCTOBER 11.****

Hoshanah Rabah/Erev Shemini Atzeret (PM)

Wednesday, October 11

6:45 AM Services w/ beating of the willows Goldsmith Hall

8:00 AM Breakfast in memory of Alec Bratt, z"l Goldsmith Hall

6:00 PM Minchah Goldsmith Hall

Shemini Atzeret/Erev Simchat Torah – Thursday, October 12

7:00 AM Services w/Yizkor Goldsmith Hall

9:30 AM 2nd Service w/Yizkor Goldsmith Hall

6:15 PM Geshet Simchat Torah Library Reading Area

Family Dinner & Program

7:15 PM Ma'ariv in Goldsmith followed by Hakafot

(1st Hakafa for children)

7:30 PM Happy Birthday Sifrei Torah, Goldsmith Hall

celebrations and candy for all!

Simchat Torah – Friday, October 13

9:30 AM Services Goldsmith Hall

Honoring Kallat Torah, Rita Cortés

& Chatan Bereishit, Alan Edelman

6:00 PM Minchah Goldsmith Hall

Kallat Torah & Chatan Bereishit

This year Rita Cortés, Kallat Torah, and Alan Edelman, Chatan Bereishit, will be honored as congregational volunteers on Simchat Torah morning. Please join us on October 13 as we celebrate with our honorees.

Alan Edelman is a native of Kansas City and a lifelong member of Beth Shalom, having graduated from its nursery and Hebrew Schools. He attended Camp Ramah and served as USY chapter Chaplain, Membership Vice-President and President. He also served as Emtza Region Treasurer and President.

After receiving his Bachelor's Degree in Child Development and Education, including a year at Hebrew University in Jerusalem, Alan attended the Jewish Theological Seminary, where he received his Master's Degree in Jewish Education. He also holds a Master's Degree in Education Policy and Leadership.

From 1977-1980 he served as CBS Educational Director and then spent

two years as Regional Director of Central States/Provinces Region of USCJ.

On July 1, 1982 he became the Executive Director of the Central Agency for Jewish Education of Greater Kansas City (CAJE), a committee of the Jewish Federation. On October 1, 1994, Alan's responsibilities were expanded to include community planning, human resource development, identity and education and Israel/Overseas programming, serving as Associate Executive Director until his retirement last June.

Alan and his wife, Debbie Sosland-Edelman, have four children, Alex, Katja & Ari Fine and Jonathan.

Rita Cortés is a lifelong Beth Shalom member, having graduated from its nursery school and Hebrew School. She attended Camp Ramah, served as KCUSY President and Emtza Region Treasurer and President. In fact, Rita served as Emtza Treasurer

when Alan Edelman was Regional Director and attended religious school when Alan was Education Director.

Rita received her BA from Rice University, law degree from George Washington University and LLM in Taxation from UMKC.

Her professional experience includes working on Capitol Hill for Senator Bob Dole, Representative Jan Meyers, and Senator Jack Danforth; practicing law in the D.C. area; 18 years with Hoffman Cortés Contracting; and being a corporate law partner at Seigfreid Bingham. Rita currently serves as Executive Director of the Menorah Heritage Foundation, supporting the Foundation board in making grants to agencies in the Jewish and general Kansas City community. Rita has also been involved as a volunteer in a wide variety of non-profits. Rita is married to Mary McLean, and a doting aunt to her four nieces and nephews, Adam, Rachel, Eli and Miriam.

2017 Security & Parking

Each year, we must be diligent with our security procedures to ensure a safe environment for our congregants. There will be a very obvious police presence at the JCC during all services. There will be no admission without a ticket. If you do not



carry during the holidays, please check in at the door with one of our staff who will have a list of everyone who

has been mailed High Holiday tickets.

The JCC is closed for all other activities on the High Holidays, and all available parking spaces, with the exception of the area reserved for Pillar parking, may be used. The Sprint garages may not be used.

2017 Ticket Policy

- All members in good standing will receive tickets by mail. Your children under age 25 are free and do not require a ticket when attending services with you.
- Guest tickets are available online at \$175 each and will be mailed to either you or your guest, whichever you indicate.
- If your account is in arrears, please contact our bookkeeper, Pam Fite at

913-647-7271 to arrange a payment plan. If this is not feasible, please contact Bernie Fried at 913-647-7293. It is our mission for all congregants to be able to attend services irrespective of their financial situation as long as you contact Bernie before the holidays.

- Reciprocal Guest Tickets are available for those belonging to another Conservative Synagogue. Their home

synagogue must order the tickets for them. Guest ticket requests should be sent to Maggie Hultman at maggieh@bethshalomkc.org.

- For those who are not members, we have free Rimmon tickets to attend this service and free young family service tickets. Family services begin at 9:00 am and tickets must be picked up at the front desk of the Preschool prior to the holidays.

High Holiday Honors for 5778 (2017)

If you would like to receive an honor for Rosh HaShanah or Yom Kippur, there are two ways to accomplish this:

Plan 1- Congregants are welcome to log on to our website at <http://bethshalomkc.org/2-ritual/hh-high-holiday-honors/> and fill out the form requesting an honor.

An email will be sent to you confirming your request.

Plan 2- Officers, board members and other volunteers will be calling congregants who celebrated a special

occasion in the past year such as a 50th wedding anniversary, a Bar or Bat Mitzvah or a special birthday. They will be offering those celebrants an aliyah in honor of those occasions. If you celebrated a special simchah and do not want to wait for a call, feel free to contact Jill at jgoldstein@bethshalomkc.org or go to Plan 1.

Honors include Torah aliyot, ark openings/closings, English readings and carrying the Torah in either the processional or recessional. Questions, contact Jill at the above email address.

Congregational Calendar Available at Rosh HaShanah Services

The 2017-18 congregational calendar/directory, a project of our Sisterhood, will be distributed on the first day of Rosh HaShanah, Thursday, September 21, outside both the White Theatre and the Social Hall at the JCC as you leave services. **Please redeem your calendar with the special calendar ticket included with your services tickets.**



If you are unable to pick up your calendar at this time, it will be mailed between the end of Rosh HaShanah and Yom Kippur. Sisterhood thanks you for helping save on mailing costs.

Selichot Helps Prepare Us for the High Holidays

The community-wide Selichot program and service will take place on Saturday night, September 16, at Congregation Beth Torah. The evening will begin with a dessert reception at 8:00 pm followed by Havdalah at 8:45 pm. A creative, interactive performance of "The Sarah Play" produced by Jon Adam Ross, a playwright and performer, will be presented at 9:00 pm. The play is part of the InHeirance Project which explores modern interpretations of

Judaism's patriarchs and matriarchs. This presentation is brought to Kansas City by the J's Midwest Jewish Artists Laboratory.

The Selichot service will start at 10:10 pm and is designed to help worshippers begin to spiritually prepare for Rosh HaShanah and Yom Kippur by examining one's deeds of the past year and directing one's heart and mind to the process of *teshuvah* (repentance) and seeking forgiveness. The service will be led by area clergy

Young Family Services

Linda Salvay will be leading the young family services once again for the High Holidays. The services will be in the Chapel upstairs at the campus from 9:00 to 9:45 am both days of Rosh HaShanah as well as Yom Kippur. Please call the preschool office with any questions,

913-647-7285. Linda Salvay discovered her love of Jewish music as a teen at Camp Herzl and in USY. She has performed as both a soloist and as a member of musical groups Shir Ami in St. Louis, and the Chai Singers and Yachad-The Traveling Tefillah Band in Kansas City. Her original

Mt. Carmel Memorial Service

Our annual Mt. Carmel Cemetery High Holiday Memorial Service will be held Sunday, September 24, at 1:00 pm in the Yukon Chapel.

There will be time for visiting the graves of our loved ones following the service, and our caretakers, Jim and Bob, will be available to direct you to



the gravesites you may wish to visit.

Our tradition teaches us about the merit of praying by the graves of our loved ones, and we honor the beautiful custom of coming together for prayer, reflection and grave visitation during the High Holiday season.

For further information, contact Trinity at 913-647-7281.

and musicians. Services will also be held at Kehilath Israel at 11:00 pm and at Beth Israel Abraham and Voliner at 1:10 am.

For more information, visit www.kcrabbis.org or contact Annette Fish, Rabbinical Association Administrator, afprogram@aol.com or 913-327-4622. The Rabbinical Association of Greater Kansas City sponsors the Selichot program with generous support from the Jewish Federation of Greater Kansas City.

compositions include a rendition of "Ani Ma-Amin" that was chosen from entries worldwide for inclusion in the eighth annual Chasidic Song Festival in Israel. Among her current musical endeavors, she enjoys Shabbat singing each week with preschoolers in the RFECEC.

From the Rabbi's Study

The Rabbi's Letter Home: Our Whole Hearts and Our Whole Souls



There are two places in the book of Deuteronomy where we see the words “heart and soul.” In the Shema, we are instructed to “Love the Lord your God with all your heart, with all your soul and with all your ability.” (Deuteronomy 6:5). Later in the same book we read: “The Lord your God commands you this day to observe these laws and rules; observe them faithfully with all your heart and soul.” (Deut. 26:16).

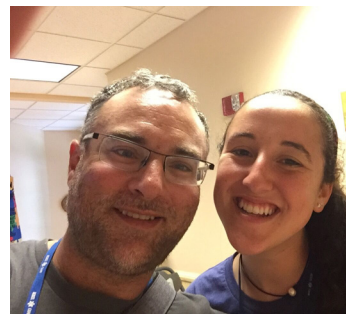
Jewish camp is the best place to live Jewishly with all your heart and soul. This year, Congregation Beth Shalom was blessed to have young people at Camp Sabra, the JCC camps here in KC, JCC Ranch Camp in Colorado, Herzl Camp, Ramah camps in Wisconsin, Colorado, Georgia and Northern California, USY, BBYO and NCSY trips to Israel, BBYO leadership camps... you name it! This summer I had the chance to visit our campers and staff at Herzl Camp and Ramah

Wisconsin. Below are just a few of the pictures. If you have pictures of your kids from a Jewish camp this summer, please email them to Maggie at maggieh@bethshalomkc.org so we have more photos of our kids having a great time!

I hope that everyone had a great summer, and Annie joins me in wishing you and your family a joyful new year!

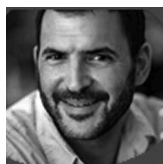
David M. Glickman

Rabbi David M. Glickman
dglickman@bethshalomkc.org



Executively Speaking

Approaching the Jewish New Year, 5778 By Victor Wishna



Wow, is it (almost) 5778 already? It might seem ridiculously obvious to point out what an important part of the calendar is upon us—three-plus weeks packed with the highest of holidays, from the opening shofar blasts of Rosh HaShanah to the reflection and t'shuvah of Yom Kippur, and onto the festivity of Sukkot and celebration of Simchat Torah.

For Beth Shalom, this has become the time of year when our entire kehillah convenes in such large numbers that we create another home away from home at the Jewish Community Campus. Rabbi Glickman and Hazzan Ben-Yehuda, with the support of dedicated staff and

dozens of volunteer leaders will oversee a range of services and programs, from the White Theatre to the Social Hall to the return of our popular Rimon service on the second day of Rosh HaShanah, offering different ways to connect as we all transition into another year.

This is a time of transition in another way. Alan Edelman, who this summer retired after 35 years of leadership at Jewish Federation of Greater Kansas City will also transition out of his role as *Shaliach Tzibur* for our High Holiday Social Hall services, a responsibility he has performed with wisdom and charm for nearly as long. We are incredibly grateful to Alan for his leadership and continual efforts to strengthen and enliven our community. We will have the chance to formally thank and honor him

and his family on Simchat Torah.

We are pleased to announce that Rabbi Jonathan Rudnick has agreed to fill the rabbinic duties for our Social Hall services. We are also thrilled to announce that *Yachad*, under the direction of Devra Lerner, is getting back together and will accompany Rabbi Rudnick on the first day of Rosh HaShanah.

Rosh HaShanah is, of course, a beginning to a year of Shabbatot, holidays, new programs and lifecycle events at Beth Shalom and we look forward to sharing them all together. May the moments of individual meaning and spirit of community that we are about to experience carry forward and continue into the weeks and months to come.

Wishing you a good and sweet year, *Shanah Tovah Umetukah*.

From the Desk of the Director of Congregational Learning

Hazzan Tahl Ben-Yehuda, Director of Congregational Learning | hazzantby@bethshalomkc.org

Shehechyanu Moments



When we wish each other "Happy New Year!" we think of January 1. When we see each other in school again for the first time after summer vaca-

tion, we ask each other "how was your summer?." When we see each other at shul for the High Holidays, we wish each other "Shanah Tovah." There are appropriate greetings for these and so many other special moments that come around year after year, helping us to mark the passage of time. These repeating yearly occasions which afford us the opportunity to recognize how far we

have come and to hope for the best going forward are "*shehechyanu* moments."

Those truly momentous, once-in-a-lifetime moments have prayers all their own — *shehechyanu* is for gathering again as a family to eat apples and round challah dipped in honey on Rosh HaShanah, for gathering as a community to celebrate Yom Kippur, for shaking the etrog and lulav again. It's for the first day of school, birthdays and anniversaries.

You may think of the *shehechyanu* prayer as one that you say any time something momentous happens, but that's not really what the *shehechyanu* is about. The *shehechyanu* prayer recognizes the cyclical nature of our

existence, and calls us to pause and be grateful to be in this moment again this year. It calls us to thank our creator for this moment, which is similar to the same time last year, but also different. It recognizes that between last year and this year so many things have happened, and yet we have survived and reached this time.

When we gather together for the first day of Sunday school on September 10th, and when we gather as a community to bring in Rosh HaShanah on the evening of September 20th, I will sing the *shehechyanu* with you, and I hope you know how truly grateful I am to be part of our Beth Shalom family. Shanah Tovah!

Introducing New Membership Coordinator: Maggie Hultman

Maggie loves spending time with her family and friends. Her mom lives near the Lake of the Ozarks. She is the youngest of three children and has two older brothers, four nieces and two nephews.

Maggie is from Raymore, Missouri but moved to Webb City near Joplin in 8th grade. She graduated from high

school there, and after attending the local community college transferred to "Mizzou" to complete her bachelor's degree in 2008. At MU she majored in International Studies and also studied the role religion, tradition, culture, language and so much more play in our world.

Maggie's professional background is in sales, customer service, the service industry

and administration. She was hired by CBS to fill in for Rabbi Glickman's Administrative Assistant while she was out on maternity leave.

Maggie states, "Never dreaming, I'd be welcomed so kindly by staff, clergy and members. I'm delighted to take on the role of Membership Coordinator. Please come by and say hi. I love people and I'd love to get to know everyone!"

Sisterhood

Carol Yarmo, President | shpres@bethshalomkc.org |

Sarah Peltzman Adult Education Classes

The Sarah Peltzman Adult Education Classes for 2017-18 will begin on Thursday, November 2, from 10:00-11:30 am in Goldsmith Hall. The offerings for the classes will come from the "Project zug.org" website. The cost is \$36.00 for each participant (or \$46.00 per couple) for each course. Participants have the option of downloading the course materials from "Project zug.org", or paying an extra \$5.00 to purchase the materials copied and collated by volunteers. Our teachers will be Rabbi David Glickman and Hazzan Tahl Ben-Yehuda. The classes are open to the community. Payment to register may be sent to Suzanne Lange, Education Vice-President, 3020 West 27th Street, Lawrence, Kansas 66047. Checks should be made out to Beth Shalom Sisterhood.

The course for the first session, which will run from November 2 to January 18, will be Judaism: Identity, Pluralism and Peoplehood. The course for the second session, which will run from February 1 to May 11, will be

The Prayerbook: New Interpretative Methods. Students wishing to study more in depth will be able to go online to "Project zug.org" for more information. Judaism: Identity, Pluralism and Peoplehood will discuss whether Judaism is primarily an ethnic or religious identity. Students will discuss how to work with Jews with whom we disagree and how to preserve their ideological integrity while understanding the perspectives of others. Participants will also investigate the boundaries and definitions of Jewish peoplehood and how to maintain the delicate balance between their responsibilities to themselves and to other Jews.

The Prayerbook: New Interpretative Methods will examine the many prayers composed over the years that comprise our prayerbook. Students will learn what the prayers actually mean and learn to relate to them in a more personal way. Participants will look at the prayerbook differently and investigate the Shabbat and weekday prayers to achieve deeper meaning.

Sisterhood Presents: Change Is Part Of Life

How do you adapt to changes in your life? We all face change, no matter what age we are. To quote Heraclitus, a Greek Philosopher, "The only thing that is constant is change."

Don't miss the Fall Membership Luncheon, Tuesday, September 12, 2017 at 11:30 am in Goldsmith Hall. Our dynamic speaker will be Debra Orbuch Grayson, a Licensed Clinical and Family Therapist, who will facilitate an interactive discussion

about life changes and how we can better adapt to them.

Attendees are requested to bring personal care items which Sisterhood members will use in preparing holiday gift bags for clients of Jewish Family Services. Items can be sample or regular size and don't forget those cosmetic bags that we often get.

The cost of the luncheon is \$15 for members and \$20 for guests. Mail your check made out to Beth Shalom Sisterhood to Wendy Malyn at 11504 Grant Drive, Overland Park, KS 66210.

Sisterhood is Featuring Lena's Mandelbrot & Carries Mitzvah Garden Honey



The High Holidays are just around the corner and Sisterhood is featuring Lena's Mandelbrot. Mandelbrot is great for dessert. It also is super with coffee, tea

or for a snack.

Sisterhood is taking orders for Lena's Mandelbrot for delivery by September 15, just in time for the Holidays. The cost is \$10.00 for 2 dozen and can be purchased with or without nuts. Order forms are available on the Beth Shalom website and can be mailed to the synagogue marked Mandelbrot, or you can

pick up an order form, located at the front desk in the office, and place it in the envelope with your check marked Lena's Mandelbrot. Checks should be made out to Beth Shalom SH.

Our Sisterhood Gift Shop carries locally produced Mitzvah Garden Honey. The Mitzvah Garden installed two beehives and they have produced delicious local honey for you to enjoy. Twelve ounce honey jars are available for purchase and are certified kosher. They make a great hostess gift and you'll be doing a mitzvah! Everyone wants honey to usher in the New Year. We also carry apple and honey dishes and shofars.



SH Book Club Meets October 18

Sisterhood Book Club will meet on Wednesday, October 18 at 1:30 pm at the JCC in the large boardroom on the main floor. The club will be discussing *The Septembers of Shiraz* by Dalia Sofer. "In the aftermath of the Iranian revolution, rare-gem dealer Isaac Amin is arrested, wrongly accused of being a

spy. Terrified by his disappearance, his family must reconcile a new world of cruelty and chaos with the collapse of everything they have known."

For more details or to attend, contact Linda Lessner at 913-897-0122 or at llessner@kc.rr.com.

Thank you, Bev Newman for All You Have Done

Can you retire from a volunteer position? You bet you can.

For the past eleven years, we have been blessed to have Beverly Newman volunteer her time and energy as the editor-in-chief, publisher, and heart and soul of *The Scroll*. She has sacrificed family time and personal time to ensure we produce a quality communications tool each and every month.

For all of this, we owe her a great deal of gratitude. So, with a heavy heart, we say goodbye to our mentor and friend, Bev Newman. Bev, you have earned the right to join Peter on a relaxing journey through the rest of your life, a long life to be sure. We have learned much from you, and will carry on beginning with the September *Scroll*. Safe travels and thank you.

Bernie Fried
Executive Director

David Glickman
Senior Rabbi



Youth & Informal Education

Stefanie Williams, Director | swilliams@bethshalomkc.org | 913-647-7292

We are so excited to start a new, fabulous year filled with exceptional programming, new friendships and great fun!! In case you are new to the Youth Department at CBS, below is a little background information.

KCUSY, our 9-12 grade youth group, is an award-winning chapter of United Synagogue Youth. We bring teenagers together around organized activities that promote learning, fellowship, leadership and responsibility. Our goals also include a better understanding of Conservative Judaism, involvement in the synagogue and community at large, as well as incorporating how to live a Jewish life in the secular world. The programs are created by our teens and allow them to gain insight into their Judaism while meeting other Jewish teens and having a blast! Programs are a mix of social, cultural, religious, community

service, fundraising and fun activities.

As a part of EMTZA Region USY, we have several opportunities to join our counterparts throughout the Midwest! See old friends, see camp friends or make new friends at our conventions. This year's regional schedule will kick-off with Kinnus in Minneapolis November 23-26! Let us know if you have any questions!

Youth can find out what is going on by looking on the KCUSY Facebook Page or on our Instagram account! We also have a group texting system called Remind 101, where our youth can get weekly texts or our events on their cell phones. Our September programs will be on Wednesdays, September 6, 13 and 27!

Rose Family Early Childhood Education Center

Judy Jacks Berman, Director | jjb@bethshalomkc.org | 913-647-7287

Fall is here and we are off to a great start of a new school year!

Larvae will be delivered and the children will watch as the caterpillars hatch and then spin their chrysalises. The miracle of a butterfly emerging is so exciting to see.

After enjoying watching the butterflies for a week, the children will get to release the butterflies and say good bye butterflies and watch as they fly away and explore our garden.

We plant an organic garden 3 times a year, spring, summer and fall so the kids can plant vegetables, watch them grow, water them, and eat them for snack. This is very exciting, especially for the child whose family does not have a garden. All the

children love planting and taking care of our garden.

In the Pre-K classroom we have a salt water aquarium with fish as well as living coral. The children take care of the aquarium and every month Hazzan Ben-Yehuda teaches the children about salt water aquariums and caring for them.

Teaching children about nature and science in such hands-on concrete ways help children develop a love for science as well as strengthens their natural sense of awe in their beautiful world around them!

Of Blessed Memory

We express condolences to our Beth Shalom Members, their Families and Friends.

Eugene Smith, z"l, August 8 - 16 Av

Sonja Silver-Dunbar, z"l, August 10 - 18 Av

Charles Michael Hiller, z"l, August 10 - 18 Av

Sharon Valinsky Fagin, z"l, August 20 - 28 Av

Plaques Have Been Dedicated In Memory Of...

Yahrtzeits

Join us for morning or evening minyan to say Kaddish for your loved one. See service schedule, page 11.

10 Elul-Sept. 1

Reva Bernstein
Samuel Copelman
Melvin Frischer
Harry Geller
Clara Gorman
Esther Jaben
Morris B. Penner
William Rosenberg
Sam Sheftel

11 Elul-Sept. 2

Reva Eisberg
Anna B. Glickenhaus
Joseph S. Levy
Louis Rolsky
Max Rostov

12 Elul-Sept. 3

Norman Arluck
Al Burstein
Israel Feld
Baruch Grunwald
Donald L. Intrater
Harry Jacobs
Ethel Kaplan
Israel D. Salvay
Jennie Shankman
Herman Shapiro
Esther A. Shenker
Sarah Silverman
Morris Singer

13 Elul-Sept. 4

Dora Baker
Max Benjamin
Ann Czarlinsky
Esther Kohn
Anna Levitt
Mary L. Schreiber
Harry Shapiro
David Silverman
Hyman Sokolov

14 Elul-Sept. 5

Selig Cohn
Frances Gershon
Sara Ginsberg
Melvin M. Gordon
Abraham Isserles
Jacob M. Levin
Israel Noah
Isadore Polsky
Ben Shapiro
Adam J. Siegel
Sarah Silberberg
Alex Silberman
Sam Spindler

15 Elul-Sept. 6

Abe Bergman
Olga Bruller
Selma S. Feld
Suzanne J. Geller
Bessie Ginsberg
Rose Markowitz
Linda T. Siegel
Sanders Sosland
Sender Szajnfeld

16 Elul-Sept. 7

Lucy Greenberg
Dorothy Harding
Samuel Kaplan
Sarah Plattner
Melvin Rolsky
Jerome H. Schrader
Benne Yukon

17 Elul-Sept. 8

Sam Bobrov
Rose Bordman
Katie Brown
Minnie Cohen
Mary A. Cohn
Robert Ginsberg
David Krasner
Samuel H. Levin
Sam Rosenberg
Lena Topf

18 Elul-Sept. 9

Sophie S. Agron
Leo Feingold
Louis Goldstein
J Harry Kulakofsky
Rose H. Overbeck
David Partnoy
Sarah V. Peltzman
Sol Posner
Edith G. Rosenberg
Oscar Untrif

19 Elul-Sept. 10

Fannie Brams
Bessie Gottlieb
Claire Gutovitz
Morris Jacobs
Anne B. Pollock
Freda Rosenbaum
Naomi Shabason
Sherman I. Weintraub
Anna Yukon

20 Elul-Sept. 11

Sol Botwin
Abe Broudy
Lottie Feinberg

Fred S. Goldsmith
Minnie L. Hauser
Selma Joseph
Sol Kaplan
Abraham B. Passman
Bertha Rosenberg
David Schuster
Flora R. Widlansky

21 Elul-Sept. 12

Benjamin B. Aaron
Joseph Bronstein
Meyer Cohen
Reuben Finkelstein
Milton Forman
Evelyn Greenberg
Louis Hammer
Violet D. Hoffman
Lieb Lieberman
Robert Shapiro
Joseph H. Siegel
Norman Weinstein
Edward Wolberg

22 Elul-Sept. 13

Albert Bell
Moris Copaken
Hanan Eisen
Gertrude Gandal
Joseph D. Greenbaum
Harold L. Joseph
Tamma Perlmutter
Annie Picker
Louis Portman
Beryl Rubenstein
Rachel Schwartz
Samuel L. Siegel
Margaret Weinstock

23 Elul-Sept. 14

Rose Barabechik
Florence Byer
David Cohen
Daniel L. Feingold
Leah Gandal
Yudas Graves
Zelda Lerer
Rose Levine
Ben Penner
Fannie Rich
David Sanell
Sol Schorr
Ida R. Steinberg
Mildred Supofsky

24 Elul-Sept. 15

Eva Copeland
Abraham Frost
Ben Gordon

Lillian Kanter
Gus Minkin
Norman Polsky
Sherwin N. Salasche
Isaac Vogel

25 Elul-Sept. 16

Esther Cohen
Albert A. Diamond
Jacob H. Gilgus
Martie Greenberg
Blanche Lerner
Samuel E. Segelbohm
Sylvan Siegler

26 Elul-Sept. 17

Saul Bitner
Lena Glazer
Max Hoffman
Millie K. Levy
Louis S. Sachs
Leo Schleifstein
Coralee Snyder
Baily Taxman
Daniel Tucker

27 Elul-Sept. 18

Emil Barsky
Mayme E. Becker
Edwin Chambers
Arthur Frank
Rose Lieber
Rebecca Louis
Rose Milens
Frank Soltz
William Stein
Ida Swerdloff

28 Elul-Sept. 19

Jenny Blum
Morris Cohen
Karl Copelman
Joe M. Dunn
Michael Fingersh
Maurice Horowitz
Harry Kisluk
Blanche Marks
David Parelman
Arnold Parnes
Harry Stevens
Sarah Summers
Bernard C. Unger
Esther Weiner

29 Elul-Sept. 20

David Blond
Allene Carroll
Sol E. Dennis
Sidney Erdman

Paul Gilgus
Leon C. Grossman
Rose Kosovitz
Harry J. Oshiver
Samuel I. Oshiver
Ralph Rosenberg
Irving Schoen
Robert Seiffer
Rae Silberman
Mezeh M. Viner

1 Tishrei-Sept. 21

Bessie Berman
Samuel M. Bigus
Annie Bortnick
Daniel Brenner
Berl Chaba
Fayge Chaba
Paul Cohen
Arthur Epstein
Dora Finkelstein
Frances C. Fogel
Akiba Garowitz
Eli Gershon
Harry Gilbert
Arlene Grossman
Pearl P. Hoffman
Lipman Kopinsky
Moses Kopinsky
Sascha Kopinsky
Toibe Kopinsky
Zelig Kopinsky
Mamie Kraft
David Levin
Jeanette K. Levine
J. David Pittell
Hannah Present
Ruben Seigel
Fannie Shapiro
Dora Stanborn
Morton Swartz

2 Tishrei-Sept. 22

Tammie Fingersh
Morris Hans
Paul Jaben
Marjorie R. Kantor
Zelda Kross
Ella Lustig
Milton Malamud
Irving Millstein
Jerry S. Penzner
Thelma Rosenberg
Frank Schlozman
Louis Silberberg
Lena Sorkin

3 Tishrei-Sept. 23

Sarah Behrman
Dora S. Dekro
Joseph Dekro
Isaac Ducov
Jennie Gorman
Morris Kort
Samuel Kort
Morris Litvian
Max Navran
Gitla Posmantier
Anna R. Sandhaus
Juliette Seiden
Lazarus Smith
Joe Wolberg

4 Tishrei-Sept. 24

Anne Baum
Max Berman
Ida Devins
Liba Falus
Sol Ginsberg
Cecil Kaminsky
Harry Kaplan
Esther Levine
Myer Lieberman
Etta Magazine
Sidney Magazine
Jean S. Robin
Khaya Schuster
Sylvia L. Traxler

5 Tishrei-Sept. 25

Rita Bayless
Jack Bohm
Philip Herowitz
Jacob Hyman
Herman Koch
Rose Rapaport
Ben Rosenberg
Joseph J. Singmon
Anna L. Stolov
Morris Traxler

6 Tishrei-Sept. 26

Esther Becker
Evelyn S. Brown
Sara Davidow
Rose R. Goldberg
Minnie Gordon
Marian Hermanson
Sarah B. Myron
George C. Newberg
Dorothy A. Novorr
Sadye Rubinfire
Albert Saver
Abraham Steinzeig

Herman Tweed
Isaabel S. Viner

7 Tishrei-Sept. 27

Lisa G. Barash
Nellie F. Coleman
Aida Gilgore
Fannie Karosen
Anna R. Koppel
Sherburne Krieger
William Jack Newton
Frieda Schlein
Jack I. Shear
Gertrude Weneck

8 Tishrei-Sept. 28

William B. Berkowitz
Benjamin Brand
Minnie Frischer
Golda House
Flora Pelofsky
Joe Rubin

9 Tishrei-Sept. 29

Esther Gibian
Rebecca L. Grossman
Baruch J. Harding
Miriam G. Harding
Ida R. Katzman
Samuel Kopel
Melba Levine
Sol Lipsey
Sam Marcus
Ethel Markowitz
Jacob Risburd
Louis Rosenberg

10 Tishrei-Sept. 30

Samuel Brockman
Akiba Byers
Velie Dubinsky
Nettie Feinberg
Meyer Finkelstein
Sarah Gardesky
Eli Grossman
Elsa Gundelfinger
Isaak Levine
Harold L. Marks
Joseph Moskowitz
Edith Pinsky
Harry Rubenstein
Prywa Salzenstein
Freidel Schwartz
Jacob Schwartz
Nathan Schwartz
Sashe Schwartz
Israel Weinstein
Nessy L. Weinstein

Benjamin Ryweck Torah Fund

In Honor of
Linda Cohen's
Birthday
Rabbi David & Annie
Glickman's 21st
Wedding Ann.
Susan F. March's
Birthday
Rabbi Lewis
Warshauer's
Birthday
Joan March
In Memory of
Elizabeth Bohm
Joan March
Frank Goldstein
Walter Harris
Ted & Jill Goldstein
William Haith
Hyman Schere
Sarah Schere
Edward & Rickie
Haith
Joel Vile
Marvin & Janice
Finkelston

Beth Shalom General Fund

In Honor of
Judge Arthur
Federman's
Retirement
Edward Goldstein
& Rachel Krantz
Rabbi David & Annie
Glickman
Cara Krashin
Sid Kanter's 70th
Birthday
Johanna Stein
In Memory of
Marie Bernstein
Robert Smith
Elizabeth Bohm
Harriett Charno
Lauren DiMeglio
Richard & Abby
Elbaum
Pamela Klumb
Neil & Blanche
Sosland

Barbara Enslein
Jerald Enslein
Ronah Epstein
Joseph Lesser
Don Finestone
Linda Finestone
Della Glass
Paul & Janet Leeds
Bessie Goldberg
John Goldberg
& Marla Brockman
Morton Hurst
James Algje
Harriett Charno
Melvin & Sibby
Cosner
Renee Haith
Mike & Anne Jacobs
Jerold & Robin Kaplan
Rae Jacobs
Dave & Judy Jacobs
Ida Joseph
Shirley Beiser
Donald Kopin
Milton Mann & Irene
Goodman
Jake Lazarus
Harold Levine
Max Lerer
Jerry & Barbara
Cosner
Sam Levy
Abe & Marlene Kopec
Beverly Mann
Milton Mann
Irving Nasaw
David Nasaw
Renetta Prebluda
Jonathan & Ellen
Chilton
Stanley D. Rostov
Irvin Belzer
& Sue Mccord-Belzer
Judy Belzer-Weitzman
Frances Sandler
Bettye Balkin
Jerome Schneider
Alan Schneider
Esther Shapiro
Marietta Dunn
Morris Shenker
Hanan Steinzeig
Helen Spector
Harold & Natalie
Klopper

Rose Waldner
Marvin & Janice
Finkelston
Rose Zurovsky
Gert Epstein

Beverly & Harvey Bodker Endowment Fund

In Memory of
Morton Hurst
Fred & Cindy Bodker
Betsy Bodker

Boy Scout Troop 61

In Memory of
Etta Bayzman
Mark Bayzman

Building Fund

In Memory of
Morton Hurst
Hanan & Natalie
Hammer

Cemetery Maintenance Fund

In Honor of
Isaac Zale
Susan Zale
In Memory of
Isadore Fleschman
Sheldon & Jackie
Fleschman
Bessie Goldberg
Gerry Goldberg
Retha D. Lisman
Harvey & Cyndi
Zidell
Morris Sedler
Lula Sedler
Richard Sedler

Dave & Jean Brockman Scholarship Fund

In Honor of
Richard Brockman's
85th Birthday
Estelle Pinsky

Eleanor & Joseph Kopin Endowment Fund

In Memory of
Donald Kopin
Rob & Cindy Daniels

Eugene & Shirley Novorr Tots for Torah Fund

In Memory of
Morton Hurst
Shirley Novorr
Keith & Vicki Novorr
Donald Kopin
Shirley Novorr

Florence & Meyer Kaplan Sukkot Festival Fund

In Honor of
Birth of Alexander
David Kaplan
Florie Kaplan
In Memory of
William Kaplan
Florie Kaplan

Gale & Maxine Grossman Religious School

In Memory of
Charles Bass
Marty Bass
Maxine Grossman

George B & Marian Durbin Prayer Book Fund

In Memory of
Morton Hurst
Jeff & Carol Katz

Hazzan Ben-Yehuda's Discretionary Fund

In Memory of
Elizabeth Bohm
Ed & Rickie Haith
Marian Shapiro
Rita Shapiro

Jacob & Rose Szneler Scholarship Fund

In Memory of
Morton Hurst
Marvin Szneler

Jacob H & Rose Levine Teacher Development Fund

In Memory of
Sharon Fagin
Art & Linda Levine
Peter & Bev Newman
Morton Hurst
Sheldon & Jackie
Fleschman

Karbank Family Fund

In Memory of
Donald Kopin
Mark & Diane
Davidner

KCUSY

In Memory of
Morton Hurst
Steve & Milisa Flekier

Kiddush Fund

In Memory of
Elizabeth Bohm
Esther Goldstein
Donald Kopin
Marvin & Carol
Goldstein
Sharon Fagin
Ed & Rickie Haith
Joe Posner
Marvin & Carol
Goldstein
Scott & Debra
Goldstein

Louis & Edith Pinsky

In Memory of
Louis Pinsky
Dick & Charlotte
Brockman
Estelle Pinsky

Marcia Eveloff Lechem Fund

In Honor of
Audrey Brand's
Bat Mitzvah
Dolores Sosnow
In Memory of
Harriet Dubinsky
Jerry & Barbara
Cosner
Serena Tabolsky
Eisman
Hope & Marshall
Talbot
Morton Hurst
Herb & Barbara
Simon
Donald Kopin
Judy Krug
Louis Lieberman
David & Rosalyn
Burnstein

Naman, Pollack, Block Youth Fund

In Memory of
Elizabeth Bohm
Morton Hurst
Randy & Elyse Block

Prayer Book Fund

In Memory of
Alexander F. Muller
Max & Charlene
Muller

Rabbi Glickman's Discretionary Fund

In Appreciation of
Beth Shalom Staff
Kenneth & Karen
Glickman
In Memory of
Morton Hurst
Ed & Rickie Haith
Robert Kalender
Frieda Mendell
Larry & Phyllis
Kalender
Donald Kopin
Clarence & Alice
Winer

Max Shapiro
Rita Shapiro

Rose Evelyn Sporn Primary Fund

In Memory of
James Kunellis
Inez Kaufman

Rose Family Early Childhood Education Center

In Honor of
Jean Zeldin's 70th
Birthday
Susie & Paul Blackman
In Memory of
Morton Hurst
Berenice & Roger
Haberman
Dr. Albert M. Pfeffer
Judith Hurwitz

Sanford Dunn Merit Scholarship Fund For Study

In Memory of
Richard Levitt
Daniel Dunn

Sylvan Siegler Scholarship Fund for Jewish Camping

In Memory of
Elizabeth Bohm
Morton Hurst
Merna Siegler

Vera & Herman Hershman Bar/Bat Mitzvah

In Honor of
Betty Hershman's
70th Birthday
Lenny & Elizabeth
Hershman
In Memory of
Morton Hurst
Lenny & Elizabeth
Hershman

Happy ♥ Anniversary

September Anniversaries will be celebrated on September 16.

To sponsor a Kiddush contact Jill, 913-647-7286.

Day		Years	Day		Years
1	Milton & Marjorie Adler	60	6	Lewis & Carol Berey	52
1	Steven & Stacy Brown	15	6	Scott & Debra Davis	30
1	Michael & Anne Jacobs	43	6	Michael & Miriam Farber	8
1	Frank Lipsman & Janet Mark	32	6	Abraham & Marlene Kopec	57
1	Jeffrey & Linda Sander	32	6	Jay & Erica Reich	8
1	Richard & Connie Simon	26	7	Daniel & Janna Rosenthal	14
2	Michael & Renana Abrams	27	8	Roman & Svetlana Sorkin	44
2	Neil & Alexis Miller	5	10	David & Amy Hersch	11
2	Eran & Yael Re'em	18	10	Michael & Samyra Marks	50
3	Seth & Robyn Freiden	11	10	Aaron & Jennifer Spiegel	16
3	Phillip & Barbara Hodes	50	11	Elliott & Katharine Hollub	57
3	Kurt & Stephanie Kavanaugh	28	12	Scott & Debra Goldstein	13
3	Larry & Linda Lessner	39	16	Tony & Kelly Shapiro	19
4	Joshua & Leah Langert	6	17	David Gale & Gina Kaiser	28
4	Sam Goller		19	Stan & Mary Weiner	47
	& Roberta Pollack-Goller	6	20	Richard & Lisa Hurst	25
4	Steven & Judith Sherry	57	20	Ronald & Kathy Schikevitz	25
4	Daniel & Sarah Stras	1	21	Simon & Janet Galapo	20
5	Joseph & Alyson Dieker	2	24	Stanley & Barbara Bodker	17
5	Allen & Gail Gutovitz	46	27	Leonard & Elizabeth Hershman	47
6	Gregory & Susan Azorsky	30	27	Max & Julie Soloman	17

Mazal Tov to...

Helen Rae Cerier on the birth of her great-grandson, Landon Michael Cerier. Parents are Michael & Lauren Cerier. Grandparent is Skip Cerier.

Alan Edelman & Debbie Sosland-Edelman on the birth of their Granddaughter. Parents are Ari & Katja Fine.

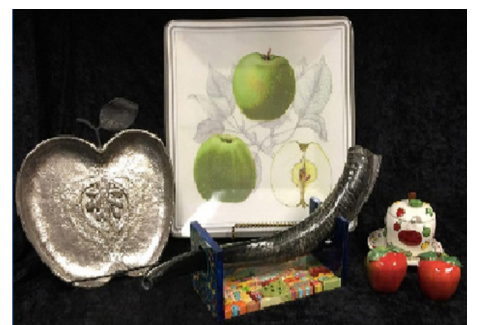
Jimmy & Sunni Rosenbloom on the birth of their Granddaughter. Parents are Michael & Neili Glotter.

Visit the Beth Shalom Sisterhood Gift Shop For All Your Judaica & Non-Judaica Needs

As we prepare for the High Holidays, we want to thank everyone for supporting Beth Shalom Sisterhood Gift Shop, a very important part of Sisterhood's annual income that supports our synagogue and Sisterhood programs, charities, etc.

Please drop by and view all the new items we're bringing in for the holidays, for hostess gifts, and our important Judaica gifts for Shabbat and other Jewish occasions.

Our hours during the school year remain the same, Monday-Thursday, 10:00 am-2:30 pm and Friday, 10:00 am-12:30 pm. Sunday hours are 9:30 am-12:30 pm. If these hours aren't convenient, please call Mary Weiner for an appointment at 913-642-9363 or 913-406-9296.



For Bar/Bat Mitzvah Registries, please call Tina Chapman at 913-345-8773. On September 10, we will have a table set up with merchandise for Sunday School parents to acquaint them with the Gift Shop. We will have a drawing for a \$20 gift certificate. We look forward to seeing you during the coming year.

Congregational-Wide Events - See each department for their activities

Sunday	Monday	Tuesday	Wednesday	Thursday	Friday	Saturday
					1	2 Auf Ruf of Brad Jacobs & Rachel Myers 8:28 Candle Lighting 10 Elul Havdalah Shavuah Tov!
3 No PRS Classes 12 Elul	4 Morning Minyan, 8:00 am at Village Shalom CBS Offices Closed No RFECEC 13 Elul	5 14 Elul	6 Warm Up America! PRS Classes for Grades 3-7 Resume 15 Elul	7 2018 Confirmation Class Meeting 7:00 pm - 8:00 pm 16 Elul	8 17 Elul	9 Birthday Shabbat Kiddush Corps Shabbat Shabbat Kids' Club Tot Shabbat 8:17 Candle Lighting 18 Elul Havdalah Shavuah Tov!
10 First Day of PRS Classes for Grades K-2 & 8-10 Jewish Culture Fest 11:00 am - 7:00 pm at the Jewish Community Center 19 Elul	11 CBS Board Meeting 20 Elul	12 SH Fall Membership Event 11:00 am - 2:00 pm Banishing Bullying Behavior 9:00 am - 12:00 pm 21 Elul	13 22 Elul	14 Back to Preschool Night 6:30 pm - 8:00 pm 23 Elul	15 LTI (KCUSY) 24 Elul	16 Anniversary Shabbat LTI (KCUSY) Parashat Hashavua 8:06 Candle Lighting 25 Elul Havdalah Shavuah Tov!
17 Tiberius Klausner Concerto Competition 3:00 pm - 5:00 pm LTI (KCUSY) 26 Elul	18 27 Elul	19 28 Elul	20 No RFECEC Offices Close at Noon No PRS Classes 6:59 Candle Lighting 29 Elul	21 For High Holiday Services & Programming, See Page 1 1 Tishrei 7:58 Candle Lighting	22 For High Holiday Services & Programming, See Page 1 2 Tishrei 6:56 Candle Lighting	23 For Shabbat Services, See Page 1 *Please Note: All Services will be held at the Jewish Community Campus* 7:54 Candle Lighting 3 Tishrei Havdalah Shavuah Tov!
24 PRS Classes Resume Mt. Carmel Memorial Service 1:00 pm at the Yukon Chapel 4 Tishrei	25 5 Tishrei	26 6 Tishrei	27 7 Tishrei	28 Erev Yom Kippur Offices Close at Noon For High Holiday Services & Programming, See Page 1 9 Tishrei 6:45 Candle Lighting	29 Yom Kippur For High Holiday Services & Programming, See Page 1 *Please Note: All Services will be held at the Jewish Community Campus* 7:43 Candle Lighting 10 Tishrei Havdalah Shavuah Tov!	30

Candle Lighting Blessing

ברוך אתה ה' אלקינו מלך העולם אשר קדשנו במצותיו וצונו להדליק נר של שבת.

Barukh ata Adonai Eloheinu melekh ha'olam, asher kideshanu b'mitzvotav vetzivanu lehadlik ner shel Shabbat.

September Service Schedule Shabbat CBS

Weekdays

Minchah:

Sunday-Thursday

6 pm

Shacharit:

Monday-Friday

7 am

Kabbalat Shabbat:

Main Service:

Library Minyan:

Minchah:

Minchah:

Minchah:

Minchah:

Minchah:

Shacharit:

Friday

Saturday

Saturday

September 2

September 9

September 16

September 23

September 30

Sunday

6:00 pm

9:30 am

9:30 am

7:29 pm

7:18 pm

7:07 pm

6:56 pm

6:45 pm

8:00 am



Shabbat Services and Sunday morning Shacharit will be held at CBS, 14200 Lamar.

Weekday Minyan will be held at Appleman Synagogue, Village Shalom, 5500 W. 123rd St.

*Please Note: On Tuesday, Wednesday and Fridays, Ohev Sholom will join us for the Morning Minyan.



Congregation Beth Shalom

14200 Lamar • Overland Park, KS 66223

www.bethshalomkc.org

Office: 913-647-7279 • Fax: 913-647-7277

CONGREGATION Beth Shalom

David M. Glickman, *Senior Rabbi*

Hazzan Tahl Ben-Yehuda,

Director of Congregational Learning

Bernie Fried, *Executive Director*

Alan L. Cohen, *Rabbi Emeritus*

Judy Jacks Berman, *Director, RFEC*

Richard Simon, *President*

Dahlia Berger, *Scroll Design*

The Congregation Beth Shalom Scroll (USPS531-420) is published monthly by Congregation Beth Shalom, 14200 Lamar Ave., Overland Park, KS 66223. Annual Subscription \$24.00. Periodical Postage Paid in Kansas City, MO. **DATED MATERIAL**

POSTMASTER: Send address changes to CONGREGATION BETH SHALOM SCROLL, 14200 Lamar, Overland Park, KS 66223. Scroll Deadline: The 1st of the previous month. Submit articles to the Administrative office before the deadline.

Congregation Beth Shalom, an egalitarian Conservative synagogue, is a welcoming community of individuals from diverse backgrounds, strengthening connections with God, Torah and the Jewish people through communal commitment to prayer, study and acts of loving kindness.

Coming Attractions:

Scroll Deadline:
September 6 for October

No PRS Classes
October 1, 4, 11

Erev Sukkot, Offices Close at Noon
October 4

Offices Closed for Sukkot
October 5 & 6

Offices Close at Noon
October 11

Offices Closed for Shemini Atzeret
& Simchat Torah
October 12 & 13

Office Hours:

Monday - Thursday
8:30 am - 5 pm
Friday 8:30 am - 3 pm
Closed on Federal Holidays

Mt. Carmel Cemetery Hours:

Monday, Wednesday 8 am - 4:30 pm
Tuesday, Thursday Closed
Saturday Closed
Friday & Sunday 8 am - 4 pm
National Holidays 9 am - 4 pm
*Exceptions: Thanksgiving,
Christmas Day, New Year's Day & Easter*
Jewish Holidays Closed
Phone: 816-398-9290

Sisterhood Gift Shop Hours:

Regular Hours
Monday - Thursday, 10 am - 2:30 pm
Friday, 10 am - 12:30 pm
Sunday, 9:30 am - 12:30 pm
During Business Hours, 913-647-7298
Other Hours by Appointment Only,
Call Mary Weiner at
913-642-9363 or 913-406-96
For B'nei Mitzvah Registries call
Tina Chapman at 913-345-8773

Parashat HaShavua

Parashat HaShavua is an ongoing, monthly program taking place every third Shabbat of the month at 9:00 am in the conference room. The goal of this program is to engage its participants in a stimulating discussion of the weekly torah portion in a friendly

atmosphere, where the difference of opinions is respected and questions are encouraged.

The next session will take place on September 16, when Parashat *Nitzavim-Vayeilech* will be discussed. An informal atmosphere and deep level

of discussion are the trademarks of this gathering. No prior experience is required, and everybody is welcome to join.

For more information, contact Svetlana Sorkin at 913-393-1715 or saraliorasedu@hotmail.com.