

2017 High Holiday Schedule

All services will be held at the JCC Campus except for Tashlikh

Erev Rosh HaShanah – Wednesday, September 20

6:30 pm White Theatre

1st day of Rosh HaShanah – Thursday, September 21

8:30 am Traditional Service White Theatre
with Rabbi Glickman & Hazzan Ben-Yehuda

8:30 am K-2nd Grade Programming CDC Common Area

8:30 am 3rd-5th Grade Programming ASK Room

9:00 am Family Service, ages infant-Pre-K Chapel

9:30 am Social Hall Service Social Hall

10:00 am Social Hall D'var Torah Social Hall

10:15 am 3rd-5th Grade Service Chapel

11:00 am Traditional Service D'var Torah White Theater

11:15 am K-2nd Grade Service Chapel

4:00 pm *Community Tashlikh Service

Park/Bridge behind Leawood City Hall
4800 Town Center Drive Leawood, KS

6:00 pm Minchah/Ma'ariv Service Social Hall

Candle lighting will be after 8:00 pm

2nd day of Rosh HaShanah – Friday, September 22

8:30 am Traditional service White Theater

8:30 am K-5th Grade Programming ASK Room

9:00 am Family service – ages infant-Pre-K Chapel

10:30 am K-5th Grade Service Chapel

10:00 am Rimom Service Social Hall

with Rabbi Glickman & Hazzan Ben-Yehuda

11:30 am Traditional Service D'var Torah White Theatre

6:00 pm Minchah/Erev Shabbat Services Social Hall

Shabbat Saturday – September 23

9:30 am Shabbat Services Social Hall

9:30 am Library Minyan Chapel (2nd floor)

6:56 pm Minchah/Ma'ariv/Havdalah Social Hall

Erev Yom Kippur – Friday, September 29

6:30 Minchah/Kol Nidre/Kabbalat Shabbat White Theater

Please plan on arriving early to ensure timely seating.

Yom Kippur – Saturday, September 30

8:30 am Traditional Service White Theatre

with Rabbi Glickman & Hazzan Ben-Yehuda

8:30 am K-2nd grade programming CDC Common Area

8:30 am 3rd-5th Grade Programming ASK Room

9:00 am Family Service, ages infant-Pre-K Chapel

9:30 am Social Hall Service Social Hall

10:00 am D'var Torah & Yizkor service Social Hall

10:15 am 3rd-5th Grade Service Chapel

11:00 am D'var Torah & Yizkor Service White Theatre

Yom Kippur Afternoon Learning Sessions TBD

11:15 am K-2nd Grade Service Chapel

4:35 pm Minchah/Ne'ilah/Ma'ariv White Theater

7:35 pm Sounding of the Shofar & Havdalah White Theater

**Please Note: Youth & Childcare Programming will conclude 10 minutes following the end of adult services.*

*If your child will be staying past noon, please send a kosher dairy lunch.**

High Holiday Appeal 2017

We need everyone to support the 2017 High Holiday Appeal! The annual appeal is a vital part of our financial plan and is crucial to maintaining our present level of programming and the support services CBS provides. We ask everyone to give based on their financial ability. By giving to the appeal, you are performing a mitzvah, and you are investing in your congregation. If you have not previously given, please make a pledge this year. If you gave last year, consider increasing your contribution to help offset the impact of inflation on our budget.

Donations may be made in one of the following ways:

- 1) Send in the bottom portion of the High Holiday Appeal letter that will be mailed to you soon.
- 2) Donate online at www.bethshalomkc.org.
- 3) Place a sticker on your High Holiday ticket indicating your pledge and give it to one of our designated "Appeal Collectors" during Yom Kippur services.

Thank you in advance for supporting the 2017 High Holiday Appeal. For more information or questions, contact Ernie or Susan Rosenthal, High Holiday Appeal Chairs, at ErnieRos@yahoo.com or 913-491-8924.



2017 Security & Parking

Each year, we must be diligent with our security procedures to ensure a safe environment for our congregants. There will be a very obvious police presence at the JCC during all services. There will be no admission without a ticket. If you do not carry



during the holidays, please check in at the door with one of our staff who will have a list of everyone who has been mailed

2017 Ticket Policy

- All members in good standing will receive tickets by mail. Your children under age 25 are free and do not require a ticket when attending services with you.
- Guest tickets are available on-line at \$175 each and will be mailed to either you or your guest, whichever you indicate.
- If your account is in arrears, please contact our bookkeeper, Pam Fite at

913-647-7271 to arrange a payment plan. If this is not feasible, please contact Bernie Fried at 913-647-7293. It is our mission for all congregants to be able to attend services irrespective of their financial situation as long as you contact Bernie before the holidays.

- Reciprocal Guest Tickets are available for those belonging to another Conservative Synagogue. Their home

High Holiday tickets.

The JCC is closed for all other activities on the High Holidays, and all available parking spaces, with the exception of the area reserved for Pillar parking, may be used. The Sprint garages may not be used.

synagogue must order the tickets for them. Guest ticket requests should be sent to Maggie Hultman at maggieh@bethshalomkc.org.

- For those who are not members, we have free Rimmon tickets to attend this service and free young family service tickets. Family services begin at 9:00 am and tickets must be picked up at the front desk of the Pre-School prior to the holidays.

Congregational Calendar Available at Rosh HaShanah Services

The 2017-18 congregational calendar/directory, a project of our Sisterhood, will be distributed on the first day of Rosh HaShanah, Thursday, September 21, outside both the White Theater and the Social Hall at the JCC as you leave services. **Please redeem your calen-**

dar with the special calendar ticket included with your services tickets.



If you are unable to pick up your calendar at this time, it will be mailed between the end of Rosh HaShanah and Yom Kippur. Sisterhood thanks you for helping save on mailing costs.

High Holiday Honors for 5778 (2017)

If you would like to receive an honor for Rosh HaShanah or Yom Kippur, there are two ways to accomplish this. Please read carefully:

Plan 1- Congregants are welcome to log on to our website at <http://bethshalomkc.org/2-ritual/hh-high-holiday-honors/> and fill out the form requesting an honor.

An email will be mailed to you confirming your request.

Plan 2- Officers, board members and other volunteers will be calling congregants who celebrated a special

occasion in the past year such as a 50th wedding anniversary, a Bar or Bat Mitzvah or a special birthday. They will be offering those celebrants an aliyah in honor of those occasions. If you celebrated a special simcha and do not want to wait for a call, feel free to contact Jill at jgoldstein@bethshalomkc.org or go to Plan 1.

Honors include Torah aliyot, ark openings/closings, English readings and carrying the Torah in either the processional or recessional. Questions, contact Jill at the above email address.

Mt. Carmel Memorial Service

Our annual Mt. Carmel Cemetery High Holiday Memorial Service will be held Sunday, September 24, at 1:00 pm in the Yukon Chapel.

There will be time for visiting the graves of our loved ones following the service, and our caretakers, Jim and



Bob, will be available to direct you to the gravesites you may wish to visit. Our tradition teaches us about the merit of praying by the graves of our loved ones, and we honor the beautiful custom of coming together for prayer, reflection and grave visitation during the High Holiday season.

For further information, contact Trinity at 913-647-7281.

Selichot Helps Prepare Us for the High Holidays

The community-wide Selichot program and service will take place on Saturday night, September 16, at Congregation Beth Torah. The evening will begin with a dessert reception at 8:00 pm followed by Havdalah at 8:45 pm. A creative, interactive performance of “The Sarah Play” produced by Jon Adam Ross-JAR, a playwright and performer, will be presented at 9:00 pm. The play is part of the InHeiritage Project which explores modern interpretations of

Judaism’s patriarchs and matriarchs. This presentation is brought to Kansas City by the J’s Midwest Jewish Artists Laboratory.

The Selichot service will start at 10:10 pm and is designed to help worshippers begin to spiritually prepare for Rosh HaShanah and Yom Kippur by examining one’s deeds of the past year and directing one’s heart and mind to the process of *teshuvah* (repentance) and seeking forgiveness. The service will be led by area clergy

and musicians. Services will also be held at Kehilath Israel at 11:00 pm and at Beth Israel Abraham and Voliner at 1:10 am.

For more information, visit www.kcrabbis.org or contact Annette Fish, Rabbinical Association Administrator, afprogram@aol.com or 913-327-4622. The Rabbinical association of greater Kansas City sponsors the Selichot program with generous support from the Jewish Federation of Greater Kansas City.

Young Family Services



Linda Salvay will be leading the young family services once again for the High Holidays. The services will be in the chapel upstairs at the campus from 9:00 to 9:45am both days of Rosh Hashanah as well as Yom Kippur. Please call

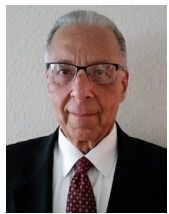
the preschool office with any questions, 913-647-7285.

Linda Salvay discovered her love of Jewish music as a teen at Camp Herzl and in USY. She has performed as both a soloist and as a member of musical groups Shir Ami in St. Louis, and the Chai Singers and Yachad—The Traveling Tefillah Band

in Kansas City. Her original compositions include a rendition of “Ani Ma-Amin” that was chosen from entries worldwide for inclusion in the eighth annual Chasidic Song Festival in Israel. Among her current musical endeavors, she enjoys Shabbat singing each week with preschoolers in the RFECEC.

Executively Speaking

Tomorrow Never Comes



Today is the tomorrow we worried about yesterday. We can remember yesterday; we can live for today. But, tomorrow is always beyond our reach. Never have I woken up and said: “It’s tomorrow”. Tomorrow never comes.

We have made so much progress over the past year, and as I begin a new two-year term as your Executive Director, I look forward to working with you to accomplish so much more. But nothing can be accomplished by putting it off until tomorrow.

We can set our goals for tomorrow, but we must begin our quest today.

We are so fortunate to have outstanding clergy in Rabbi Glickman and Hazzan Ben-Yehuda. They, coupled with our dedicated and talented staff, have made major contributions to enhancing our ritual, educational and operational needs.

But, there is so much more to be done. It is imperative that we continue to upgrade and enhance our security requirements to ensure the safety and security of our children, congregants and guests. We also need

to upgrade our network hardware and software to minimize chances of computer viruses and malware being introduced into our network, which could potentially cause a loss of data and expensive fixes.

In addition, I am hoping to upgrade our website to make it more user friendly and inviting for our congregants, potential members and donors.

Our work is never finished. We cannot wait until tomorrow to begin critical or on-going projects. There is no tomorrow. We must begin today.

Bernie Fried
Executive Director

From the Rabbi's Study

A Universalist's Defense of Judaism's Particularism



The Genius of Judaism by Bernard-Henri Lévy is an unusual book. It is not clearly philosophy, history nor autobiography. In some ways, it is a bit of all

three, and in some ways it is none of the above. I "read" this book half on a Kindle and half through its narrated audio book which is available on Audible.com. In some ways, I found the audiobook better, because it feels like a stream-of-consciousness monologue, and there were parts that were absolutely inspiring and made me examine Jewish identity in new ways. It had the emotional ring of hearing a really great speaker - or that favorite charismatic professor in college.

The first half of the book examines Judaism's unique features as a faith/religion/nation/people, and traces its uniqueness through history (with a welcome focus on French Jewish history). The second half is a long metaphorical analysis of the Biblical Book of Jonah, examining how Judaism's prophetic voice has encountered the various great societies. This sprawling exploration of Jonah, as a self-contained unit, would make excellent reading on Yom Kippur afternoon.

The biggest criticism, though, is the lack of focus. The same quality that makes sections a good listen on Audible.com, also makes it a totally

unwieldy book to read. It is less a book than it is numerous good thirty page essays in search of a decent editor. Alas, the author's formidable ego has trouble getting in its own way.

I was not familiar with Lévy before this book and had to do some internet research on his work to appreciate the significance of *The Genius of Judaism*. The author is a journalist, public thought leader and *bon vivant*. He has covered some of the most dangerous war zones of the second half of the twentieth century, and his presence at so many political revolutions informs his own love of Judaism. If you are not *au courant* in philosophy, journalism, history and film studies - you may want to read this book with a thesaurus and Wikipedia handy.

The Genius of Judaism is the work of a passionate advocate, admirer and autodidact. His inspiration is the great French-Jewish philosopher, Emmanuel Levinas. Though the book is hampered by the author's penchant for tangents, name dropping and the intellectual cul-de-sacs, Lévy's voice is also needed right now.

We have seen a resurgence of anti-Semitism on the Left and the Right. The American Jewish community is familiar with how to combat the anti-Semitism of organizations of the alt-right because it is reminiscent of Nazism and the KKK. We

have a harder time combatting the anti-Semitic language that has been coming from the left on campuses and in intellectual life. The places in universities where many Jews have felt at home are now hostile to Judaism and exclusionary of Zionism. Lévy is a dyed in the wool leftist who makes a compelling argument for why Judaism's uniqueness and focus in particularism actually forms individuals who can be more accepting of others and fighters against injustice. Lévy attacks all the different forms of Holocaust denial, and demonstrates how it was those who knew the Holocaust either first-hand or through study were the strongest voices against the later genocides of Cambodia and Darfur. He decimates the hierarchy of suffering that we see the intelligentsia squabble about, and shows how understanding your own history trains one to be more compassionate towards the suffering of others. It is a French, universalistic, leftist intellectual who can most effectively make the case for the uniqueness of Judaism, the case for deep study of our sacred texts and learning our own history.

David M. Glickman

Rabbi David M. Glickman
dglickman@bethshalomkc.org

Parashat HaShavua

Parashat HaShavua is an ongoing, monthly program taking place every third Shabbat of the month at 9:00 am in the conference room. The goal of this program is to engage its participants in a stimulating discussion of

the weekly torah portion in a friendly atmosphere, where the difference of opinions is respected and questions are encouraged.

The next session will take place on August 15, when Parashat *Re'eh* will be discussed. An informal atmosphere

and deep level of discussion are the trademarks of this gathering. No prior experience is required, and everybody is welcome to join.

For more information, contact Svetlana Sorkin at 913-393-1715 or saraliorasedu@hotmail.com.

Polsky Religious School

Hazzan Tahl Ben-Yehuda, Director of Congregational Learning | hazzantby@bethshalomkc.org

Jewish Education for All Our Members



One of the core values of CBS is Jewish Learning. As the Director of Congregational Learning, I have been responsible for the vision and administration of our synagogue's religious school. The past three years have seen exciting changes in our school; the Hebrew Lab brings 5th through 7th grade students together to learn to read and chant Hebrew in a fun, dynamic setting where each child progresses at his or her best pace. Tablet technology now enhances our curriculum thanks to a generous gift last year, and the Polsky Family

Foundation Grant has enabled us to build community through Shabbat and holiday meals where Jewish ritual is not just learned, but practiced and shared. In the coming year students, the Polsky grant sent to Songleader Bootcamp, will begin to work in our school, teaching songs and prayers to the youngest students.

Jewish Learning is a critical element of the Jewish experience not only for our children but for all our members. To that end, this year I will be offering at least two learning opportunities to our membership. First, there will be a Gabbai training class that will meet for two Sunday evenings in the

late Fall. This class will be a refresher for all current Gabbayim and a class to teach anyone who wishes to become a Gabbai the ins and outs of how to take on this Shabbat morning responsibility and honor. Second, there will be a class to teach how to chant Torah and/or Haftarah in the early spring. If you have ever wanted to chant Torah, or if you already know how to chant Torah but never learned how to chant Haftarah, this is the class for you.

I am looking forward to learning with you in the weeks, months and years to come!

Mark Your Calendars

August 20	PRS Open House at 1:00 pm
August 23	Hebrew Jump Start 3rd-7th 4:15-5:30 pm
August 27	Day of Discovery (an exciting interactive community program for school children)
August 30	Hebrew Jump Start 3rd-7th 4:15-5:30 pm

Religious School Open House

The Polsky Religious School will host an Open House in Library Reading area on Sunday, August 20, at 1:00 pm. Parents and students are invited to join us, hear about the

coming year from Hazzan Ben-Yehuda and meet our teachers. In addition, each teacher will be available to answer questions, provide an overview of his/her year's curriculum and hand out supply lists. While parents are vis-

iting with staff, students will have an opportunity to work at a craft table to begin making sukkah decorations. The afternoon will end with a light snack. For more information, contact the school office at 913-647-7286.

B'nei Mitzvah Parents' Meeting

Parents of B'nei Mitzvah students with dates from August, 2018 through June, 2019 as well as parents of students entering 6th grade, are invited to attend a B'nei Mitzvah Seminar at 7:00 pm, Sunday evening, August 13, in the Conference Room.

Information regarding 6th grade programming, B'nei Mitzvah requirements, tutoring, use of facilities and financial obligations will be discussed. In addition, Bar/Bat Mitzvah binders will be distributed. Staff members from various areas of the congregation

will be present to answer questions regarding the preparation for your child's upcoming simcha.

Please contact Jill Goldstein, Ritual/Religious School Coordinator, at 913-647-7286 for further information or to make your reservation for the meeting.

Mazal Tov to...



Vicki and Michael Diamond announce the engagement of their daughter Emily Diamond to Isaac Goldman. Isaac's parents are BJ and Simon Goldman.



Sisterhood

Carol Yarmo, President | shpres@bethshalomkc.org |

PrayerWorks Celebrates Its 20th Anniversary

PrayerWorks will celebrate its 20th anniversary at a PrayerWorks Shabbat on August 26, at CBS. Services begin at 9:30 am. Nata Scharf is chair of the event.

Spirituality in Judaism has been around for thousands of years. Recitation of psalms and prayers on behalf of the sick are part of the Jewish faith. There are groups that offer prayers for the sick throughout the world. Our Sisterhood offers such a group called "PrayerWorks". The group meets once a month from 10:00 - 11:30 am at CBS, on the fourth Wednesday of the month throughout the year and is open to the community. Some months the sessions are held at Village Shalom. PrayerWorks has been used as a model for other groups throughout the country.

The group is composed of dedicated and committed women and men who believe in the power of collective prayer for those in need of physical, emotional or spiritual healing. Relaxation, meditation and prayer are used during



the session.

PrayerWorks began November 1997 with input from Rabbi Alan Cohen and Rabbi Morris Margolies, z"l. Six founding members remain active; Judy Bell, Anne Bratt, Gertie Epstein, Joan March, Janet Price, and Rickie Haith, facilitator

and chairman.

PrayerWorks has received several awards, including one from International Women's League for Conservative Judaism. Haith has led a Healing Service at an International Women's League Convention and has conducted Healing Services throughout the country.

For information or to leave a name of someone in need of physical, spiritual, or emotional healing, call 913-341-8707, Rickie Haith, facilitator & chairman. All names are left on the prayer list a minimum of 3 months unless notified. A PrayerWorks at Home cassette or CD and a PrayerWorks booklet are available at no charge.

Chayei Olam Torah Fund Campaign



The annual Chayei Olam Torah Fund Campaign begins this month. The levels of giving are Chayei Olam (\$180), Guardian (\$300),

Associate Patron (\$600) and Patron (\$1,200). Women's League's gift to all who donate at the \$180 level or above is a beautiful silver and gold pin/pendant featuring the number 100

in raised silver numerals celebrating the 100th year of the Women's League for Conservative Judaism. The inscription in gold is Mah Tov from Numbers 24:5 which is sung when we enter the synagogue. The theme of Mah Tov is an expression of our appreciation for being able to come together to worship as a community.

For 75 years the Torah Fund has helped to support the students at the Jewish Theological Seminary, Ziegler School of Rabbinic Studies, Schechter

Institute of Jewish Studies, Seminario Rabbinico Latino-Americano and Zacharias Frankel College. Let's work together to make sure, through our donations, that these universities can continue to educate our future Jewish Conservative clergy, scholars, educators and leaders.

For more information, contact Berenice Haberman, bshaberman521@gmail.com, 913-940-4911 or Rhea Salasche, rheasher@aol.com, or 913-859-0530.

New and Prospective Sisterhood Member Event

New and prospective Sisterhood members mark your calendars for a creative bash at Paint, Glaze and Fire Ceramics and Coffee House in Overland Park, on Tuesday, August 22 from 6:00-8:00 pm. Wine and hors d'oeuvres will be served. Studio

fee is \$4 plus the cost of any item you choose to paint. There are many Judaic or other items under \$20.

If you bring a used cell phone to donate to charity, you will receive a 25% discount on one item.

Pay your Sisterhood dues of \$36

for 2017-18 at the event, and your name will be placed in a drawing at the end of the evening for a prize.

Watch for your invitation! Space is limited. Please RSVP by Monday, August 14 to Wendy Malyn at 816-582-4734 or wmalyn@everestkc.net.

Sisterhood

Carol Yarmo, President | shpres@bethshalomkc.org |

Sisterhood Presents: Change is a Part of Life



Sisterhood's annual Fall luncheon welcoming all members to a new year of exciting programs will be held on September 12, at 11:30 am in Goldsmith Hall. The cost for the luncheon will be \$15 for members and \$20 for guests.

Debra Orbuch Grayson, a Licensed Clinical & Family Therapist, will be our dynamic guest speaker. Debra will facilitate an interactive discussion about life changes and how we adapt to them. We all face change no matter what our age is, and attitude and coping skills play important roles in adapting to change. To quote Heraclitus, a Greek Philosopher, "The only thing that is constant is change".

Debra and her family moved here about a year ago and are new members of CBS. She has been in practice for over 30 years and holds a BS degree from the University of Wisconsin, Madison and an MS from the University of Maryland College Park.

Invitations will be coming soon. Attendees are requested to bring sample or new personal care items and cosmetic bags to be used for holiday gifts for clients of Jewish Family Services.

For more information, please contact Wendy Malyn 816-582-4734, wmalyn@everestkc.net or Ellen Soltz 913-766-0274, ellensoltz@gmail.com. This event has been partially subsidized by the Snitz Sisters Memorial Fund.

Sisterhood Gift Shop

Mary Weiner | 913-647-7298 |

As we start to get our TO DO LIST together for Fall - add Beth Shalom Sisterhood Gift Shop to your list.

We have unique Judaica items for the High Holidays: Rosh Hashanah honey containers, apple platters, challah trays, "hostess gifts" to name a few items.

Support OUR Gift Shop and visit with our knowledgeable staff for more ideas!



Instructions:

Preheat Oven to 425°F. Line a rimmed baking sheet with parchment paper. Place salmon skin-side down, brush with olive oil and season with garlic salt and black pepper (to taste). Bake uncovered for 10-15 min or just until cooked through. Remove from oven, cover with foil and rest ten minutes. Discard skin, flake salmon with fork, remove any bones, and cool to room temp.

Heat a medium sized skillet over medium heat. Add 1 Tbsp olive oil, 1 Tbsp butter and finely diced onion and bell pepper.

Ingredients

- 1 lb fresh salmon filet*
- Garlic Salt
- Black Pepper
- Olive Oil
- 1 medium onion (1 cup finely diced)
- ½ red bell pepper, diced
- 3 Tbsp unsalted butter, divided
- 1 cup Panko bread crumbs (Japanese Style crumbs)
- 2 large eggs, lightly beaten
- 3 Tbsp mayo
- 1 tsp Worcestershire sauce
- ¼ cup minced fresh parsley



Salmon Cakes (Patties)

Saute until softened and golden (7-9 minutes) then remove from heat.

In a large mixing bowl, combine cooled flaked salmon, sautéed onion and pepper, 1 cup bread crumbs, 2 beaten eggs, 3 Tbsp mayo, 1 tsp Worcestershire sauce, 1 tsp garlic salt, ¼ tsp black pepper, and ¼ cup fresh parsley. Stir to combine and then form into 13-14 1/3 to ½ inch patties.

Heat 1 Tbsp oil and 1 Tbsp butter in a large pan over medium heat and once butter is done sizzling, add half of the salmon cakes and sauté 3½ to 4 min per side or until golden brown and cooked through. If salmon cakes brown too quickly, reduce heat. Remove to a paper-towel lined plate. Add remaining 1 Tbsp oil and 1 Tbsp butter and repeat cooking remaining salmon cakes.

*Note: Fresh salmon is best, but it can be substituted with leftover cooked salmon or 14-15 oz of well-drained canned salmon. If mixture is too moist to hold the patty shape, add more bread crumbs and if it is too dry, add an extra tablespoon of mayo.

Of Blessed Memory

We express condolences to our Beth Shalom Members, their Families and Friends.

Edith Markowitz, z"l, July 8 - 14 Tammuz

Elizabeth Bohm, z"l, July 15 - 21 Tammuz

Morton Hurst, z"l, July 15 - 21 Tammuz

Donald Kopin, z"l, July 20 - 26 Tammuz

Unveilings On September 3

Debby Cortés

September 3 at 10:30 am
at Rose Hill Cemetery

Miriam Schwartz

September 3 at 11:00 am
at Mt Carmel Cemetery

Goldie Riss

September 3 at 12:00 pm
at Mt Carmel Cemetery

Plaques Have Been Dedicated In Memory Of...

Yahrtzeits

Join us for morning or evening minyan to say Kaddish for your loved one. See service schedule, page 11.

9 Av - Aug. 1

Alvin Arenson
Allan Birman
Betty Birman
Bessie Bordman
Mary Chernikoff
Mordecai Crosner
Rosa Crosner
Barbara Enslein
Rebecca R. Furman
Bessie Goldberg
Jennie Himmel
Anna Hoffman
Henshen Keller
David Leibtag
Emma Loeffler
Siegfried Loeffler
William Peltzman
Mitchel Rose
Anna Tempofsky
Pauline Yaskolka

10 Av - Aug. 2

Melvin E. Beyer
Sarah Golding
Neil F. Miller
Jennie Millman
Mendel Oshry
Clara Rothblatt
Esther Shapiro

11 Av - Aug. 3

Alfred Aron
Morris Balot
Ida Baron
Barney Cinnamon
Abraham Cohen
Sophia Cohn
Rae Dloogoff
Jacob Goldstein
Ida Z. Joseph
Richard L. Josephson
Louis Kiansky
Esther Lesser
Charlotte S. Margolin
Meyer Peltzman
Sarah Scrinopskie
Ethel Seider
Charlotte M. Shafon
Philip Wang

12 Av - Aug. 4

Toby Chemel
Ida Frank
Dorothy Glass
Dora Gold
Nathan S. Goldberg
Serena Hammer
Anna Horowitz

Samuel Isaak
Phillip Katz
Hyman J. Levi
Hyman Rosen
Ben Solomon

13 Av - Aug. 5

Rebecca Barash
Bessie Brenner
Samuel J. Brown
Sigmund Dollman
Rose Gould
Jack Kahn
Harry Levy
Jennie Marks
Isaac Sackin
Harris Segelbohm
Samuel Spector
Ruth Unger
Evelyn Yodler

14 Av - Aug. 6

Norma Bush
Abraham Dorfman
Rebecca Greenstein
Abe J. Kaplan
Minnie Rafael
Kreine Shankman
Henry Sosland

15 Av - Aug. 7

Robert R. Bernstein
Sarah T. Freshman
Samuel L. Greenberg
Rose Hyman
Benjamin Katz
Frieda Shanberg
David Steinberg
Sadie Tonopolsky

16 Av - Aug. 8

Annette Glaser
Sigmund Gundle
Freida Mendell
Abraham Sidley
Benjamin Silverman
Roni Smith
Louis J. Weintraub

17 Av - Aug. 9

Rebecca Berman
Ethel H. Cohn
Abe Eisen
Louis H. Forman
Jacob Jagoda
Bess Merse
Lena Morris
Rubin Moskovitz
Joel Polsky
Lewis L. Sofnas

Sarah Wang

18 Av - Aug. 10

Daniel Aranoff
Pola Baum
Marie Bell
Aaron Bloustine
Hyman Brand
Sylvia Bromberg
Benjamin Gastman
Kathleen Gelpman
Peltzman
Lillie Lefkovits
Gladys L. Normand
Sidney Osur
Jacob J. Taxman
Sarah Waxenberg
Alex A. Wedlansky
Aaron Ziman

19 Av - Aug. 11

Samuel Baum
Norma Cinnamon
Maurice M. Dubinsky
Ruth Milgram Eisberg
Meyer Gordon
Anna Halle
Jack Kay
Rachel Levinson
Ruthye Nowick
Sarah I. Rose

20 Av - Aug. 12

Bernadine Benjamin
Donna J. Cohen
Frank M. Coleman
Esther P. Dubinsky
Esther Duni
Bess Ginsberg
Essie Goodman
Max Hecht
Joseph Klein
Sam Lustig
Simon Navran
Sam Pasmanik
Sarah M. Schere
Abe Schuman
Goldy Siegel

21 Av - Aug. 13

Pesyl Brand
I.J. Cohen
Mollie Dashiell
Jack Denowitz
Anna B. Godock
Edith Goldstein
Reuben Kantor
Jacob Levinson
Sarah Siegel

22 Av - Aug. 14

Charles Bass
Louis Donovitz
Robert H. Fichman
Maurice Loeffler
Jacob Max
Esther Millstein
Clara Ommerman-
Gilgus
Harriet Schoket
Samuel Sukon
Rosa Witschner

23 Av - Aug. 15

Richard Biederman
Sherman Cohen
Ed S. Michelson
Alana Morris
Louis Pinsky
Harry Robinson
Sam Rosen
Morris M. Ruback
Jacob Rubin
Joseph Schlosberg
Hortense Stern

24 Av - Aug. 16

Frances Franks
Libbie Goldberg
Reuben Josephson
Max Lerer
Rena A. Rosenberg
Philip Rosenblatt
Abraham L. Snyder
Hymie J. Sosland
John Spitaufsky
Gedaliah Vigder

25 Av - Aug. 17

Yoheved Flekier
Max Gluck
Emilie Isaak
Philip L. Levi
Emanuel Reichman
Frances Sandler
Samuel S. Shapiro
Marilyn Wasserman
Allen S. Yukon

26 Av - Aug. 18

Edith Bell
Nathan Peltzman
Abe Sander

27 Av - Aug. 19

Ida Cohen
Samuel Cohen
Nathan Dreiseszun
Abraham S. Goodman
Louis Grace

Louis H. Karosen
Joe Lipsky
Beatrice B. Wilk
Anna Winett

28 Av - Aug. 20

Etta Bayzman
Philip J. Cohen
Fannie Friedman
Rebecca Glassman
Moishe I. Kamar
Paulina Muller
Fanny Shlemovitz

29 Av - Aug. 21

George Deiboch
Harry Dubinsky
Ben Goldstein
Israel C. Kamber
Ada Karosen
Rebecca Lieberman
Abe Markus
Abe Radetsky
Pro Sherman
Charles S. Smith
Mollie Spector
Samuel Summers

30 Av - Aug. 22

Reline Eisemann
Anna Greenberg
Sam Horwitz
Theodore Kort
Jake Lazarus
Philip Lieberman
Joe Posner
Stanley D. Rostov
William Schoen
Sol Segal
Celia Spicer
Harry Teiblum

1 Elul - Aug. 23

Louis Blond
Rose B. Denowitz
Fred Einhorn
Fannie Fish
Kenneth Fox
Albert Garfinkel
Jack Gersh
Tiby Gilbert
Esther Gilgus
A. Jacobson
Henrietta Katzman
Jacob Langner
Eva Laman
Goldie Riss
Israel Rocher
Jacob Tulchinsky

Sharon H. Weinstein
Brian R. Yodler

2 Elul - Aug. 24

Bess G. Byers
Edward Cohn
Reubin Katz
Rose Kaufman
Ellis Kraft
Meyer Minkin
Lottie Nodiff Leavitt
Jean T. Parmet
Morris Sanell
Josef Segelbohm
Samuel I. Simon
Anna Wedlan

3 Elul - Aug. 25

Joseph Brenner
Charlotte Chernikoff
Serena Eisman
Serena E. Grinpas
Jack Klein
Jack Lesser
Sonia Mendelsohn
Elk Peltzman
Louis Rosenblatt
Harry Abe Rosenblum

4 Elul - Aug. 26

Myrl Cohen
Sam Cohen
Bessie Eichenberg
Beatrice Fogel
Abraham Goldberg
Slava Goldberg
Menia Levitch
Adolph Lipsey
Rosa Rosenblum
Ida Stein
Lena Stein
Ernest Wasserstrom

5 Elul - Aug. 27

Louis Adreme
Harry Dean
Ruth L. Katz
Israel Raskin
Sam Rosenberg
Morris Stern
Paul Vigder

6 Elul - Aug. 28

Rebecca Agron
Harry Byer
Sam Fishman
Rachel L. Hyman
Felix Jarus
Max Mindell
Simon E. Rothenberg

Nathan Samuels
Sarah Z. Sandhaus
Hyman Schere
Eva Schwartz
Eva E. Weintraub
Sarah B. White

7 Elul - Aug. 29

Mordechai Berenbom
H. Deacon Cohen
Irving A. Cohen
Bernard Copeland
Sam Davis
Ida Gershon
Marian B. Gibbs
Kate Goldman
Jeanette K. Hoffman
Anna Jacobs
Minnie V. Katz
Fannie Kaufman
Ida Kaufman
Sarah Labowitz
Elaine Lewin
Abe Walters
Toby E. Weiss

8 Elul - Aug. 30

Hanna F. Achtenberg
Anna Dantzig
Esther Goldstein
Rae G. Jacobs
Esther Z. Kaplan
Sally Klutz
Samuel Levine
Leonard Levinson
Balfour A. Lieber
Ben Millstein
Morris Minkin
Irving Nasaw
Sophie Samuels

9 Elul - Aug. 31

Ena Bush
Jordan Cohen
Gloria Cohn
Ronah W. Epstein
Morris Z. Goldblatt
Arthur Karbank
Bessie Kupperstein
Fanny Noah
Bennett B. Shapiro
Kip J. Weiner

Ada Hoffman Camp Ramah Scholarship Fund

In Memory of
Howard Levitan
Kurt & Stephanie
Kavanaugh

Ann & Isadore Gale Scholarship Fund

In Memory of
Rita Galiskaya
Roman & Svetlana
Sorkin

Benjamin Ryweck Torah Fund

In Honor of
Hazzan Tahl
Ben-Yehuda's
Birthday
Abby Sosnow's
Bat Mitzvah
Joan March
In Memory of
Howard Levitan
Abe Meth
Joan March
Joel Vile
Anne Bratt
Joan March
David Wallk
Anne Bratt

Beth Shalom General Fund

In Appreciation of
Judy Jacks Berman
& RFECEC Staff
Vlada Binshtok
In Honor of
Berenice Haberman's
Birthday
Merle Cole
Joel Pelofsky's
80th Birthday
Richard & Barbara
Atlas
Bernie & Ella Ullman
Marvin Szneler's
Birthday
Howard & Cherice
Gerson
In Memory of
Max Bergmann
Albert Bamberger
Elizabeth Bohm
Elliott & Kathy
Hollub
Dora Friszman
Alisha Scott
Bess Gale
Carl Gale
Morton Hurst
Gertie Millstein
Steven & Sherri
Newstead

Dorothea Jagoda
I.I. Ozar
Sol Kopitnik
Shirley Malashock
Arlene Levine
Sam & Danielle
Levine
Fannie Mae Marder
Henry Marder
Lina Neustein
Frieda Soble
Bev Newman's Aunt
Barry Spector
Berenice & Roger
Haberman
Sidney F. Pakula, MD
Lawrence Pakula
Harry Jacob Prebluda
Jonathan & Ellen
Chilton
Golda Rosen
Nathan Rosen
Inge B. Silverman
Craig & Amy Both
Robert Tonkens
Ross Tonkens
Joel Vile
Richard & Barbara
Atlas
Blossom Block
& Phil Lichtenberg
Harriett Charno
Gus & Elinor
Eisemann
Arthur & Diane
Federman
Howard & Cherice
Gerson
Marvin & Adelle
Goldstein
Dave & Judy Jacobs
Kurt & Stephanie
Kavanaugh
Dee & Joyce Pack
Sam Goller & Roberta
Pollack Goller
Marvin Szneler
Joe & Fran Wolf
Rabbi Michael
& Karen Zedek
Rose Zurovsky
Gert Epstein

George & Esther Nowick Scholarship Fund

In Memory of
Esther Nowick
William Nowick
George Nowick
Manuel Nowick
Hanan Wedlan
Family Fund
In Memory of
Mary Ann Mour
Ida Wedlan
Mitch & Lisa
Hamburg and Family

Harry & Anita Daniels Camp Ramah Scholarship Fund

In Memory of
Max Kopin
Clarence & Alice
Winer

Harry Puritz Scholarship Fund

In Memory of
Fanny Puritz
Carl Puritz

Hazzan Ben-Yehuda's Discretionary Fund

In Memory of
Leonard Bayzman
Steve & Marcia Schorr

Jacob & Rose Szneler Scholarship Fund

In Honor of
Dr. Melvin & Elaine
Glazer's New Home
Marvin Szneler
In Memory of
Rose Szneler
Jacob Szneler
Marvin Szneler

Jacob H & Rose Levine Teacher Development Fund

In Memory of
Morton Hurst
Peter & Bev Newman

Karbank Fund

In Memory of
Joel Vile
Joseph Smuckler
& Marcia Karbank

Kiddush Fund

In Honor of
Barbara S. Katz's
80th Birthday
Harold Kaseff
& Rhea Salasche
In Memory of
Max Kopin
Barbara Goldstein

Marcia Eveloff Lechem Fund

In Honor of
Al Beitchman's 80th
Birthday
Milton &

Marilyn Ozar's 70th Wedding Anniversary Bernard & Barbara Birnbbaum

In Memory of
Sadye Lerner
Alan & Tina Chapman
Rae Lieberman
David & Rosalyn
Burnstein
Joel Vile
Judy Krug
David Wallk
Jimmy & Sunni
Rosenbloom

Marcus Brand Scholarship Fund

In Memory of
Dorothea Jagoda
Milton & Marilyn
Ozar

Meyer J Pachter Video Library

In Memory of
Meyer Pachter
Regina Pachter

Morris & Rose Weinberg Endowment Fund for Camp Shabbat

In Appreciation of
Stan Samberg
Steve Weinberg
& Lauren Weinberg

In Honor of
Rita Cortés Reading
the Entire Torah
Steve Weinberg
& Lauren Weinberg

In Memory of
Joel Vile
Judith Weinberg
Steve Weinberg
& Lauren Weinberg

Naman, Pollack, Block Youth Fund

In Memory of
Jay Pollack
Randy & Elyse Block

Polsky Religious School Fund

In Memory of
Dorothea Jagoda
Steven Jagoda
& Family

Prayer Book Fund

In Memory of
Anna Glaser
Joseph C. Glaser
Sharyn Burnstein

Rabbi Glickman's Discretionary Fund

In Memory of
Jane A. Klaiber
Steve Feinstein
Nathan Reiz
Andy & Zelda Reiz
Joel Vile
David Gale
& Gina Kaiser
Ron & Susie
Goldsmith
Howard & Lynda
Hirsekorn
Marcelle Kaiser
Stewart & Esther Stein

Romotsky, Price, Cortés Genetic Testing Fund

In Honor of
Rita Cortés Reading
the Entire Torah
Marvin Szneler
In Memory of
Joel Vile
David Wallk
Gary Cortés

Rose Family Early Childhood Education Center

In Memory of
Aileen Forman
Jack Forman
Howard Levitan
Ed & Ellen Rose

Rose S Levine & Doris L Flam Arts & Education Fund

In Memory of
Morton Hurst
Joel Vile
Tibor & Carla
Klausner

Muriel Stulz
Mickey & Marge
Adler

Security Fund

In Appreciation of
Judy Jacks Berman
Miles & Sally Ross

Sylvan Siegler Scholarship Fund for Jewish Camping

In Memory of
Howard Levitan
Al & Sharon Cohen
Amalie Siegler
Joel Vile
Merna Siegler

Happy ♥ Anniversary

August Anniversaries will be celebrated on August 19.
To sponsor a Kiddush contact Jill, 913-647-7286.

Day		Years	Day		Years
1	Jeremy & Debra Sandler	13	18	Harold & Linda Schlozman	49
1	Joshua & Sheryl Stein	13	18	Robert & Aletha Simon	54
2	Howard & Debra Cohen	36	19	Clifford & Paula Cohen	45
4	Stephen & Riki Fein	54	19	Edward & Alicia Klein	27
5	Gustav & Flora Faverman	42	19	Isac & Elaine Rosenberg	44
5	Jared & Lauren Levy	5	19	David & Gail Wainstock	27
5	Lloyd & Jacqueline Stahl	38	20	Melvin & Elaine Glazer	50
6	Brian & Adryan Steinberg	11	20	Dennis & Michelle Kelly	35
10	Lawrence & Nancy Carl	37	22	Alan & Joan Jacobson	46
10	William & Marjorie Schlosberg	48	23	Michael & Laurel Rogovein	58
11	Elliott & Nancy Franks	44	23	David & Frances Sternberg	47
11	Allan & Marilyn Kaufman	43	25	Erwin & Phyllis Abrams	54
11	Melvyn & Janet Kogan	54	25	Arnold & Joan Kort	54
12	Steven & Judy Berman	42	26	Alexander & Peggy Davis	44
13	Arthur & Diane Federman	45	26	David & Jennifer Podor	38
13	Jay & Katharine Levine	22	27	Richard & Charlotte Brockman	56
14	Al & Barbara Beitchman	57	27	Roger & Berenice Haberman	22
14	Stanley & Marjorie Brand	51	28	Lawrence & Harriet Almaleh	34
15	Roger & Nancy Klein	46	28	Peter & Amy Lerner	12
15	Jerald & Rochelle Pelofsky	52	28	Scott & Carla Oppenheimer	29
15	Michael & Beth Sherry	13	28	Daniel & Vivien Schlozman	57
15	Stewart & Esther Stein	46	29	Stephen & Ellen Kort	46
16	David & Judy Jacobs	60	30	Robert & Evie Grant	30
16	Eric Poe & Helaine Cohn	19	30	Arnold & Dorene Manvitz	53
17	Jeremy & Danielle Antes	9	30	David & Gerri Ruben	25
17	David & Rosalyn Burnstein	59	31	Jeffrey & Corrine Blackman	32
17	Byron & Gerri Ginsburg	31	31	Marc & Alana Hammer	20
17	Stephen & Toba Maslan	42	31	Barry Kaseff & Jessica Rudnick-Kaseff	31
18	Alan & Tina Chapman	54	31	Michael & Julie Levine	20

B'nei Mitzvah

Aaron Kohl

August 12 / 20 Av



Aaron's parents are Bella Oshry and Jason Kohl. Grandparents are the late Selwyn and Rachel Oshry and the late Lawrence and Sharon Kohl. Aaron's brother is Benjamin Kohl and his sister is Evelyn Kohl.

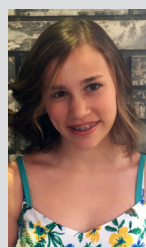
Aaron attends the Hyman Brand Hebrew Academy. His hobbies include soccer, tennis, golf, and basketball.

For his mitzvah project, Aaron is volunteering at the KC Pet Project.

Relatives and friends are invited to worship with the family and attend the Kiddush Luncheon following services.

Audrey Rosemae Brand

August 19 / 27 Av



Audrey's parents are Jasmine Kaplan and Elliot Brand. Grandparents are Margie and Stanley Brand, Jeanne and Ali Alaman and Marian Kaplan. Audrey's siblings are Addison & Evelyn Brand and Macie Kaplan.

Audrey attends the Hyman Brand Hebrew Academy. Her hobbies include cross country, basketball and playing with her younger sisters.

For her mitzvah project, Audrey is volunteering with special needs children.

Relatives and friends are invited to worship with the family and attend the Kiddush Luncheon following services.

Congregational-Wide Events - See each department for their activities

Sunday	Monday	Tuesday	Wednesday	Thursday	Friday	Saturday
		1	2 Warm Up America! SH to Ronald McDonald House	3	4	5
		9 Av	10 Av	11 Av	12 Av 8:07 Candle Lighting	13 Av 9:06 Havdalah Shavu'ah Tov!
6	7	8 SH Executive Committee Meeting	9 SH Book Club	10	11	12 Bar Mitzvah of Aaron Kohl Birthday Shabbat
14 Av	15 Av	16 Av	17 Av	18 Av	19 Av 7:59 Candle Lighting	20 Av 8:58 Havdalah Shavu'ah Tov!
13 B'nei Mitzvah Parents' Meeting	14 CBS Board Meeting	15	16 SH Board of Directors Meeting	17	18	19 Bat Mitzvah of Audrey Brand Anniversary Shabbat Tot Shabbat
21 Av	22 Av	23 Av	24 Av	25 Av	26 Av 7:50 Candle Lighting	27 Av 8:48 Havdalah Shavu'ah Tov!
20 PRS Open House	21	22 SH New Night Group Membership Event	23 PrayerWorks PRS Jump Start for Grades 3-7	24 Judaism for Conversion Candidates Begins	25	26 PrayerWorks Shabbat
28 Av	29 Av	30 Av	1 Elul	2 Elul	3 Elul 7:40 Candle Lighting	4 Elul 8:38 Havdalah Shavu'ah Tov!
27 Day of Discovery 8:45 am - 3:00 pm Back to Shul Bash 4:00 pm	28	29	30 PRS Jump Start for Grades 3-7	31		
5 Elul	6 Elul	7 Elul	8 Elul	9 Elul		

CBS Offices Closed

Candle Lighting Blessing

ברוך אתה ה' אלקינו מלך העולם אשר קדשנו במצותיו וצונו להדליק נר של שבת.

Barukh ata Adonai Eloheinu melekh ha'olam, asher kideshanu b'mitzvotav vetzivanu lehadlik ner shel Shabbat.

August Service Schedule

Weekdays

Minchah:

Sunday-Thursday

6 pm

Shacharit:

Monday-Friday

7 am

Shabbat CBS

Kabbalat Shabbat:

Main Service:

Library Minyan:

Minchah:

Minchah:

Minchah:

Minchah:

Shacharit:

Friday

Saturday

Saturday

August 5

August 12

August 19

August 26

Sunday

6:00 pm

9:30 am

9:30 am

8:07 pm

7:59 pm

7:50 pm

7:40 pm

8:00 am



Shabbat Services and Sunday morning Shacharit will be held at CBS, 14200 Lamar.

Weekday Minyan will be held at Appleman Synagogue, Village Shalom, 5500 W. 123rd St.

*Please Note: On Tuesday, Wednesday and Fridays, Ohev Sholom will join us for the Morning Minyan.



CONGREGATION Beth Shalom

David M. Glickman, *Senior Rabbi*
Hazzan Tahl Ben-Yehuda,
Director of Congregational Learning
Bernie Fried, *Executive Director*
Alan L. Cohen, *Rabbi Emeritus*
Judy Jacks Berman, *Director, RFEC*
Richard Simon, *President*
Bev Newman, *Scroll Editor*
Dahlia Berger, *Scroll Design*

The Congregation Beth Shalom
Scroll (USPS 531-420) is
published monthly by
Congregation Beth Shalom,
14200 Lamar Ave., Overland
Park, KS 66223. Annual
Subscription \$24.00. Periodical
Postage Paid in Kansas City, MO.
DATED MATERIAL

POSTMASTER: Send address
changes to CONGREGATION
BETH SHALOM SCROLL,
14200 Lamar, Overland Park,
KS 66223. Scroll Deadline: The
1st of the previous month. Submit
articles to the Administrative office
before the deadline.

Congregation Beth Shalom

14200 Lamar • Overland Park, KS 66223

www.bethshalomkc.org

Office: 913-647-7279 • Fax: 913-647-7277

*Congregation Beth Shalom, an egalitarian Conservative synagogue,
is a welcoming community of individuals from diverse backgrounds,
strengthening connections with God, Torah and the Jewish people
through communal commitment to prayer, study and acts of loving kindness.*

Coming Attractions:

Scroll Deadline:
August 5 for September

Offices Closed,
Morning Minyan at 8 am
September 4

Tiberius Klausner Competition
September 17

Erev Rosh HaShanah,
Offices Close at Noon
September 20

Offices Closed for Rosh HaShanah
September 21 & 22

Erev Yom Kippur,
Offices Close at Noon
September 29

Yom Kippur
September 30

Office Hours:

Monday - Thursday
8:30 am - 5 pm
Friday
8:30 am - 3 pm
Closed on Federal Holidays

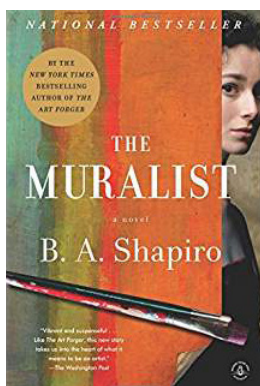
Mt. Carmel Cemetery Winter Hours:

Monday, Wednesday 8 am - 4 pm
Tuesday, Thursday Closed
Saturday Closed
Friday & Sunday 8 am - 4 pm
National Holidays 9 am - 4 pm
*Exceptions: Thanksgiving,
Christmas Day, New Year's Day & Easter*
Jewish Holidays Closed
Phone: 816-398-9290

Sisterhood Gift Shop Hours:

July 10 - 28
Monday 10 am - 12 pm
Wednesday 10 am - 12 pm
Friday 10 am - 12 pm
Other Hours by Appointment Only
913-647-7298

Sisterhood Book Club Reminder



SH Book club will meet on
Wednesday, August 9 at 7:00 pm at
Tina Chapman's. We will be discuss-
ing the *Muralist* by Barbara Shapiro.

For more information contact Linda
Lessner at llessner@kc.rr.com or
913-897-0122.