

## May the Blessings of Passover Fill Your Home With Happiness

### Services in Goldsmith Hall Unless Otherwise Noted

#### Friday, April 22

#### Erev Passover-Offices close at noon

6:45 AM Shacharit Followed by *Siyyum Bekhorim* & Breakfast  
Room 108-09

6:00 PM Minchah only

#### Saturday, April 23 (No Library Minyan)

#### Day 1 Services

9:30 AM Shabbat/Passover morning service

1:45 PM Minchah Only

#### Sunday, April 24

#### Day 2 Services

9:30 AM Morning service

6:00 PM Minchah service

#### Thursday, April 28

#### Erev Yom Tov-offices close at noon

6:00 PM Minchah service

#### Friday, April 29

#### Day 7 Services - Offices Closed

9:30 AM Morning service

6:00 PM Minchah/Ma'ariv/Kabbalat Shabbat

#### Shabbat, April 30 (No Library Minyan)

#### Day 8 Services

9:30 AM Morning Service w/Yizkor

7:52 PM Minchah/Ma'ariv/Havdallah

9:03 PM End of Passover

9:30 PM CBS will re-purchase *chametz*

Monday-Thursday Morning Services, April 25-28, Regular Times at Village Shalom



[Fast of the First Born](#)

[Sell Your Chametz](#)

# From the Rabbi's Study

## Our Inner and Our Outer Jewish Lives



One of the most observed Jewish rituals among American Jews is having a mezuzah on one's doorpost. Nearly every Jewish home has one, and a growing trend

I have seen, is the celebration of a *Chanukat Bayit* – a “home dedication” where the family gathers together for the hanging of a mezuzah. This lovely ritual celebrates a new home and involves friends gathering together for the blessings over the mezuzah, a light festive meal and good wishes for the new home-owner. One ritual that I add when I officiate is to give every guest the opportunity to give the mezuzah nail a symbolic tap with the hammer and offer personal words of blessings for the new home and its inhabitants.

Another of the most observed Jewish rituals among American Jews is a Passover Seder. Seders will vary greatly from one home to another in

length, content and creativity. But according to most research, 80-90% of American Jews will gather together to tell the story of how we were slaves in Egypt.

There is a connection between these two rituals, and a separation. The connection is that it was the smearing of blood on the mezuzot (door posts) of the Israelites' homes that protected them during the final plague of the Exodus. And, it is, of course, the Passover Seder that recounts this night of anxiety.

There is, however, a separation between these two rituals as well. One is completely private and one is quite public. Nobody but your family knows about the celebration of the Seder, and all of your neighbors can see your mezuzah. I believe that these two rituals embody much of the challenges that we have as Jews in America - how much of our faith do we keep private inside our homes and how much of it do we share publicly?

I think, actually, that the mezuzah itself gives a glimpse of how we raise a new generation that will struggle with the challenges of “inner” Judaism and “outer” Judaism. What we call a mezuzah and what we see is really just a box. The essence of the mezuzah is the scroll hidden inside. This is a hand-written parchment like a miniature Torah scroll proclaiming within the inner-chamber of the mezuzah what is sacred and holy.

If we really nurture and grow the inner spiritual life of our children and our community's children, then we won't need to worry about their future. However, if we focus only on the externalities and not our children's inner spiritual life, Jewishly they could be as empty as a mezuzah without a scroll. Our job is to create inner scrolls for the next generation.

*David M. Glickman*

Rabbi David M. Glickman  
[dglickman@bethshalomkc.org](mailto:dglickman@bethshalomkc.org)

## Downtown Talmud Jam, April 13

Downtown Talmud Jam will meet on Wednesday, April 13. The class, facilitated by Rabbi Glickman, will meet from 12:00 - 1:00 pm at the offices of Lathrop and Gage.

Our last class of the season is on May 11. For more information or to RSVP, contact the [CBS ritual office](#) at 913-647-7281.



## Parashat Hashavua

Parashat Hashavua is an ongoing, monthly program taking place every third Shabbat of the month at 9:00 am in the Conference Room. The goal of this program is to engage its participants in a stimulating discussion of the weekly Torah portion in a welcoming atmosphere, where the difference of opinions is respected,



and questions are encouraged. The participants enjoy the deep level of discussion and Kabbalistic insights into the text. The next session will take place on April 16 when Parashat Metzora will be discussed. Everyone is welcome. For more information, contact Svetlana Sorkin at 913-393-1715 or [saraliorasedu@hotmail.com](mailto:saraliorasedu@hotmail.com).

# Executively Speaking

## A Fascinating View of Past Passover Customs



The month of April each year, for most of us, is dominated by the arrival of the Passover holiday. From cleaning, to cooking, to preparing the Seder, we usually do not take the time to see in history how others celebrated this wonderful holiday.

So...Here is a brief, but fascinating view of past Passover customs.

Who is interested in having a Bling Seder? You might have had one if you lived in Hungary years ago. The story of bling happened when the Hebrews were leaving Egypt. The Egyptians, glad to see them go, showed them with gold and silver as they

fled. Remembering these "handouts," Hungarian Jews decorated their Seder tables with all of their valuable jewelry and silver.

Eighteenth century Greece and Morocco would be today's dentist's nightmare. The people of Greece added crushed stone to their charoset to remind them of the bricks prepared by the slaves. This honored practice was also followed by the people of Morocco. As time went by and their teeth fell apart, this custom slowly disappeared.

In commemoration of the paschal offering in the Temple, some Jews in Morocco had the custom of eating heads of sheep at the first Seder.

The first Seder was named Laylar-rass or "night of the heads." Would you decline the invite to dinner?

The lucky piece of Afikoman... Jews from Afghanistan and Iran have the custom of preserving a piece of Afikoman to ward off the evil eye. In Libya and Tunisia the Afikoman was saved to protect sea travelers, and in Persia the Afikoman was kept in one's pocket for goodness and blessings.

In closing, it is my Passover wish that you enjoy your favorite customs, and may your home be filled with many blessings this year.

**Elaine Levine**

[elvine@bethshalomkc.org](mailto:elvine@bethshalomkc.org)

## Slate of New Officers and Board Members



The CBS nominating committee presents the following slate of officers and new board members for 2016-17 to be elected and installed at our June Congregational meeting and installation:

### Officers:

**President:** Richard Simon

**Executive Vice President:** Judge Art Federman

**Treasurer:** Jason Krakow

**Ritual Vice President:** Victor Wishna

**Education Vice President:** Shira Zigler

**Secretary:** Dana Schwartz

**Immediate Past President:** Dr. Norman Kahn, Jr.

### New Three Year Board Members 2016-2019:

- Sheri Bell
- Harold Kaseff
- Ann Karty, MD
- Jason Krakow
- Stuart Levin
- Adam Matsil
- Dana Schwartz
- Shira Zigler

### Returning Board Members 2016-2018:

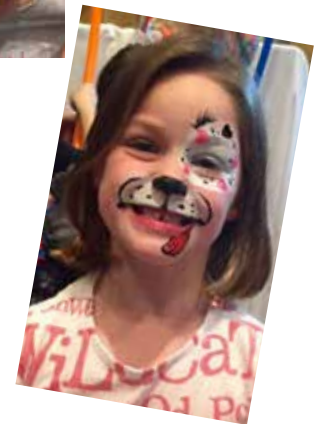
- Susan Azorsky
- Al Beitchman
- Steve Feinstein, Ph.D
- Bernie Fried
- Chuck Gasser
- Alicia Klein
- Rachel Krantz
- Victor Wishna

### Returning Board Members 2016-2017:

- Brian Brockman
- Karen Cole
- Judge Art Federman
- Norman Kahn, Jr., MD
- Linda Lessner
- Cathy Newman
- Richard Simon
- Wendy Sitzmann



## PURIM CARNIVAL 2016



Ever wonder where the Jewish people came from?  
Ever wonder what we can do to make an impact on  
our Jewish future? We'll discover the answers to those  
questions and many more at...

Join us at EMTZA Region USY's Spring Kallah, April 14-17, 2016 at Sunstream Retreat Center in Ogden, IA for a weekend full of fun, friends, ruach, and celebration. Join your fellow USYers as we take a look at our own history, choose the regional leaders who will lead us into the future, and celebrate an amazing last year in EMTZA Region! We hope to see you in Ogden for an amazing Spring Kallah! Sign up today!  
-Elana Goldenberg & Theo Walker



# Sisterhood

Berenice Haberman, President | [shpres@bethshalomkc.org](mailto:shpres@bethshalomkc.org) |

## Sisterhood Annual Torah Fund Luncheon

Our Annual Torah Fund Luncheon, catered by Steve Ellenberg, will be held on Wednesday, April 27, in Goldsmith Hall. Hors d'oeuvres begin at 11:00 am. The cost of the luncheon is \$23 plus a minimum \$10 donation or payment of a previous pledge to Torah Fund. Guests are welcome. Both reservations and donations (including previous pledges) are due by April 15 in order for contributor names to be included in the program. Checks should be made out to Torah Fund.

The afternoon's entertainment will be provided by Coleen Dieker, a Kansas City native and local musician. She grew up in a musical family and began classical training in piano and violin in her childhood. Coleen attended the Berklee College of Music in Boston where she studied piano performance and musical improvisation. She is also proficient in guitar, ukulele and flute. Since moving back to the area, Coleen has performed with numerous venues as a freelance

musician and guest artist. Coleen has recorded and performed with many local and national touring artists. In 2011 she joined the Traveling Tefillah Band, and has enjoyed playing and singing Jewish music ever since. She is currently the music director at Congregation B'nai Jehudah and the piano accompanist at Hyman Brand Hebrew Academy.



*Coleen Dieker*

## Decorate Your Seder Table From the Sisterhood Gift Shop



From traditional to contemporary, the Sisterhood Gift Shop has you covered. We carry a variety of Seder and Matzah Plates that will compliment any seder table. We also have Kiddush cups, Elijah cups, Matzah covers and hostess gifts. Do you need a fun project to entertain children on the off chance that the Seder gets too long for them? The gift shop has those, too. Come visit us and see the variety.

## Book Club Meets on April 6



Sisterhood Book Club will meet on Wednesday, April 6, 1:30 pm, at the home of Sunie Levin. The club will be discussing *Catch The Jew!* (nonfiction) by Tuvia Tenebom. For more details or to attend, contact Linda Lessner at 913-897-0122 or [llessner@kc.rr.com](mailto:llessner@kc.rr.com).

## Board of Directors Meeting at Village Shalom



The Sisterhood Board of Directors recently held a luncheon and board meeting at Village Shalom where past-presidents, life board members and honorary board members were honored. Over forty ladies attended.





## CELEBRATING LIFE CYCLE EVENTS

### Happy ♥ Anniversary

*April Anniversaries will be celebrated on April 16.  
To sponsor a Kiddush contact Martha, 913-647-7283.*

### Bat Mitzvot

#### Zoe Li Sher

*April 9/1 Nisan*



Zoe's parents are Scott Sher and Anne Rosenthal. Grandparents are Celia Sher and Joe and Beverly Rosenthal. Her siblings are Alex and Davi. Zoe attends Leawood Middle School and enjoys traveling, basketball and shopping.

For her Mitzvah project, Zoe is donating to and touring Sickkids

Hospital in Toronto, Canada.

Relatives and friends are invited to worship with the family and attend the Kiddush Luncheon following services.

Day		Years
2	Matthew & Rhea Nadler	21
2	Peter & Amy Shapiro	21
2	Steven & Diane Azorsky	27
2	Ronald & Susan Goldsmith	49
2	Harold & Renee Fuchs	61
3	Steven & Elizabeth Levy	5
3	Floyd & Bari Freiden	45
4	Stanley & Marlene Katz	62
5	Mark Eisemann & Leslie Mark	29
5	Robert & Bette Grossman	35
6	Joshua & Allison Glickman	8
7	Bernard & Ella Ullman	53
7	Joe & Fran Wolf	53
7	Harold & Natalie Klopfer	59
8	David & Carol Porter	21
8	Steven & Marcia Schorr	44
9	Randall & Elyse Block	38
20	Sanford & Ida Levine	31
22	Sid & Nan Kanter	42
29	Clarence & Alice Winer	60

#### Alyssa Carli Turtledove

*May 7/29 Nisan*



Alyssa's parents are Robert and Stacie Turtledove. Grandparents are Francine and Loring Fluke of Ipswich, MA and Claudie Meents of Johannesburg, South Africa. She has one brother, Nathan. Alyssa attends Pembroke

Hill and her hobbies are tennis and art.

For her Mitzvah project, Alyssa is helping Gordan Parks Elementary School by volunteering her time and helping to get necessities for the students. She has organized a new/gently-used coat and pant drive and her kiddush luncheon centerpieces will be made up of school supplies to be donated to the school.

Relatives and friends are invited to worship with the family and attend the Kiddush Luncheon following services.

### Mazal Tov to...

**Mel and Elaine Glazer** upon the birth of a granddaughter, Elisheva Chaya Glazer. Elisheva's parents are Sarah & Brian Glazer. Siblings are: Aharon, Chaim Yaakov and Miriam Golda.

**Ellie Bodker**, daughter of **Fred and Cindy Bodker** and granddaughter of **Harvey Bodker**, who has been elected International BBG President.

**Leah Sosland**, daughter of **Josh and Jane Sosland** and granddaughter of **Neil and Blanche Sosland**, who is the winner of the Kansas State Sons of the American Revolution Knight Essay Contest.

**Ethan Newman**, son of **Neil and Cathy Newman** and grandson of **Peter and Bev Newman**, who has achieved the Boy Scout rank of Eagle Scout.

**River Hennick**, daughter of **Mark and Elizabeth Hennick**, who has received six scholastic art and writing awards from the Hyman Brand Hebrew Academy.



## Tank Time with Hazzan Ben-Yehuda

Hazzan Tahl Ben-Yehuda is a salt water tank enthusiast and expert. Two years ago she set up a wonderful salt water aquarium in one of the PreK rooms. Every month she meets with the PreK students for "Tank Time", and teaches them about the aquarium. Last month Hazzan Ben-Yehuda taught the children about corals. Did you know that a coral has a body but with fewer parts than a human? Next time you see Hazzan Ben-Yehuda, ask her about corals!



## Friday Night Lights is Coming



Beth Shalom in partnership with PJ Library will sponsor Friday Night Lights on Friday, April 8, from 6:00 -7:30 pm in Goldsmith Hall. Join us for a fun and engaging Tot Shabbat service followed by a very "young child" friendly Shabbat Dinner and a special activity! The evening's chairs are Robyn Frieden and Ashley Ross. Call the Preschool office at 913-647-7285 or [click here](#) for more information or make reservations on the Beth Shalom website.

## Tot Shabbat & Shabbat Kids' Club on April 16

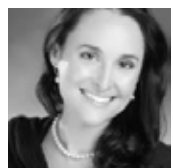
Tot Shabbat and Shabbat Kids' Club will meet April 16 at 11:00 am. Join us for a fun-filled Shabbat with songs, prayers and a story. Prior to services there will be a snack for both groups near the Youth Lounge. Tot Shabbat meets in Room 111-112 and Kids' Club will meet in the Library Reading Area. Tot Shabbat and Shabbat Kids' Club still have months available this year for sponsorship! Contact Baree Nottberg at [bnottberg@yahoo.com](mailto:bnottberg@yahoo.com) or Shira Zigler at [shiramichele@yahoo.com](mailto:shiramichele@yahoo.com).

This program is underwritten by the Eugene and Shirley Novorr Tots for Torah Fund.

## Polsky Religious School

Hazzan Tahl Ben-Yehuda, Director of Congregational Learning | [hazzantby@bethshalomkc.org](mailto:hazzantby@bethshalomkc.org)

## Passover is Coming!



If you are anything like me, you are already rationing your bagels and pasta, figuring out just what you need to buy in the next few weeks so that there will be as little left as possible when you start to clean for Passover. You're thinking – do I buy the big peanut butter now? Perhaps I should buy the smaller one...

Passover forces us to get organized. It's the original motivation for spring cleaning. Passover challenges us to take stock not only of the contents of our pantry, but also of the state of our soul, so to speak. During the month between Purim and Passover, we look within and consider modern freedom and slavery.

In the Polsky Religious School, we will experience model sederim, one in grades K-2 on Sunday, April 10, and one in grades 3-7 on April 13. Each seder will contain elements that a traditional seder has – there will be the

four questions, karpas, charoset and maror. But, in the seder for the older students, we will ask different questions than the traditional seder poses. We will consider whether we are truly free and what the cost of our freedom is. We will consider the tears of slaves today when we dip the parsley, we will talk about the bitterness of human trafficking today when we taste the maror, and we will formulate our response as free people to the injustice around us as we taste the sweet charoset. If you would like to join us for this model seder, please call the PRS office, 913-647-7286.

## PRS Classes at Village Shalom For One Afternoon

On Wednesday, May 4, all 3rd through 7th grade Polsky Religious School classes will meet at Village Shalom. Students will be met by their teachers in the front circle of Village at 4:15 pm; they will then attend their regular first hour classes. For more information, contact the school office at 913-647-7286.

## Of Blessed Memory

We express condolences to our Beth Shalom Members, their Families and Friends.

*Helen Samberg Shalinsky, z"l, March 5 - 25 Adar I*

*Hortense Rge Haith, z"l, March 8 - 28 Adar I*

*Angela Hiller, z"l, March 9 - 29 Adar I*

*Janice N. Kfugman z"l, March 12 - 2 Adar II*

*Lawrence Krakow, z"l, March 13 - 3 Adar II*

*Grace Ginsberg Ernstein, z"l, March 17 - 7 Adar II*

## Yahrtzeits

Join us for morning or evening minyan to say Kaddish for your loved one. See service schedule, page 11.

### 22 Adar II - April 1

Yetta L. Ginsberg

### 23 Adar II - April 2

Harry Krantz

Adolph Loeffler

### 24 Adar II - April 3

Mary Goller

Melvin Z. Hoffman

Max Morris

Harry Rittmaster

Will Swerdloff

### 25 Adar II - April 4

Albert B. Lipsey

Rosa Pfeffer

Chiel White

### 26 Adar II - April 5

Nathan Becker

Arthur Brand

Henry Greenbaum

Nathan Gumowitz

Gertrude Killmnick

Eugene L. Novorr

Edythe Trillin

### 27 Adar II - April 6

Thelma Fox

Ezra Kowalsky

### 28 Adar II - April 7

Etta Sherman

Max Stein

### 29 Adar II - April 8

Anna Rose Peltzman

Katie K. Tenenbaum

Marie Traxler

### 1 Nisan - April 9

May Berger

Tillie Brenner

Morris Brooks

Tillie Dreiseszun

Perez Dubinsky

Maier Eisemann

Terry Evrad

Menuha Goldberg

Barnett L. Hoffman

Gertrude Jerwick

Harry Kramer

Abraham H. Levey

Besse Marks

Paul Shalet

Harry Tabolsky

Rachel Vogel

### 2 Nisan - April 10

Goodman Ace

Ben Benjamin

Ida Blender

Thomas Cohen

Bernice Friedman

Esther Gilbert

Herman Goldwasser

Morris Hammer

Vera Levy Hershman

Clara Kahn

Donna Rachel Levine

Louis Levy

Elisabeth Sorkin

Jeanette Wishna

### 3 Nisan - April 11

Minnie Apple

Nettie Bondell

Katie Brown

Arthur Chapman

Tillie Cohn

Bertha Diamant

Anna Lee Grossman

Marjorie Jacobs

Sarah Kahn

Phenie Kosovitz

Sarah Milensky

Flora S. Rieger

Jack Ruback

Wolf Leib Schlozman

David Schwartz

Anna Shaoul

Rebecca Sheskin

Morris C. Stein

### 4 Nisan - April 12

Melvin P. Goldman

Abraham Krigel

Lina Lessner

Sophie Levine

Carl Nusbaum

Thomas Parness

Alvin J. Pelofsky

Lisa B. Rosel

Mirah Rostov

Meyer Rubin

Herman Silverman

Morris Webber

### 5 Nisan - April 13

Morris Bigus

Ben Bloom

Aaron E. Copelman

Sadie Goodrich

Sam Gutovitz

Morris Kantor

Tovia Lachs

Florence Lipsig

Mollie F. Neusteter

Sophie Risburd

Gabriel Spector

Jerome N. Stolzoff

### 6 Nisan - April 14

Ruth Baker

Tillie Z. Blend

Sarah Day

Ben Eisenberg

Michael Frischer

Charles Furman

Ida Kornblum

Louis Rabicoff

Marlene Shapiro

Jacob R. Shapiro

### 7 Nisan - April 15

Harry Berger

Rebecca Byers

Judy Chaikin

Max Chemel

Albert Greenberg

Jacob M. Greenberg

Ruben Kern

Simon W. Mnookin

Ednah Sheskin

Faye Singer

Ike Steinzeig

Zeev Viner

Matilda F. Weingarten

Joseph Weneck

### 8 Nisan - April 16

Ernestine Benjamin

Paul E. Berman

Leon Fogel

Louis Ginsberg

Sam Goldstein

Yolan Greenbaum

Anna Kivovitch

Mary Ann Linger

Evelyn B. Marks

Henry Michelson

Pat (A.H.) Novorr

Ruth Rosenberg

Bailey Schultz

Meyer Wechsler

### 9 Nisan - April 17

Annie Dworkowitz

Sam Fish

Tzivve Fox

Sam Greenstein

Cecil Levin

Hyman Naman

Minnie Novorr

Mary Riss

David Rudner

Edward Stein

Abraham A. Steinberg

Pearl Wasserman

### 10 Nisan - April 18

Minnie Achtenberg

Daisy Bernstein

Mayer Bernstein

Mary Blond

Bernard M. Brown

Frances Denebeim

Sarah Gilbert

Alexander Gumowitz

Leslie Jacobson

Rose Krashin

Ned Levin

George Lipsitz

Jacob Schmidt

Jean Silverman

Harry Stolor

Morris Swerdloff

Clara Tempofsky

Simon Tonopolsky

### 11 Nisan - April 19

Ita-Lay Binusova

Bessie Fabe

Bertha C. Holtzer

Henry S. Karger

Tillie Pelofsky

Clara Rappaport

Minnie Schlein

Anna G. Shapiro

Esther Steinberg

Hannah Steinzeig

Dora Viscofsky

### 12 Nisan - April 20

Gerta Baruch

Hanna Bernstein

Abraham Epstein

Arthur H. Herzmark

Fannie Karbank

Sarah Katz

Harry Lipsky

Helen Parness

Max Partnoy

David Singer

Phyllis Wainstock

### 13 Nisan - April 21

Barney L. Allis

Saul Baum

Ann Brotsky

Louis Chaiken

R. Robert Cohn

Lena Eaglstein

Benjamin Feinberg

Abraham Goldman

Alan Gould

Susie Peltzman

Helen G. Rhodes

Ann Rolsky

Katie L. Rosenberg

Lena Lee Sherman

Nathan Wexler

Helen F. Winer

### 14 Nisan - April 22

David Blumkin

Marvin Bridges

Mindel Burstein

Evelyn Cohen

Edith Goldman

Alvin Jackson

Helen F. Krashin

Phillip Magazine

Beatrice G. Nicholas

Ira Rosenblum

Sylvia Shopmaker

### 15 Nisan - April 23

Ray Brodie

Dora Gaba

Jack Geller

Ben Gibian

Sol Mallon

William M. Nowick

Regina Plattner

Avram Raskin

Ida Sapirstein

Jennie Siegelbaum

Harry L. Supofsky

### 16 Nisan - April 24

Morris Bayless

Bessie E. Benjamin

Doris Flam

Esther Gates

Fannie Gilbert

Leah R. Grollman

Frances R. Gross

James Levinson

Hillel Litman

Gertrude Rabinowitz

Roberta Schlozman

Annie Shafon

Estelle L. Traxler

Dorothy B. Vigder

Joseph Waxman

### 17 Nisan - April 25

Jack Alpert

Sam A. Cohn

Eric Dollman

Abe Eisen

Samuel Ginsberg

Leo Goodman

Joseph Hartman

Madeleine Markowitz

Nathan Price

Patricia G. Segal

Shirley Seiden

Sarah Silverman

Bertha Simon

Al Solow

Herbert Swartz

Eugene Taxman

Louis Wilk



## Ann & Isadore Gale Scholarship Fund

*In memory of*  
**Avraam Sorkin**  
Roman & Svetlana Sorkin

## Arlene & Gerald Ginsberg Youth Scholarship Fund

*In memory of*  
**Elaine Polsky**  
Sophia Waldmann James Ginsberg

## Benjamin Ryweck Torah Fund

*In honor of*  
**Norma Shapiro's Speedy Recovery**  
Shirley Gottstein

*In memory of*  
**Gloria Fitelson**  
Joan March  
**Walter March**  
Rachel & Emma Salle  
**Isadore Weintraub**  
Shirley Gottstein

## Beth Shalom General Fund

*In honor of*  
**Stanley Katz's 90th Birthday**  
Scott & Susan Krigel  
*In memory of*  
**Jettchen Bamberger**  
**David Bamberger**  
**Arthur Bamberger**  
**Jette Bergmann**  
Albert Bamberger  
**Marilyn Bressel**  
Jerold Bressel  
**Anna Choikhait**  
Steve Choikhait  
**Rea L. Fried**  
Harvey Fried  
**Marvin Gibian**  
Scott & Susan Krigel  
**Zachary Glass**  
Mark & Mara Lambert  
**Anna Glazer**  
Melvin & Elaine Glazer  
**Fannie Gordon**  
Allen Gordon  
**Morris P. Gordon**  
Nadine Gordon  
**David Keamer**  
Florence Bernstein

**Bess Kopin**  
Clarence & Alice Winer  
**Ann Kreisler**  
Kate Lebovitz  
**Irene Landy**  
Roger & Berenice Haberman  
Earl & Shirley Unell  
David & Judith Weinstein  
**Phyllis W. Leff**  
**William M. Leff**  
Joseph Leff  
**Sophie S. Levin**  
Lillian Kolkin  
**Helen Loeffler**  
Ronald & Andrea Goldberg  
**Maxine Margolin**  
Lynn Gordon  
**Herman Mondschein**  
Neil & Blanche Sosland

**Elaine Polsky**  
Bill & Pam Kanter  
Scott & Susan Krigel  
Kate Lebovitz  
**Sheldon Sander**  
Bettye Balkin  
**Estelle Schneider**  
Alan Schneider  
**Benjamin Sosland**  
Henry & Judy Sosland  
**Dr. William Sosnow**  
Michael Sosnow  
**Morley Steinberg**  
Michael Green & Hue Tran  
**Helen Steinzeig**  
Hanan Steinzeig  
**Bertha Zolotor**  
Robert Corchine & Andrea Poisner

**Beverly & Harvey Bodker Endowment Fund**  
*In honor of*  
**Harvey Bodker's Speedy Recovery**  
Jerry & Barbara Cosner  
*In memory of*  
**Minnie Friedson**  
Fred & Cynthia Bodker  
Betsy Bodker

## Cemetery Maintenance Fund

*In memory of*  
**Solomon Blum**  
Nata Scharf  
**Robert L. Hoffman**  
Bruce & Susan Winston  
**Harry Kaufman**  
Mitch & Lisa Hamburg  
**William Levitta**  
**Barbara Pape**  
Bruce & Celia Solomon  
**Morris Oliver**  
**Marilyn Oliver**  
Phyllis Arenson  
**Dr. William Sosnow**  
Steven & Elise Cohen

## Eleanor & Joseph Kopin Endowment Fund

*In memory of*  
**Morris Goldstein**  
**Joseph Kopin**  
Anita Daniels

## Gale & Maxine Grossman Religious School Fund

*In memory of*  
**Irene Landy**  
Martin Bass

## Hanan Wedlan Family Fund

*In memory of*  
**Elizabeth Wedlan**  
Mitch & Lisa Hamburg

## Hazzan Ben-Yehuda's Discretionary Fund

*In memory of*  
**Sadie Katzman**  
Meyer Katzman

## Jacob H & Rose Levine Teacher Development Fund

*In memory of*  
**Jacob H. Levine**  
Peter & Beverly Newman  
**Henry Steinhaus**  
Arthur & Linda Levine

## Joel Polsky USY Fund

*In memory of*  
**Elaine Polsky**  
Richard & Barbara Atlas  
Michael & Gloria Azorsky  
Judith Bell  
Loren & Marilyn Berenbom  
Randall & Elyse Block  
David & Lynne Bock  
Harvey Bodker  
Edith Bratt  
Herb & Bonnie Buchbinder  
Todd Clauer  
& Mirra Klausner  
Alan & Linda Cohen  
Jerry & Barbara Cosner  
Melvin & Sibby Cosner  
Robert & Cindy Daniels  
Sam Devinki  
Gustave & Elinor Eisemann  
Jerald Enslin  
Arthur & Diane Federman  
Isak & Ann Federman  
Floyd & Bari Freiden  
Marcia Friedman  
Marvin & Carol Goldstein  
Janey Goodman  
Linda Hammer  
Hanan & Natalie Hammer  
William & Lynn Intrater  
Rabbi Raphael Kanter  
& Cindy Benson  
Joseph Smuckler  
& Marcia Karbank  
Harold Kaseff  
& Rhea Salasche  
Tiberius & Carla Klausner  
Maury Kohn  
Timothy & Jacquelyn Lawler  
Arthur & Cynthia Liebenthal  
Jerome & Margaret Nerman  
Steven & Susan Osman  
I.I. Ozar  
Steve & Karen Pack  
Florence Pack  
Stevie and Shelly Pessin

Pola Firestone  
Edward & Ellen Rose  
Linda Saver  
Neil & Blanche Sosland  
Marvin Szneler  
Stanford & Joyce Zeldin

## Kiddush Fund

*In memory of*  
**Gertrude Kaseff**  
Harold Kaseff  
& Rhea Salasche  
**Bess Kopin**  
Barbara Goldstein  
**Irene Landy**  
Marvin & Carol Goldstein  
Harold Kaseff  
& Rhea Salasche  
**Helen Shalinsky**  
Marvin & Carol Goldstein

## Leo & Ida Rose Feingold Nursery School Fund

*In memory of*  
**Helen Shalinsky**  
Larry Cohen

## Mallin Childhood Enrichment Fund

*In memory of*  
**Morris Dobrowski**  
**Jenette Dobrowski**  
Jeffrey & Sharon Mallin  
Larry & Beverly Mallin

## Marcia Eveloff Lechem Fund

*In honor of*  
**Addison Brand's Bar Mitzvah**  
**Natalie Hammer's Special Birthday**  
Jerry & Barbara Cosner  
*In memory of*  
**Mark Fasbinder**  
Sam & Danielle Levine  
**Irene Landy**  
Robert & Cindy Daniels  
**Herman Mondschein**  
Ronnie Butler  
Michael & Gloria Azorsky

Judith Bell  
Robert & Cindy Daniels  
Harold Kaseff  
& Rhea Salasche  
Larry & Linda Lessner  
Linda Minter  
Steven & Marcia Schorr  
Erwin & Betty Stern  
**Helen Shalinsky**  
Marshall & Hope Talbot

## Meyer J Pachter Video Library

*In memory of*  
**Herman Mondschein**  
Regina Pachter

## Morris & Rose Weinberg Endowment Fund for Camp Shabbat

*In memory of*  
**Mickey Brown**  
Linda Hammer

## Naman, Pollack, Block Youth Fund

*In honor of*  
**Stan Katz's 90th Birthday**  
Randall & Elyse Block

## Rabbi Glickman's Discretionary Fund

*In honor of*  
**Michael Abrams' 50th Birthday**  
Kurt & Stephanie Kavanaugh  
**Phyllis Abrams, Leadership Recognition Award**  
Marvin Szneler  
**Peter Shapiro**  
Acme Investments  
*In memory of*  
**Angela Hiller**  
Jerald & Rochelle Pelofsky  
**Lawrence Krakow**  
Arthur & Diane Federman

## Rose & Sol Stolowy Fund

*In memory of*  
**Elaine Polsky**  
Michael & Laurel Rogovoin

## Rose Family Early Childhood Education Center

*In appreciation of*  
**Beth Albee**  
Greg & Debbie Greenberg  
*In memory of*  
**Elaine Polsky**  
Susie & Paul Blackman

## Rose S Levine & Doris L Flam Arts & Education Fund

*In memory of*  
**Sara Krantz**  
**Carl Nusbaum**  
Judith Bell  
**Herman Mondschein**  
Tiberius & Carla Klausner

## Sanford Dunn Merit Scholarship Fund For Study in Israel

*In memory of*  
**Elaine Polsky**  
**Arnold Shanberg**  
Patsy Shanberg

## Stein Family Youth Fund

*In memory of*  
**Elaine Polsky**  
Stewart & Esther Stein

## Sylvan Siegler Scholarship Fund For Jewish Camping

*In memory of*  
**Jeff Johl**  
**Irene Landy**  
**Herman Mondschein**  
**Elaine Polsky**  
**Anne Singer**  
Merna Siegler

## Tommy & Bert Rogovoin Memorial Fund

*In memory of*  
**David Rogovoin**  
Michael & Laurel Rogovoin



# Village Shalom

FATHER'S DAY 5K/10K RUN/WALK

Village Shalom's 29th Annual Father's Day run will be held on Sunday, June 19. The 5K/10K run/walk will start at 7:30 am. All proceeds from the race will benefit Village Shalom's memory care programs and services. The Father's Day Run features a USATF-certified course, a free kids' fun run, prizes, music, food and more. Registration is now open. Visit [www.FathersDayRun.org](http://www.FathersDayRun.org) for sponsorship and registration information for this family-friendly event.



Men's Club Wants You  
Join Us at Our Programs  
For More Information, Contact Chuck Gasser at 913-579-5705

## CBS Holds Yom HaShoah Program

On Wednesday, May 4, at 5:30 pm, there will be a Yom HaShoah program for all 3rd-7th grade PRS classes at Village Shalom in the Appleman Synagogue. This program will immediately precede evening services at 6:00 pm and will be hosted by the PRS 7th grade class as well as Abby Flekier and Noah Kahn, our 10th grade students who participated this year in Together We Remember. This is a community-wide 10th grade program that selects students to study together with the director of the Midwest Center of Holocaust Education and to visit the US Holocaust Museum in Washington, D.C. Everyone is welcome. For more information, contact the school office at 913-647-7286.

## Mt. Carmel Volunteer Day, April 17

Please join us Sunday, April 17 from 12:00- 4:00 pm, to paint, clean, weed, rake and more at Mt. Carmel Cemetery, 5529 Ditzler Road. We will spend the day beautifying the cemetery, and this would be an excellent opportunity for those looking to perform community service. For more information or to sign up, contact Bruce Luchen at 913-220-7518 or [bluchen6297@aol.com](mailto:bluchen6297@aol.com).

## CBS Honors Our Veterans & Active Duty Military

This Memorial Day, we are honoring our CBS military. Please use our online form to tell us who wore our nation's colors in the Armed Services. Deadline is May 20. There is an [online link](#).

## Kindergarten Consecration



On Shabbat, April 16, CBS will hold its annual Kindergarten Consecration at 11:00 am in the Library Reading Area. Students enrolled in kindergarten at both the Hyman Brand Hebrew Academy and the Polsky Religious School will be honored during their first year of formal Jewish studies. Friends and family are invited. *Mazal tov* to all of this year's kindergarten students and their parents. They include:

Lucy Cattano  
Sadie & Sam Cohen  
Sydney Feldman  
Dylan Freiden  
Maya & Ryan Glickman  
Ella Jerwick  
Dylan Kimmel

daughter of Frank Cattano & Jennifer Cattano  
children of Yoni & Gina Cohen  
daughter of Adam & Mia Feldman  
son of Seth & Robyn Freiden  
children of Joshua & Allison Glickman  
daughter of Bradley & Jennifer Jerwick  
son of Jordan & Malinda Kimmel

Isabella Kroll  
Kyra Nussbaum  
Jacob Palan  
Gabriel Sherry  
Joshua Snitz  
Asher Steinberg  
daughter of Aaron & Jessica Kroll  
daughter of Jered & Corey Nussbaum  
son of David & Amanda Palan  
son of Michael & Beth Sherry  
son of Ian & Wendy Snitz  
son of Brian & Adryan Steinberg

Congregational-Wide Events - See each department for their activities

Sunday	Monday	Tuesday	Wednesday	Thursday	Friday	Saturday
					1 No RFECEC, Parent/Teacher Conferences 7:25 Candle Lighting 22 Adar II	2 Bat Mitzvah of Nina Schultz 8:26 Havdalah Shavuah Toiv 23 Adar II
3 Steppin' Out 24 Adar II	4 25 Adar II	5 SH Beyond Bullying 26 Adar II	6 SH Exec. Mtg SH Book Club 27 Adar II	7 Peltzman Class 28 Adar II	8 Friday Night Lights 7:31 Candle Lighting 29 Adar II	9 Bat Mitzvah of Zoe Sher Birthday Shabbat 8:33 Havdalah Shavuah Toiv 1 Nisan
10 PRS K-2 Grade Model Seder 2 Nisan Pesach	11 Board Meeting 3 Nisan	12 4 Nisan	13 Downtown Talmud Jam PRS 3-7 Grade Model Seder Warm Up America! 5 Nisan	14 Peltzman Class 6 Nisan	15 EMTZA Region Spring Kallah April 15-17 7:38 Candle Lighting 7 Nisan	16 Anniversary Shabbat Tot Shabbat & Shabbat Kids' Club Parashat Hashavua 8 Nisan 8:39 Havdalah Shavuah Toiv
17 9 Nisan Pesach	18 10 Nisan	19 11 Nisan	20 12 Nisan PrayerWorks at CBS	21 13 Nisan No RFECEC, Passover Break	22 14 Nisan Erev Pesach Offices Close at Noon 7:45 Candle Lighting	23 15 Nisan Pesach No Library Minyan 8:46 Havdalah Shavuah Toiv
24 16 Nisan Pesach	25 17 Nisan Pesach	26 18 Nisan Pesach	27 19 Nisan Pesach No PRS No RFECEC, Passover Break	28 20 Nisan Pesach Offices Close at Noon No RFECEC, Passover Break	29 21 Nisan Pesach Offices Closed No RFECEC, Passover Break 7:52 Candle Lighting	30 22 Nisan Pesach Yizkor Service, No Library Minyan 8:53 Havdalah Shavuah Toiv

## Candle Lighting Blessing

ברוך אתה ה' אלקינו מלך העולם אשר קדשנו במצותיו וצונו להדליק נר של שבת.

Barukh ata Adonai Eloheinu melekh ha'olam, asher kiddeshanu b'mitzvotav vetzivanu lehadlik ner shel Shabbat.

## April Service Schedule

### Weekdays

Minchah:

Sunday-Thursday  
6 pm

Shacharit:

Monday-Friday  
7 am

## Shabbat CBS

Kabbalat Shabbat: Friday 6:00 pm  
Main Service: Saturday 9:30 am  
Library Minyan: Saturday 9:30 am  
Minchah: April 2 7:25 pm  
Minchah: April 9 7:31 pm  
Minchah: April 16 7:38 pm  
Minchah: April 23 7:45 pm  
Minchah: April 30 7:52 pm  
Shacharit: Sunday 8:00 am



Shabbat Services and Sunday morning Shacharit will be held at CBS, 14200 Lamar.  
Weekday Minyan will be held at Appleman Synagogue, Village Shalom, 5500 W. 123rd St.

\*Please Note: On Tuesday, Wednesday and Fridays, Ohev Sholom will join us for the Morning Minyan.





## Congregation Beth Shalom

14200 Lamar • Overland Park, KS 66223

[www.bethshalomkc.org](http://www.bethshalomkc.org)

Office: 913-647-7279 • Fax: 913-647-7277

### CONGREGATION Beth Shalom

David M. Glickman, *Senior Rabbi*

Hazzan Tahl Ben-Yehuda,

*Director of Congregational Learning*

Elaine Levine, *Executive Director*

Alan L. Cohen, *Rabbi Emeritus*

Judy Jacks Berman, *Director, RFEC*

Norman Kahn, Jr. MD *President*

Bev Newman, *Scroll Editor*

Dahlia Berger, *Scroll Design*

The Congregation Beth Shalom Scroll (USPS531-420) is published monthly by Congregation Beth Shalom, 14200 Lamar Ave., Overland Park, KS 66223. Annual Subscription \$24.00. Periodical Postage Paid in Kansas City, MO. **DATED MATERIAL**

**POSTMASTER:** Send address changes to CONGREGATION BETH SHALOM SCROLL, 14200 Lamar, Overland Park, KS 66223. Scroll Deadline: The 1st of the previous month. Submit articles to the Administrative office before the deadline.

*Congregation Beth Shalom, an egalitarian Conservative synagogue, is a welcoming community of individuals from diverse backgrounds, strengthening connections with God, Torah and the Jewish people through communal commitment to prayer, study and acts of loving kindness.*

#### Looking Ahead:

Scroll Deadline:	Yom Hazikaron
April 4 for May	May 11
PRS Classes to Meet at Village Shalom	Yom Ha'Atzmaut
May 4	May 12
Yom Ha Shoah	10th Grade Confirmation
May 5	May 21
No PRS Classes due to Mother's Day	Offices Closed for Memorial Day
May 8	May 30

#### Office Hours:

Monday - Thursday	8:30 am - 5 pm
Friday	8:30 am - 3 pm
Closed on Federal Holidays	

#### Mt. Carmel Cemetery Summer Hours:

Monday, Wednesday	8 am - 5 pm
Tuesday, Thursday	Closed
Saturday	Closed
Friday & Sunday	8 am - 4 pm
National Holidays	9 am - 4 pm
<i>Exceptions: Thanksgiving, New Year's Day &amp; Christmas Day</i>	
Jewish Holidays	Closed
Phone: 816-398-9290	

#### Sisterhood Gift Shop Hours:

Monday-Wed.	10 am - 2:30 pm
Thursday	10 am - 1 pm
Friday	10 am - 12 pm
Sunday 9:30-12 pm	PRS Days Only
Other Hours by Appointment Only	
913-647-7298	

## Springtime Tilapia by Connie Simon (Passover, Gluten Free, Dairy Free)

### Ingredients:

- 2 Shallots, Minced Fine
- 2 TBSP Chopped Garlic
- 2 TBSP Chopped Fresh Oregano
- 2 TBSP White Sugar
- 2 TBSP Olive Oil
- 2 TBSP Red Wine Vinegar (Kedem is KP)
- 2 TBSP Lime Juice
- 1 TSP Salt
- ½ TSP Pepper
- 4-6 Tilapia Filets



### Directions:

Combine Shallots, garlic oregano, sugar, olive oil, red wine vinegar, lime juice, salt & pepper in a gallon size Zip-lock Bag. Shake to combine. Add the Tilapia and put in refrigerator for 2 to 4 hours, turning every 30 minutes. Preheat oven to 450 degrees. Line baking sheet with foil and use KP cooking spray or olive oil to coat. Arrange fish on prepared baking sheet. Discard remaining marinade. Bake until fish flakes easily, about 10 minutes.