



Thank you so much for making the Broza Concert Event a spectacular evening! It was amazing to share this sold out evening with 300 of our favorite people! More photos from the evening are available on the CBS website!



From the Rabbi's Study

Jewish Grandparents – More Valuable than Ever Before



When our patriarch, Jacob, is reunited with his son Joseph he proclaims: “I never even hoped to see your face...But now God has even let me see your children.” (Gen. 48:11).

The blessing that Jacob gives his grandsons, Ephraim and Manasseh, becomes the paradigm for all blessings of boys at the Friday night dinner table.

Former Chief Rabbi of the United Kingdom, Lord Rabbi Jonathan Sacks, writes of the relationship between grandchildren and grandparents that unlike that parent-child relationship, “There the relationship is one of love untroubled by tension or anxiety.”

Or, as I often say to grandparents: “The reason that grandparents and grandchildren get along so well is because they have a common enemy!” Often times, grandparents get to say “yes,” where parents always felt they

needed to say “no.”

In today’s day and age though, Jewish grandparents have an even more important role. Parents today – both of the Gen X and the Millennial generations – are busier than ever before. There are more families with two parents working out of the home. Children are more over-programmed than ever before. Synagogue as the primary social hub for Jewish families is diminishing in importance for many.

This means that the Jewish identity and the love of Jewish values that often exists with the grandparents becomes even more important. We are blessed to have many multi-generational families who come to programs together here like “Tot Shabbat,” “Rimon Friday Night,” and “Friday Night Lights.” This gives both Haz-zan Ben-Yehuda and I great joy to see grandparents, parents/children, and children/grandchildren together for Shabbat.

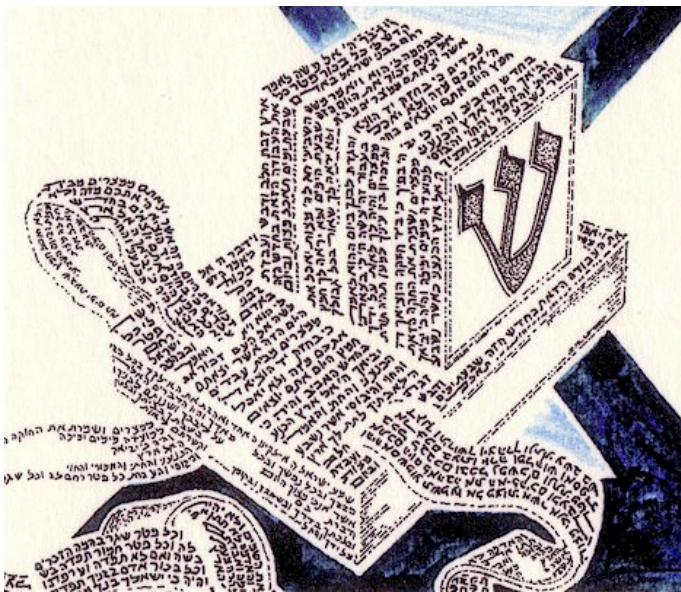
Sometimes, we even see grandparents who come just with the grandchildren – leaving the middle generation at home! Synagogue becomes a special outing for grandparents and grandchildren. I have also heard about *Shabbos* sleepovers at *Bubbe and Zayde’s* (or *Saba* and *Savta’s* or Grandma and Grampa’s). What memories those must be!

Unfortunately, we also have many families without local grandparents and without local grandchildren. Sometimes we lose grandparents to early deaths. Sometimes there is familial stress. Sometimes, work just takes us to new cities away from family. In these situations, that’s when synagogue family can step in. I want to encourage folks to find adopted grandparents and grandchildren in the synagogue. This can be a wonderful addition to holidays, Shabbat meals, and other celebrations.

David M. Glickman

Rabbi David M. Glickman
dglickman@bethshalomkc.org

World Wide Wrap

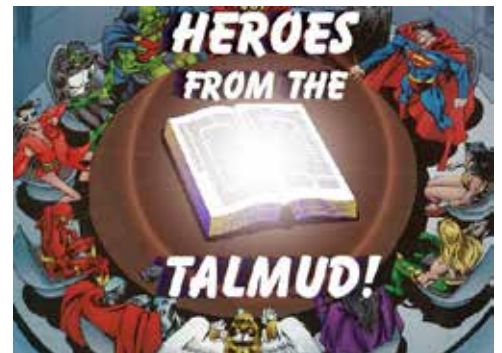


Our Men’s Club will be joining other Men’s Clubs and congregations around the world in the 17th annual World Wide Wrap on Sunday, February 5 at 9:30 am in the Conference Room. This event is a celebration of the mitzvah of wrapping tefillin.

A teaching session covering the art of wearing tefillin will be held. If you have your

own tefillin, bring them to this event. This opportunity to perform a mitzvah is open to everyone of all ages - men, women, boys and girls.

January Talmud Jams

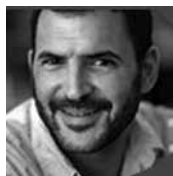


Talmud Jam South will meet on Wednesday, January 4 at noon at Black and Veatch. Downtown Talmud Jam will meet on Wednesday, January 25 at noon at Lathrop and Gage.

For more information or to RSVP, contact Trinity at 913-647-7281 or trinity@bethshalomkc.org.

Executively Speaking

Connection and Community



The evening of this December 31 will be a night full of ritual. Many of us will light a Havdalah candle, after which many of us will light Hanukkah candles—all eight! - after which many of us may even find ourselves at parties or watching some large ball drop to mark the beginning of that other new year. We all have reasons for incorporating ritual into our lives - as a way of heightening the humdrum or connecting to those around us; of finding meaning or community.

At CBS we know that there is indeed meaning in community, which is why the ritual committee is making ritual engagement a priority moving forward. This includes looking into how we can delve into the beauties of the liturgy on holidays and, in particular, explore new ways to boost the ruach and joy that is the essence of every Shabbat evening and morning service. As the year before us (5777 and 2017) unfolds, I'm excited about the ways we will start to put these ideas into practice.

I also want to offer a sincere *todah*

rabah to the many volunteers in our congregation that enable and enhance our ritual experience as service leaders, Torah and Haftarah readers, greeters, and gabbayim. From personal experience, I know that taking on an active role such as this—even just a short Torah reading a couple times a year—is a wonderful and fulfilling entry into greater ritual involvement. If you are interested in taking part, or sharing ideas of how we can continue to expand our view of ritual and ritual engagement, we would love to hear from you.

Victor Wishna

Ritual Vice President

Lechem

The CBS Lechem Committee has been a part of an interfaith effort to feed the hungry for over 33 years. To date, we have provided 147,393 meals to those in need. The Committee serves hot lunches, seven times a year at the Wilhelmina Service Center at 625 Nebraska Avenue from 9:45 am to 1:00 pm.

We want to take this opportunity to thank our incredible crew, totaling over 80 volunteers, who generously give of their time and energy to both

cook and serve these meals. Anyone, who is Bar/Bat Mitzvah age or older, is invited to join us to experience the camaraderie in the kitchen and to see firsthand how our congregation is helping to have a positive impact on the lives of others. Your generous and thoughtful donations to the Marcia Eveloff Lechem Fund help to keep the kitchen running and help us fulfill a mitzvah.

If you would like to volunteer to help cook the main entree before each

serving date in your own home or volunteer to serve lunch, please contact Cindy Daniels at 913-451-5852, rcdaniels@kc.rr.com or Marcy Rydell at 913-338-3399, Lechem Co-Chairs.

2017 Lechem Serving Dates:

Tuesday, January 31

Friday, March 31

Wednesday, May 31

Monday, July 31

Thursday, August 31

Tuesday, October 31

Monday, December 25

Parashat Hashavua

Parashat Hashavua is an ongoing, monthly program taking place every third Shabbat of the month at 9:00 am in the Conference Room. The goal of this program is to engage its participants in a stimulating discussion of the weekly Torah portion in a welcoming atmosphere, where the difference of opinions is respected, and questions



are encouraged. The participants enjoy the deep level of discussion and Kabbalistic insights into the text.

The next session will take place on January 21 when *Parashat Shemot* will be discussed. Everyone is welcome. For more information, contact Svetlana Sorkin at 913-393-1715 or saraliorasedu@hotmail.com.

Sisterhood

Berenice Haberman, President | shpres@bethshalomkc.org |

Invitation to Sisterhood Shabbat

Dear Congregants,

As Sisterhood president, I would like to take this opportunity to personally invite you to share Shabbat morning with us on February 11 for our annual Sisterhood Shabbat. Beth Shalom Sisterhood is the oldest auxiliary organization of this congregation, and we are having a celebration of our 93 years of existence.

This is a time when we honor our Sisterhood members, especially those who have graciously given both monetary gifts and the gifts of their time. We hope you can join us for this beautiful service and Kiddush luncheon. Sisterhood is looking forward to seeing you.

Berenice Haberman
President



Many of our Sisterhood Past Presidents

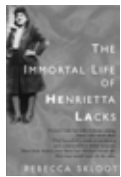
SISTERHOOD AND MEN'S CLUB PRESENT THE TRIAL OF THE CENTURY



Hear ye, hear ye, the trial of the century is quickly approaching. Sisterhood and Men's Club present another courtroom drama on Saturday evening, January 21, at 7:00 pm in Goldsmith Hall. Please join us as a U.S. judge and local attorneys lay out the evidence for both the defense and the conviction. We want YOU for the jury! YOU get to cast your vote and render the verdict. We hope you'll join us for an exciting evening with dessert and entertainment. The cost is \$10. Check your mailbox soon for the invitation!

Can you guess who is going to be tried in this courtroom drama? Some clues are: The killer stuttered. The killer hid the body in the sand. The person killed belonged to an ancient civilization. The killer caught the man he killed brutally beating another. The killer flees to another land. If you still can't guess the answer, come to the trial on January 21.

Book Club Meets on February 8



SH Book Club will meet on February 8 at 1:30 pm. (In case of inclement weather, February 15 is the backup date.) The location is the J in Conference Room B on the top floor across from the elevator. The book to be discussed is *The Immortal Life of Henrietta Lacks* by Rebecca Skloot. This *New York Times* nonfiction bestseller tells a captivating story of the collision between ethics, race, and medicine; of scientific discovery and faith healing.



Sisterhood Calendar/Directory Corrections



Page 12:

Ally Grant American University

Page 88:

Fishman, Mark (913) 451-2221
& Linda Gibian

Pg. 89

Gibian, Evelyn
5500 W 123 St #204
Overland Park, KS 66209



Page 91:

Haberman, Roger & Berenice
2543 W 146 Ter
Leawood, KS 66224
Bshaberman521@gmail.com

Page 101:

Rose, Mark & Julye
(913) 205-6142
4185 W 131 Pl
Leawood, KS 66209



Rose Family Early Childhood Education Center

Judy Jacks Berman, Director | jjb@bethshalomkc.org | 913-647-7287

Celebrate With a Shabbat Dinner

January is a great month to invite another family for Shabbat dinner and enjoy a warm delicious dinner with friends and participate in candle lighting and Kiddush. Shabbat dinner can be the traditional challah, soup, chicken, potatoes, vegetable and dessert or it can be a menu your kids help you prepare. Shabbat can be a pot luck dinner, too! What you serve is less important than everyone enjoying being together celebrating Shabbat.

You can make your challah from scratch or you can buy the Kineret or



Rhodes dough and let your kids shape it and make it or just pick up a challah at Hen House. If you need blessings they may be accessed on our website www.bethshalomkc.org. Your kids can make name place cards and help you set the table.

This is your opportunity to start your own family traditions, and I think your kids will look so forward to celebrating Shabbat. Please let me know if you celebrate Shabbat with another family for the first time and enjoy it! I'd love to hear about it.

Polsky Religious School

Hazzan Tahl Ben-Yehuda, Director of Congregational Learning | hazzantby@bethshalomkc.org

Gesher Shabbat – the Shabbat Bridge – Friday night, January 20, 6:30 pm



Gesher is the Hebrew word for bridge. A bridge physically brings people together. Have you ever wondered what brings us together and makes us a community?

There are three steps that go into creating a strong sense of group identification; belief, behavior, and belonging. As Jews, there are so many things we believe in - our shared history, our connection to Israel, our special way of struggling with God, of reading and studying our sacred texts and making sense of them in our times. We share the belief that we have an obligation

to leave the world in better shape than we found it.

Our beliefs lead to behaviors – we create communities where we can pray together, learn together, and do *chesed* together, acts of loving kindness. We teach our children and provide them with opportunities to continue to work for positive change in the world.

Our beliefs lead to behaviors and draw us together to instill in each of us a deep sense of belonging.

When a group of Jewish families comes together to eat Shabbat dinner, eating becomes uniquely Jewish. We welcome Shabbat before the festive meal. We bless the wine and collec-

tively wash our hands, as a hush falls over the room waiting for the *motzei* and eating the *challah*. Sharing food in this Jewish way binds us to each other.

Please join us for *Gesher Shabbat*, a community-building initiative of the Polsky Family Foundation grant to our PRS and Beth Shalom community. *Gesher Shabbat* is for all families with school-age children, as well as anyone in the shul who would like to come kvell over our families with school-age children! Dinner will follow the Kabbalat Shabbat service. Please RSVP via the link on the Weekly Eblast.

Sixth Grade Tallit and Tefillin Workshop

The final B'nei Mitzvah Workshop for sixth grade parents and students will take place on Sunday morning, February 5, from 10-11:30 am in room 108-09. Hazzan Ben-Yehuda will instruct our sixth grade families on the proper wearing of both the tallit and tefillin along with the rea-

soning behind both.

Rabbi Joshua Cahan writes, "Tefillin are not just objects. They are rich in symbolism, an ongoing, tangible sign of God's covenant. In their physicality they convey powerfully the essence of the religious experience. In binding God's words to our bodies, we

seek to devote our entire selves, mind, heart, and hand, to pursuing God's vision for the world."

Parents who have their own tefillin are urged to bring them to the workshop along with their tallitot.

For further information or to RSVP, contact Jill at 913-647-7286.

Youth & Informal Education

Stefanie Williams, Director | swilliams@bethshalomkc.org | 913-647-7292

Kinnus in Kansas City, Day by Day (Thanksgiving Weekend)

Thursday, following a high energy and ruach-filled opening plenary session, EMTZAniks enjoyed Thanksgiving dinner and with bellies filled, divided into teams to take on the Big City Hunt, an online based scavenger hunt around downtown Kansas City. Teams visited the Kaufman Center, sang their hearts out on the steps of the Sprint Center and visited the historic Muehlebach Hotel! USYers capped off the night with a "Just Dance" program, raising over \$600 for *Tikun Olam*.

Friday, following a Disney sing-along and Shacharit minyan, Jewish Vocational Services of Kansas City enlightened us about their work in welcoming new immigrant families to America. Inspired by our speakers, we put together more than 180 welcome bags to be distributed to new families that will arrive in our country in 2017. We hopped on busses for a picnic lunch at Liberty Memorial Park and walked across the street to enjoy Union Station and Science City. EMTZAniks welcomed Shabbat with a spiritual music-filled Kabbalat Shabbat service, a meaning-



ful *sicha* (discussion) about Judaism's views on alcohol and the need for personal responsibility and making good decisions. We concluded the night with Greek Week, where we celebrated the myriad of activities one might find on the college quad. We also had the pleasure of learning with USY's Central Shalicha, Michal Chacham, who led an amazing program on artist Amit Shimoni's "Hipstory" art collection and its relationship with Jewish leadership.

Shabbat Shacharit offered USYers five creative tefillah options ranging from Meditation to Star Wars, culminating in a Torah

Service and Musaf as a community. The afternoon was spent learning about Shimon Peres' legacy and our second *sicha* about building a Jewish life on college campuses.

Following spirited Shabbat afternoon singing (affectionately known as "slowach"), we ventured across the street from the hotel to Barney Allis Plaza for Havdalah. We capped off the night with a Toga Dance, Breakout KC's mobile escape rooms, and a late night performance by The Rockin' Rope Warrior.



Mark Your Calendars

Wednesday Night Programs – January 11, 18, 25
Winter Shabbaton in St. Louis – January 27-29

Winter Shabbaton

Who's always there for you when the rain starts to pour? You're EMTZA F.R.I.E.N.D.S. of course! This winter, meet us in St. Louis where we will embrace our inner Chandler, Monica, Phoebe, Ross, Joey, and Rachel as we explore the importance of having a close group of Jewish friends, and learn about the battle to confront anti-Semitism facing us today.

We are looking forward to seeing everyone in St. Louis January 27-29 for Winter Shabbaton!!! If you have not signed up yet, talk to Stefanie!

CELEBRATING LIFE CYCLE EVENTS

Ecclesiastes 3:1



Bar Mitzvah

Jed Morris Linafelt

January 21 / 23 Tevet



Jed's parents are Tom Linafelt and Julia Shapiro. Grandparents are Patti Shapiro and Jerry and Elizabeth Madden of Beaver, PA. Jed's sibling is Sid Linafelt.

Jed attends the Hyman Brand Hebrew Academy. He enjoys playing basketball, baseball and the guitar.

Relatives and friends are invited to worship with the family and attend the Kiddush Luncheon following services.

Happy Anniversary

January Anniversaries will be celebrated on January 21.

To sponsor a Kiddush contact Martha, 913-647-7283.

Day		Years
1	Jonathan & Denise Hankin	11
1	Jeffrey & Farrah Udell	5
2	Scott & Susan Krigel	40
2	Bryan & Janet Unterhalter	23
2	Victor & Annie Wishna	7
6	Daniel & Brodie Gold	15
6	Mark & Mara Lambert	9
6	Gary & Marcy Rydell	32
8	Donald & Sharon Cohen	61
8	David & Amanda Palan	11
8	Miles & Sally Ross	39
9	David & Sylvia Radasky	45
9	Jimmy & Sonia Rosenbloom	34
16	William & Jodi Rosenthal	34
20	Andrew & Vicki Widman	15
25	Jerry & Helene Ginden	52
25	Jeffrey & Arlene Misler	48
26	Alec & Emily Weisberg	9
28	Michael & Sharon Milens	50
28	Robert & Barbara Palan	49

Mazal Tov to...

Arthur and Margaret Berger upon the birth of their granddaughter, Eliana Ruth Berger.

Susan Hammer upon the Bat Mitzvah of her granddaughter, Illiana Hammer.

Harold and Linda Schlozman upon the birth of their granddaughter, Cleo Mathilde Schlozman.

Arlene Shalinsky upon the Bat Mitzvah of her granddaughter, Yael Dorit Stein in Jerusalem.

Maury Soltz in honor of his 80th Birthday.

Sponsor A Kiddush



A recent Kiddush has been sponsored by the family of Maury Soltz in honor of his 80th Birthday.

To sponsor a Kiddush contact Martha Hoffman at 913-647-7283.

Of Blessed Memory

We express condolences to our Beth Shalom Members, their Families and Friends.

Scott Russell Kanter, z"l, December 1 - 1 Kislev

Leona Cohn, z"l, December 4 - 4 Kislev

Toby Ellen Robbins, z"l, December 17 - 17 Kislev

Jeanette Wayne, z"l, December 17 - 17 Kislev

Yahrtzeits

Join us for morning or evening minyan to say Kaddish for your loved one. See service schedule, page 11.

3 Tevet - Jan. 1

Leah Boresow
Meyer Cohen
David Denebeim
Minnie Epstein
Edith Glaser
Jeannette Herowitz
Harry Hipsh
Jacob Karol
Edna Kort
Charles A. Lasky
Louis Rose
Sophie Taylor
Olga Wertheim

4 Tevet - Jan. 2

Anne Bender
Abe Blond
Doris Edelman
Nathan E. Funk
Harry Gorman
Joe Levine
Chaim Litwin
Wolf Peltzman
Ruth Planzer
Oscar S. Schaffer
Shale Waldman

5 Tevet - Jan. 3

Helen Cohen
Jennie Denebeim
Max S. Goodman
Gershon Hadas
Harry A. Kanter
Harvey A. Klein
Della Lerner
Annie Levine
Jacob Lewin
Adele S. Lipoff
Ida Loeffler

6 Tevet - Jan. 4

Judy L. Barash
Joseph Bernstein
Solomon Bortnick
Rebecca Friedman
Lillian Katz
Meyer Kornblum
Roy Kort
Peggy Krigel
Joseph Peltzman
Simon D. Shankman
Lena Silverman
Esther Silverstein
Hinda Waldman
Hanan Wedlan

7 Tevet - Jan. 5

Rebecca Greenblot
Flo Harris
Jennie Hoffman
Dora Levi
Fannea Lewis
Israel M. Linsitz
Sam F. Miller
Louis Peltzman
Hyman Rappaport

Rose C. Silverberg
Sara Weinberg

8 Tevet - Jan. 6

Lena Baranor
Charmaine Fredman
Clarence Gershon
Lily A. Ginsberg
Jeffrey F. Greenberg
Ben Jacobson
Hyman Junsberg
Ruth Lerner
Minnie Levine
Ruth Litvien
Edna Milens
Morris Rich
Joe H. Rutlader

9 Tevet - Jan. 7

Mary B. Adelman
Marjory Bergson
Helen Cohen
Rosa Dollman
Betty J. Ginsberg
Louis Goldfinger
Bessie Greenberg
Paul Hoffman
Joseph Horovitz
Jere Kaufman
Sarah Levin
Helene E. Present
Esther Salvay
Chana Sander
Ida K. Shure
Louis Walter

10 Tevet - Jan. 8

Morris A. Cohen
Simon Ginsburg
Fannie Goodman
William H. Greenberg
Gazella Gulinson
Eddie Jacobs
Lester Kahn
Anna Klein
Theodore Mack
Rachel M. Mesue
Max Pollock
Sam R. Price
Anna Rubin
Ben Stocker
Leah K. Weber

11 Tevet - Jan. 9

Meyer Eichenberg
Louis Ellis
Fanny Feingold
Hannah Funk
Louis Horovitz
Jack E. Jacobsen
Bessie P. Kars
Nathan Katz
Samuel Katzman
Pauline B. Klein
Celia Lieberman
Sam Nelkin
Ida Standland

Mordecai Taxman

12 Tevet - Jan. 10

Alvin Capito
Etta Kur
Henny Meyerhoff
Rose Ribakoff
Bella A. Sarno

13 Tevet - Jan. 11

Nathan Block
Isaac Chocron
Sidney Feinberg
Lillian Fox
Arthur Funk
Max Gordon
Harry Jacobs
Goldie Koden
Isreal Kosovitz
Dorothy F. Levy
Abe Rogell
Rose Singer
Sally N. Stoloff
Minnie G. Zalusky

14 Tevet - Jan. 12

Louis Barash
William Copaken
Elimelech Gordon
Harry A. Horovitz
Zissel Kamar
Jules E. Kohn
Fanny Krasne
Irving Malashock
Kate Meltzer
Harold Riss
Joseph S. Rittmaster
Cyd Sandelman
Morris Schneider
Sophia Walter
Isaac Zale

15 Tevet - Jan. 13

Sophia G. Adelman
Jacob Bernstein
Blanche Bloch
Louis Bronstein
Bessie Cohen
Simon Dubinsky
Jeanette F. Gidinsky
Mary Greenstein
Clara Gumowitz
Joseph Gutovitz
Sam Hipsh
Frank Katz
Max Klein
Abraham LaBow
Sarah Lesky
Frances Levitch
Samuel Lichtor
Sol Morris
Michael Rafiel
Bessie Rubenstein
Fannie P. Schick

16 Tevet - Jan. 14

Marvin J. Copeland
Herman L. Fabian

Rahle Gelhaar
Ike Grossman
Edward J. Kanter
Elsa G. Levin
Harry Levin
Rose S. Levine
Minnie Levy
Jacob Pfeffer
Israel Schlozman
Barney Stevens

17 Tevet - Jan. 15

Charles Berger
Lena Bergman
Rhonda DeLong
David S. Dolginow
Milton Franks
Ely Freed
Rose Geller
Ada Gershon
Betty Helfand
Rose Hershon
Emanuel Joffe
Samuel S. LaPort
Harry Levine
Marie Millstein
Harold Nicholas
Selma Reingenheim
Harry Yukon

18 Tevet - Jan. 16

Micah T. Bratt
Harry Byers
Anna Feld
Nathan Haith
Seena H. Kaufman
Charlotte Kline
Mamie H. Krigel
Bessie Rogozenski
Barney Stone

19 Tevet - Jan. 17

Harry Baier
Frances Berger
Freda F. Block
Jacob Cohen
Florence Denebeim
Sidney I. Glaser
Melvin N. Greenberg
Simon Kulvin
Frank Levin
Steve S. Pack
Michael Rosenbloom
Lena S. Smith
David Spellman

20 Tevet - Jan. 18

Albert K. Ball
Hayman Barewin
Sam Baum
Morris Brown
Boris Galitzky
Sarah Ginsberg
Harry Gitterman
Dorothy Gottlieb
Livia L. Halperin
Seymour D. Traxler

Morris Wolfson

21 Tevet - Jan. 19

Harriet Azorsky
Baila K. Baellow
Kelman L. Bovos
Arvie Goldstein
Henry Hakan
Daniel M. Hollub
Earl Katz
Isadore Marks
Esther Morris
Shirley Moskovitz
Benjamin Portman
Betty L. Shenker

22 Tevet - Jan. 20

Paul Bayzman
Max Benjamin
Gustav Einhorn
Jacob Grinpas
Arthur Harris
Sherry Kaplan
Isadore D. Levine
Mildred Lipsey
Badannah Silverman
Sidney Simon
Sarah Smith
Rita J. Tilzer
Bessie Turock

23 Tevet - Jan. 21

Martin Brenner
Morris H. Dunn
Bertha Dworkowitz
Bessie Ellis
Helen Feingold
Anna Grossman
Thelma House
Rose H. Jacobson
Daniel Markel
Solomon Rubinfire
Rachel E. Schere
Irving Schoenwald
Rebecca Schreiber
Mollie Schwartz

24 Tevet - Jan. 22

Roy Bisman
Robert Blond
Felicia S. Kisluk
Ella C. Lieberman
Rose Millstein
Leonard Rifas
Fannie Rothschild
Mary S. Taxman

25 Tevet - Jan. 23

Sam Barash
Gustave Eisemann
Gilbert Katz
Manuel Levine
Julia Liebershon
Archie Louis
Reuben Peltzman
Milton Silverman
Phillip Solomon

Fannie Spector
Rose Stology
Phillip Wider

26 Tevet - Jan. 24

Gussie B. Cohen
Yetta Czarlinsky
David Diamant
Sanford Krug
Otto Sherry
Stanley M. Siegel
Ben H. Simons
Stephen Wayne
Lena Wienshienk
Shlomo Yeshiah

27 Tevet - Jan. 25

Donald Alpert
Minnie Bayzman
Benjamin Finkle
Thomas A. Goldenberg
Jennie Gordon
Herbert Greenberg
Helen Kaufman
Victor Lerner
Louis Yudkowsky

28 Tevet - Jan. 26

Diana Altshuler
Sam Berman
Tavia Blender
Ida Bloom
David Brockman
Karl Eisemann
Jean B. Glazer
Abraham J. Granoff
David Hadas
Herbert Hakan
Rose Josephson
Daniel Katzman
Clara Kraft
Jacob Rabenowitz
Joseph Ruback
Anna Saver
Mushi Selichonok
Jerry Taube
Samuel Wallman

29 Tevet - Jan. 27

Joseph Biederman
Pauline Blonsky
Deanie Collins
Leo Eveloff
Margaret Goldman
William Goodman
Stephen J. Greenstein
Ruth Hyman
Raydelle Josephson
Wolf Kort
Israel Levin
Isaac Lieberman
Sherman Rozenblit
Sarah Smith
Isadore P. Stology
Richard Wasserman
Anna Wolberg

1 Shevat - Jan. 28

Joseph Greenblot
Essak Levitch
David Luke
Sophia Matzdorff
Abraham Osep
Abe Oshry
Nat Pfefer
Lee D. Seelig
Rose Seiffer
Marion Stology
Henry Walker

2 Shevat - Jan. 29

Herman Asotsky
Bruce Bovos
Della Fox
Paul J. Frischer
Rebecca Katz
Rose S. Kurtz
Helen Lieberman
Norman Yarmo

3 Shevat - Jan. 30

Jennie Abend
Morris Berman
Marvin Brown
Samuel R. Burnstein
Beila G. Dorfman
Gladys Eisman
Barney M. Friedson
Bertha Gershon
Dora J. Gerson
Isaac Gilgus
Harry Katz
Ksell Kusnetzky
Edmund Oelsner
Zelda Penner
Morris Rolsky
Anna R. Rosenblum
Milton Shapiro
Harry Sheskin
Libbie Wallman
Lois K. Weiner

4 Shevat - Jan. 31

Samuel Blond
Ida Cohen
Martin Finkelstein
Martha Forrest
Lillian E. Gelb
Nathan Golding
Kalman Grollman
Esther Hoffman
Isaac M. Isenberg
Rose Kahn
Michael H. Katz
Bertha Kowolsky
Bertha Matters
Philip Phillips
Ida R. Portman
Richard Rapaport
Rubin Shapiro
Max Trossman
Sheindel Yukon

Ada Hoffman Camp Ramah Scholarship Fund

In Memory of
Debby Cortés
Rabbi Alan & Linda
Cohen
Rafi & Michelle
Cohen
Florence Cortés
Carlos Cortés
Gary Cortés

Benjamin Ryweck Torah Fund

In Honor of
Annie Glickman's BD
Emma Salle's BD
Dolores Sosnow's BD
Joan March
In Memory of
Jacob Bratt
Ed & Rickie Haith
Marty Johnson
Janet Ryweck
Joan March
Miriam Schwartz
Susan Zale

Chesed Committee Fund

In Honor of
**Julia Tullman's Bat
Mitzvah**
Deborah Rosenberg

General Fund

In Honor of
Susie Goldsmith's BD
Craig & Amy Both
Morris & Carol
Solomon
Avi Silverberg's BM
Arlene Shalinsky
Carol Yarmo,
Kallah Bereshit
Herb & Barbara
Simon
In Memory of
Paul Alpersen
David & Carol Porter
Doris Baraban
Diane More
Dolores Benjamin
David & Brian Hakan
& Jane Lazzarescht
Joel Bock
David & Lynne Bock
Dorothy Bodker
Stanley Bodker
Emanuel Bornstein
Debrah Bokowski
Isadore Bressel
Jerold Bressel
Debby Cortés
Mike & Gloria
Azorsky
Ron & Susie
Goldsmith

Edward Goldstein
& Rachel Krantz
Mark & Mara Lambert
Sam & Roberta Goller
Mike & Cathy Schultz
Bob & Jean Zeldin
Yosaph Dagerman
Mary Dagerman
Max Dubin
Sol & Karen Dubin
Harry Eisman
Sanford Eisman
Hope & Marshall
Talbot
Rose Fried
Bobbie Bograd
Leebert Glass
Paul & Janet Leeds
Louis Grossman
Norman & Charlene
Meltzer
Jacob Haber
Ed Haber
Nathan Jagoda
Steven Jagoda
Ben Katzeff
Stanley Stern
Alice Lieberman
David & Rosalyn
Burnstein
Ben Planzer
Neil Planzer
Michael Rhodes
Mike & Gabrielle
Handler

Paul Rosenthal
Linda & Chuck Field
Florie Rosenthal
Max Rotman
Ross Tonkens
Miriam Schwartz
Ed & Laurie Chod
Fred & Marilyn
Firestone
Spencer & Elizabeth
Garland
Sorouch Haddad
& Kathryn
Bixby-Haddad
Mike & Nancy
McCamley
Janet & Jim Singer
Michael & Diane
Walsh
Leah Seiffer
Hyman Seiffer
Leonard Shopmaker
Nancy Morais
Anna Swartz
Jeffrey Chaikin
Ed Switow
Edward Goldstein
& Rachel Krantz
Anne Temple
Jerry Temple
Freida Umanskaya
Yakov Altman
Toby Waldner
Robert Waldner
Louis Zolotor
Robert Corchine
& Andrea Poisner

Beverly & Harvey Bodker Endowment Fund

In Memory of
Beverly Bodker
Fred & Cindy Bodker
Betsy Bodker
Harvey Bodker
Sadie Klein
Fred & Cindy Bodker
Betsy Bodker

Cemetery Maintenance Fund

In Memory of
Adell Alpern
Larry Cohen
Sydney Cerier
Stewart Cerier
Elaine Cheresksh
Howard Shapiro
Debby Cortés
Frank Lipsman
& Janet Mark
Jennie Fleschman
Sheldon & Jackie
Fleschman
Becky & Philip Glass
Ronald Ross
Jake Greenberg
Noreen Greenberg
Bertha Gutovitz
Joseph Gutovitz
Allen & Gail Gutovitz
Barbara Hoffman
Jerry Shapiro
Ross Tonkens
Walter I. March
Joan March
Rabbi Morris
Margolies
Ed & Rickie Haith
Sam & Molly Nagel
Jack Nagel
Estelle & Alfred
Parnes
Bennett Parnes
Pauline Spector
Rubin
Bernard Meyer Rubin
Linda Rubin
Paul Shapiro
Sheldon & Jackie
Fleschman
Ben Shapiro
Howard Shapiro
Morris Stein
Herb & Alice Stein
Dorothy Test
Jack Test
Fred & Toby Waldner
Bill Waldner
Max & Ethel
Wasserman
Larry & Linda Lessner
Sharon H. Weinstein
Marc & Linda Turner

Eugene & Shirley Novorr Tots for Torah Fund

In Honor of
Marjorie Jerwick's
Speedy Recovery
Shirley Novorr
In Memory of
David Ginsberg
Shirley Novorr

Frank Schlozman Scholarship Fund

In Memory of
Rose Kogan
Ida Schlozman
Frances Schlozman

Gale & Maxine Grossman Religious School Fund

In Memory of
Gale Grossman
David & Lynne Bock
Maxine Grossman
Louis Grossman
Maxine Grossman

Gershon Hadas Scholarship Fund

In Memory of
Anne E. Hadas
Hedva Glickenhauz

Hanan Wedlan Family Fund

In Memory of
Jerry Abrams
Eleanor Abrams
Mitch & Lisa
Hamburg

Harry Puritz Scholarship Fund

In Memory of
Harry Puritz
Carl Puritz

I & R Polsky Special Events Fund

In Memory of
Debby Cortés
Larry & Ellen Polsky
Elaine Polsky
Polsky Foundation

Jack J Margolis Family Shabbat Dinner Fund

In Memory of
Joseph Steinberg
Michael & Hue Green

Jacob H & Rose Levine Teacher Development Fund

In Memory of
Betty Rose Steinhaus
Art & Linda Levine

Kiddush Fund

In Memory of
Adell Alpern
Marvin & Carol
Goldstein
Arlene Shalinsky
Debby Cortés
Arlene Shalinsky
Louis E. Goldstein
Edward Switow
Marvin & Carol
Goldstein
Brett Weiner
Harold Kaseff
& Rhea Salasche

Mallin Childhood Enrichment Fund

In Memory of
Lillian Gilgus
Larry & Beverly
Mallin

Marcia Eveloff Lechem Fund

In Memory of
Sol Baum
Harold Kaseff
& Rhea Salasche
Leona Cohn
Judy Krug
Debby Cortés
Herb & Barbara
Simon
Marcia Eveloff
Sherri & Steve
Boresow
Ben Lerner
Alan & Tina Chapman

Marcus Brand Scholarship Fund

In Memory of
Sarah Ozar
Milton & Marilyn
Ozar

Max Benjamin Braille Teachers Fund

In Memory of
Delores Benjamin
Michael & Hue Green

Mendel & Sarah Small Fund

In Memory of
Mendel Small
Marshall
& Mary Small

Meyer J Pachter Video Library

In Memory of
Sarah Entin Kahn
Regina Pachter

Naman, Pollack, Block Youth Fund

In Honor of
Jeff & Cathy
Alpert's Ann.
Randy & Elyse Block
In Memory of
Debby Cortés
Randy & Elyse Block

Rabbi Alan L. Cohen Senior Rabbi Chair Fund

In Memory of
Rebecca Appel
Rabbi Alan
& Linda Cohen

Rabbi Glickman's Discretionary Fund

In Honor of
Susie Goldsmith's BD
David Gale
& Gina Kaiser
Gina Kaiser's BD
Ron & Susie
Goldsmith
In Memory of
Harry Baker
Ron & Susie
Goldsmith
Marvin Gibian
Mark Fishman
& Linda Gibian
Max Mendell
Larry & Phyllis
Kalender

Romotsky, Price, Cortés Genetic Testing Fund

In Memory of
Debby Cortés
Jeff & Cathy Alpert
Floyd & Bobbie
Babbitt
Al & Barbara
Beitchman
Loren & Marilyn
Berenbom
Seigfried Bingham,
P.C.
Irwin & Rita Blitt
Jack & Marcia Bloom
Betsy Bodker
Harvey Bodker
Dick & Charlotte
Brockman
David & Rosalyn

Burnstein
Marvin & Fran
Burnstein
Len Closen
& Melinda Corporon
Valorem Consulting
Group
Thomas & Beverly
Cranshaw
Bill & Eva Cummings
Rob & Cindy Daniels
Arthur & Diane
Federman
Twin Financial
Flekier Family
Lee & Amy Friedman
David Gale
& Gina Kaiser
Terry Garberg
David & Christine
Gerson
Gerry Goldberg
Marvin & Adelle
Goldstein
Marvin & Carol
Goldstein
Irving & Eva Gurin
Michael & Shelley
Gurin
Joe & Catherine
Hiersteiner
Laura Hockaday
Brita Horowitz
Dave & Judy Jacobs
Gloria Jaffess
Penni Johnson,
Susan Moehl
& Athena
Heironimus
Joseph Smuckler
& Marcia Karbank
Eric & Miriam Kaseff
Jeff & Carol Katz
Steve & Ellen Kort
Jason & Andrea
Krakow
Patti Kroll
Art & Linda Levine
Bob & Barbara Palan
Neil & Gloria Planzer
Gayla Brockman
Harold Kaseff
& Rhea Salasche
Joshua & Felice Saxe
Sandra Schermerhorn
& Martha Boyd
Bill & Marge
Schlosberg
Uri & Marlene Seiden
Ronald & Carol
Sekura
Merna Siegler
Francine & Dennis
Small
Neil & Blanche
Sosland
Dolores Sosnow
Stewart & Esther Stein
Robert & Penny
Steiner
Robert & Cheryl
Steinkamp

Donations Continued

In Memory of
Debby Cortés

Todd & Shirley
Stettner

Melissa Sturges

Donald & Kathryn
Tabor

Gary & Gail Weinberg
Steve & Lauren

Weinberg

Stan & Mary Weiner

Stan & Joyce Zeldin

Meyer Cortés

Gary Cortés

Rose & Sol Stolowy Fund

In Memory of
Debby Cortés

Sol Stolowy

Mike & Laurel

Rogovin

Rose Family Early Childhood Education Center

In Appreciation of

Rabbi David

Glickman

Deborah Rosenberg

Rickie Haith

Joyce Bratman

In Honor of

Andrew Flekier's BM

Susie Blackman

Rose S Levine & Doris L Flam Arts & Education Fund

In Memory of

May Shapiro

Tibor & Carla

Klausner

Ruby Fleider Choir & Music Fund

In Memory of

Dave Fleider

Lawrence Fleider

Sam & Esther Daniels Prayer Book Fund

In Memory of

Rose Fried

Donald & Ruthann

Zurovsky

Shirley S & Albert I Goller Camp Ramah Scholarship

In Memory of

Debby Cortés

Sharon Goldstein

Sylvan Siegler Scholarship Fund for Jewish Camping

In Memory of

Adell Alpern

Edward Switow

Merna Siegler

Balsamic Honey Chicken

Ingredients:

- 1/2 c. balsamic vinegar
- 2 tbsp. honey
- 1 1/2 tbsp. whole-grain mustard
- 3 cloves garlic, minced
- 2 c. baby red potatoes, halved (quartered if large)
- kosher salt
- Freshly ground black pepper
- 4 bone-in, skin-on chicken thighs
- 1 tbsp. chopped fresh rosemary
- 2 tbsp. extra-virgin olive oil
- 3-4 rosemary sprigs, for skillet

Directions:

Preheat oven to 425°. In a large bowl, combine balsamic vinegar, honey, mustard and garlic and season with salt and pepper to taste. Whisk until combined. Add chicken thighs and toss until fully coated. Transfer to the refrigerator to marinate between 20 minutes and one hour.

In a large bowl add potatoes and rosemary and season with salt and pepper to taste. Add one tablespoon olive oil and toss until combined. Set aside.

In a large skillet over medium-high heat, heat the remaining tablespoon olive oil. Add the chicken and sear skin side down two minutes and then flip and sear other side two minutes. Add the potatoes to the skillet and nestle between chicken and added rosemary sprigs. Transfer to the oven and bake until potatoes are tender and chicken is cooked through (approximately 20 minutes). Serve chicken and potatoes with pan drippings.



Happy Hanukkah



Hanukkah begins on December 24 after Havdalah and ends on January 1, 2017. The [blessings over the Hanukkah candles](#) can be found on the CBS website under Activities, Current Scroll. Happy Hanukkah from the CBS Staff.

Welcome to Our
Newest Members

- Benjamin & Sarah Baellow
- David & Amy Hersch
- Jeffrey Klein
- Kurt Knecht & Jennifer Rosenblatt
- David & Anya Kricsfeld
- Amos & Phyllis Leitner
- Janice Levy
- Benjamin Matis & Stefanie Stolzenberg
- Ross Tonkens

Congregational-Wide Events - See each department for their activities

Sunday	Monday	Tuesday	Wednesday	Thursday	Friday	Saturday
1 <i>Hanukkah</i> <i>New Year's Day</i> No PRS Classes 3 Tevet	2 Morning Services 8:00 am at Village Shalom No RFECEC CBS Offices Closed 4 Tevet	3 No RFECEC SH to Ronald McDonald Family Room 5 Tevet	4 No PRS Classes Talmud Jam South Warm Up America! 6 Tevet	5 No Peltzman Class 7 Tevet	6 4:54 Candle Lighting 8 Tevet	7 PJ Havdalah Party, 6:00 pm to 7:30 pm 5:55 Havdalah Shavuah Tov! 9 Tevet
8 No PRS Classes 10 Tevet	9 Board Meeting Sisterhood to Children's Place Troop 61 Eagle Court 11 Tevet	10 12 Tevet	11 SH Board of Directors Meeting 13 Tevet	12 Peltzman Class Men's Club 14 Tevet	13 Friday Night Lights 5:01 Candle Lighting 15 Tevet	14 <i>Birthday Shabbat</i> 6:02 Havdalah Shavuah Tov! 16 Tevet
15 No PRS Classes 17 Tevet	16 <i>Martin Luther King Day</i> No RFECEC CBS Offices Closed 18 Tevet	17 19 Tevet	18 PRS Parent/Teacher Conferences, No Formal Class 20 Tevet	19 Peltzman Class 21 Tevet	20 Gesher Shabbat & Dinner 5:09 Candle Lighting 22 Tevet	21 <i>Bar Mitzvah of Jed Linafelt</i> Anniversary Shabbat Sisterhood Winter Trial Program Parashat Hashavua 23 Tevet 6:10 Havdalah Shavuah Tov! 23 Tevet
22 Confirmation Pictures Being Taken Madrikhim Training Session 24 Tevet	23 25 Tevet	24 26 Tevet	25 Prayer Works Downtown Talmud Jam 27 Tevet	26 28 Tevet	27 KCUSY Winter Shabbaton 5:17 Candle Lighting 29 Tevet	28 KCUSY Winter Shabbaton Tot Shabbat & Shabbat Kids' Club 1 Shevat 6:18 Havdalah Shavuah Tov! 1 Shevat
29 KCUSY Winter Shabbaton 2 Shevat	30 3 Shevat	31 Lechem 4 Shevat				

Candle Lighting Blessing

ברוך אתה ה' אלקינו מלך העולם אשר קדשנו במצותיו וצונו להדליק נר של שבת.

Barukh ata Adonai Eloheinu melekh ha'olam, asher kideshanu b'mitzvotav vetzivanu lehadlik ner shel Shabbat.

January Service Schedule Shabbat CBS

Weekdays

Minchah:

Sunday-Thursday
6 pm

Shacharit:

Monday-Friday
7 am

Kabbalat Shabbat:

Main Service:

Library Minyan:

Minchah:

Minchah:

Minchah:

Minchah:

Shacharit:

Friday

Saturday

Saturday

January 7

January 14

January 21

January 28

Sunday

6:00 pm

9:30 am

9:30 am

4:54 pm

5:01 pm

5:09 pm

5:17 pm

8:00 am



Shabbat Services and Sunday morning Shacharit will be held at CBS, 14200 Lamar.

Weekday Minyan will be held at Appleman Synagogue, Village Shalom, 5500 W. 123rd St.

*Please Note: On Tuesday, Wednesday and Fridays, Ohev Sholom will join us for the Morning Minyan.



Congregation Beth Shalom
14200 Lamar • Overland Park, KS 66223
www.bethshalomkc.org
Office: 913-647-7279 • Fax: 913-647-7277

CONGREGATION Beth Shalom

David M. Glickman, Senior Rabbi
Hazzan Tahl Ben-Yehuda,
Director of Congregational Learning
Bernie Fried,
Interim Executive Director
Alan L. Cohen, Rabbi Emeritus
Judy Jacks Berman, Director, RFEC
Richard Simon, President
Bev Newman, Scroll Editor
Dahlia Berger, Scroll Design

The Congregation Beth Shalom Scroll (USPS531-420) is published monthly by Congregation Beth Shalom, 14200 Lamar Ave., Overland Park, KS 66223. Annual Subscription \$24.00. Periodical Postage Paid in Kansas City, MO.
DATED MATERIAL

POSTMASTER: Send address changes to CONGREGATION BETH SHALOM SCROLL, 14200 Lamar, Overland Park, KS 66223. Scroll Deadline: The 1st of the previous month. Submit articles to the Administrative office before the deadline.

Congregation Beth Shalom, an egalitarian Conservative synagogue, is a welcoming community of individuals from diverse backgrounds, strengthening connections with God, Torah and the Jewish people through communal commitment to prayer, study and acts of loving kindness.

Coming Attractions:

Scroll Deadline:
January 1 for February

Talmud Jam South
February 1

Downtown Talmud Jam
February 8

Sisterhood Shabbat
February 11

No PRS, Presidents Day Weekend
February 19

CBS Closed, Presidents Day
February 20

Rimon Baccalaureate Shabbat
February 24

Kadima Kinnus
February 24 - 26

PRS Kindergarten Round Up
February 26

Office Hours:

Monday - Thursday 8:30 am-5 pm
Friday 8:30 am-3 pm
Closed on Federal Holidays

Mt. Carmel Cemetery Winter Hours:

Monday, Wednesday 8 am - 4 pm
Tuesday, Thursday Closed
Saturday Closed
Friday & Sunday 8 am - 4 pm
National Holidays 9 am - 4 pm
Exceptions: Thanksgiving, Christmas Day, New Year's Day & Easter
Jewish Holidays Closed
Phone: 816-398-9290

Sisterhood Gift Shop Hours:

Monday-Wed. 10 am-2:30 pm
Thursday 10 am - 1 pm
Friday 10 am - 12 pm
Sunday 9:30-12 pm PRS Days Only
Other Hours by Appointment Only
913-647-7298

Tot Shabbat & Shabbat Kids' Club

Tot Shabbat and Shabbat Kids' Club will meet January 28 at 11:00 am. Join us for a fun-filled Shabbat with songs, prayers and a story. Prior to services there will be a snack for both groups near the Youth Lounge. Tot Shabbat meets in Room 111-112 and Kids' Club meets in Room 114. A kid-friendly Kiddush Lunch will be served after services. Would you like to sponsor an upcoming Kids' Kiddush? Tot Shabbat and Shabbat Kids' Club still have months available this year for sponsorship! Contact Miriam Farber at webe0314@gmail.com or Shira Wajcman at swajcman@gmail.com for more information. This program is underwritten by the Eugene and Shirley Novorr Tots for Torah Fund.

