

## 2017 High Holiday Schedule

**\*All services will be held at the JCC Campus except for Tashlikh\***

### Erev Rosh HaShanah – Wednesday, September 20

6:30 pm White Theatre

### 1st day of Rosh HaShanah – Thursday, September 21

8:30 am Traditional Service White Theatre  
with Rabbi Glickman & Hazzan Ben-Yehuda

8:30 am K-2nd Grade Programming CDC Common Area

8:30 am 3rd-5th Grade Programming ASK Room

9:00 am Family Service, ages infant-Pre-K Chapel

9:30 am Social Hall Service Social Hall

10:00 am Social Hall D'var Torah Social Hall

10:15 am 3rd-5th Grade Service Chapel

11:00 am Traditional Service D'var Torah White Theatre

11:15 am K-2nd Grade Service Chapel

4:00 pm \*Community Tashlikh Service

Park/Bridge behind Leawood City Hall

4800 Town Center Drive Leawood, KS

6:00 pm Minchah/Ma'ariv Service Social Hall

Candle lighting will be after 8:00 pm

### 2nd day of Rosh HaShanah – Friday, September 22

8:30 am Traditional Service White Theatre

8:30 am K-5th Grade Programming ASK Room

9:00 am Family service – ages infant-Pre-K Chapel

10:30 am K-5th Grade Service Chapel

10:00 am Rimon Service Social Hall

with Rabbi Glickman & Hazzan Ben-Yehuda

11:30 am Traditional Service D'var Torah White Theatre

6:00 pm Minchah/Erev Shabbat Services Social Hall

### Shabbat – Saturday, September 23

9:30 am Shabbat Services Social Hall

9:30 am Library Minyan Chapel (2nd floor)

6:56 pm Minchah/Ma'ariv/Havdalah Social Hall

### Erev Yom Kippur – Friday, September 29

6:30 pm Minchah/Kol Nidrei/Kabbalat Shabbat White Theatre

*Please plan on arriving early to ensure timely seating.*

### Yom Kippur – Saturday, September 30

8:30 am Traditional Service White Theatre

with Rabbi Glickman & Hazzan Ben-Yehuda

8:30 am K-2nd Grade Programming CDC Common Area

8:30 am 3rd-5th Grade Programming ASK Room

9:00 am Family Service, ages infant-Pre-K Chapel

9:30 am Social Hall Service Social Hall

10:00 am D'var Torah & Yizkor service Social Hall

10:15 am 3rd-5th Grade Service Chapel

11:00 am D'var Torah & Yizkor Service White Theatre

Yom Kippur Afternoon Learning Sessions TBD

11:15 am K-2nd Grade Service Chapel

4:35 pm Minchah/Ne'ilah/Ma'ariv White Theatre

7:35 pm Sounding of the Shofar & Havdalah White Theatre

**\*Please Note: Youth & Childcare Programming will conclude 10 minutes following the end of adult services. If your child will be staying past noon, please send a kosher dairy lunch.\***



### Erev Sukkot – Wednesday, October 4

6:00 PM Minchah Goldsmith Hall

### Sukkot, Day 1 – Thursday, October 5

9:30 AM Services Goldsmith Hall

11:00 AM Kids' Service Library Reading Area

Kiddush lunch in Goldsmith to follow for adults (catered)

Pizza bagels/cookie decorating in the Sukkah for youth

6:00 PM Minchah Goldsmith Hall

### Sukkot, Day 2 & Erev Shabbat – Friday, October 6

9:30 AM Services Goldsmith Hall

11:00 AM Kids' Service Library Reading Area

Kiddush lunch in Goldsmith to follow for adults (catered)

Pizza bagels/cupcake decorating in the Sukkah for youth

6:00 PM Kabbalat Shabbat Outside (weather permitting)

Kiddush Sukkah

7:10 PM Under the Stars Dinner Outside (weather permitting)

### Shabbat Sukkot – Saturday, October 7

9:30 AM Services Goldsmith Hall Only

6:34 PM Minchah/Ma'ariv

7:34 PM Havdalah

### Sukkot, Day 4 – Sunday, October 8

8:00 AM Services Goldsmith Hall

6:00 PM Services Village Shalom\*\*

**\*\*CHOL HAMOE'D SERVICES RETURN TO VILLAGE SHALOM ON THE EVENING OF OCTOBER 8 THROUGH THE MORNING OF WEDNESDAY, OCTOBER 11.\*\***

### Hoshanah Rabah/Erev Shemini Atzeret (PM)

#### Wednesday, October 11

6:45 AM Services w/ beating of the willows Goldsmith Hall

8:00 AM Breakfast in memory of Alec Bratt, z"l Goldsmith Hall

6:00 PM Minchah Goldsmith Hall

### Shemini Atzeret/Erev Simchat Torah – Thursday, October 12

7:00 AM Services w/Yizkor Goldsmith Hall

9:30 AM 2nd Service w/Yizkor Goldsmith Hall

6:15 PM Geshet Simchat Torah Library Reading Area

Family Dinner & Program

7:15 PM Ma'ariv in Goldsmith followed by Hakafot

(1st Hakafa for children)

7:30 PM Happy Birthday Sifrei Torah, Goldsmith Hall

celebrations and candy for all!

### Simchat Torah – Friday, October 13

9:30 AM Services Goldsmith Hall

Honoring Kallat Torah, Rita Cortés

& Chatan Bereishit, Alan Edelman

6:00 PM Minchah Goldsmith Hall

## Kallat Torah & Chatan Bereishit

This year Rita Cortés, Kallat Torah, and Alan Edelman, Chatan Bereishit, will be honored as congregational volunteers on Simchat Torah morning. Please join us on October 13 as we celebrate with our honorees.

Alan Edelman is a native of Kansas City and a lifelong member of Beth Shalom, having graduated from its nursery and Hebrew Schools. He attended Camp Ramah and served as USY chapter Chaplain, Membership Vice-President and President. He also served as Emtza Region Treasurer and President.

After receiving his Bachelor's Degree in Child Development and Education, including a year at Hebrew University in Jerusalem, Alan attended the Jewish Theological Seminary, where he received his Master's Degree in Jewish Education. He also holds a Master's Degree in Education Policy and Leadership.

From 1977-1980 he served as CBS Educational Director and then spent

two years as Regional Director of Central States/Provinces Region of USCJ.

On July 1, 1982 he became the Executive Director of the Central Agency for Jewish Education of Greater Kansas City (CAJE), a committee of the Jewish Federation. On October 1, 1994, Alan's responsibilities were expanded to include community planning, human resource development, identity and education and Israel/Overseas programming, serving as Associate Executive Director until his retirement last June.

Alan and his wife, Debbie Sosland-Edelman, have four children, Alex, Katja & Ari Fine and Jonathan.

Rita Cortés is a lifelong Beth Shalom member, having graduated from its nursery school and Hebrew School. She attended Camp Ramah, served as KCUSY President and Emtza Region Treasurer and President. In fact, Rita served as Emtza Treasurer

when Alan Edelman was Regional Director and attended religious school when Alan was Education Director.

Rita received her BA from Rice University, law degree from George Washington University and LLM in Taxation from UMKC.

Her professional experience includes working on Capitol Hill for Senator Bob Dole, Representative Jan Meyers, and Senator Jack Danforth; practicing law in the D.C. area; 18 years with Hoffman Cortés Contracting; and being a corporate law partner at Seigfreid Bingham. Rita currently serves as Executive Director of the Menorah Heritage Foundation, supporting the Foundation board in making grants to agencies in the Jewish and general Kansas City community. Rita has also been involved as a volunteer in a wide variety of non-profits. Rita is married to Mary McLean, and a doting aunt to her four nieces and nephews, Adam, Rachel, Eli and Miriam.

## 2017 Security & Parking

Each year, we must be diligent with our security procedures to ensure a safe environment for our congregants. There will be a very obvious police presence at the JCC during all services. There will be no admission without a ticket. If you do not



carry during the holidays, please check in at the door with one of our staff who will have a list of everyone who

has been mailed High Holiday tickets.

The JCC is closed for all other activities on the High Holidays, and all available parking spaces, with the exception of the area reserved for Pillar parking, may be used. The Sprint garages may not be used.

## 2017 Ticket Policy

- All members in good standing will receive tickets by mail. Your children under age 25 are free and do not require a ticket when attending services with you.
- Guest tickets are available online at \$175 each and will be mailed to either you or your guest, whichever you indicate.
- If your account is in arrears, please contact our bookkeeper, Pam Fite at

913-647-7271 to arrange a payment plan. If this is not feasible, please contact Bernie Fried at 913-647-7293. It is our mission for all congregants to be able to attend services irrespective of their financial situation as long as you contact Bernie before the holidays.

- Reciprocal Guest Tickets are available for those belonging to another Conservative Synagogue. Their home

synagogue must order the tickets for them. Guest ticket requests should be sent to Maggie Hultman at [maggieh@bethshalomkc.org](mailto:maggieh@bethshalomkc.org).

- For those who are not members, we have free Rimmon tickets to attend this service and free young family service tickets. Family services begin at 9:00 am and tickets must be picked up at the front desk of the Preschool prior to the holidays.

## High Holiday Honors for 5778 (2017)

If you would like to receive an honor for Rosh HaShanah or Yom Kippur, there are two ways to accomplish this:

Plan 1- Congregants are welcome to log on to our website at <http://bethshalomkc.org/2-ritual/hh-high-holiday-honors/> and fill out the form requesting an honor.

An email will be sent to you confirming your request.

Plan 2- Officers, board members and other volunteers will be calling congregants who celebrated a special

occasion in the past year such as a 50th wedding anniversary, a Bar or Bat Mitzvah or a special birthday. They will be offering those celebrants an aliyah in honor of those occasions. If you celebrated a special simchah and do not want to wait for a call, feel free to contact Jill at [jgoldstein@bethshalomkc.org](mailto:jgoldstein@bethshalomkc.org) or go to Plan 1.

Honors include Torah aliyot, ark openings/closings, English readings and carrying the Torah in either the processional or recessional. Questions, contact Jill at the above email address.

## Congregational Calendar Available at Rosh HaShanah Services

The 2017-18 congregational calendar/directory, a project of our Sisterhood, will be distributed on the first day of Rosh HaShanah, Thursday, September 21, outside both the White Theatre and the Social Hall at the JCC as you leave services. **Please redeem your calendar with the special calendar ticket included with your services tickets.**



If you are unable to pick up your calendar at this time, it will be mailed between the end of Rosh HaShanah and Yom Kippur. Sisterhood thanks you for helping save on mailing costs.

## Selichot Helps Prepare Us for the High Holidays

The community-wide Selichot program and service will take place on Saturday night, September 16, at Congregation Beth Torah. The evening will begin with a dessert reception at 8:00 pm followed by Havdalah at 8:45 pm. A creative, interactive performance of "The Sarah Play" produced by Jon Adam Ross, a playwright and performer, will be presented at 9:00 pm. The play is part of the InHeirance Project which explores modern interpretations of

Judaism's patriarchs and matriarchs. This presentation is brought to Kansas City by the J's Midwest Jewish Artists Laboratory.

The Selichot service will start at 10:10 pm and is designed to help worshippers begin to spiritually prepare for Rosh HaShanah and Yom Kippur by examining one's deeds of the past year and directing one's heart and mind to the process of *teshuvah* (repentance) and seeking forgiveness. The service will be led by area clergy

## Young Family Services

Linda Salvay will be leading the young family services once again for the High Holidays. The services will be in the Chapel upstairs at the campus from 9:00 to 9:45 am both days of Rosh HaShanah as well as Yom Kippur. Please call the preschool office with any questions,

913-647-7285. Linda Salvay discovered her love of Jewish music as a teen at Camp Herzl and in USY. She has performed as both a soloist and as a member of musical groups Shir Ami in St. Louis, and the Chai Singers and Yachad-The Traveling Tefillah Band in Kansas City. Her original

## Mt. Carmel Memorial Service

Our annual Mt. Carmel Cemetery High Holiday Memorial Service will be held Sunday, September 24, at 1:00 pm in the Yukon Chapel.

There will be time for visiting the graves of our loved ones following the service, and our caretakers, Jim and Bob, will be available to direct you to



the gravesites you may wish to visit.

Our tradition teaches us about the merit of praying by the graves of our loved ones, and we honor the beautiful custom of coming together for prayer, reflection and grave visitation during the High Holiday season.

For further information, contact Trinity at 913-647-7281.

and musicians. Services will also be held at Kehilath Israel at 11:00 pm and at Beth Israel Abraham and Voliner at 1:10 am.

For more information, visit [www.kcrabbis.org](http://www.kcrabbis.org) or contact Annette Fish, Rabbinical Association Administrator, [afprogram@aol.com](mailto:afprogram@aol.com) or 913-327-4622. The Rabbinical Association of Greater Kansas City sponsors the Selichot program with generous support from the Jewish Federation of Greater Kansas City.

compositions include a rendition of "Ani Ma-Amin" that was chosen from entries worldwide for inclusion in the eighth annual Chasidic Song Festival in Israel. Among her current musical endeavors, she enjoys Shabbat singing each week with preschoolers in the RFECEC.



# From the Rabbi's Study

## The Rabbi's Letter Home: Our Whole Hearts and Our Whole Souls



There are two places in the book of Deuteronomy where we see the words “heart and soul.” In the Shema, we are instructed to “Love the Lord your God with all your heart, with all your soul and with all your ability.” (Deuteronomy 6:5). Later in the same book we read: “The Lord your God commands you this day to observe these laws and rules; observe them faithfully with all your heart and soul.” (Deut. 26:16).

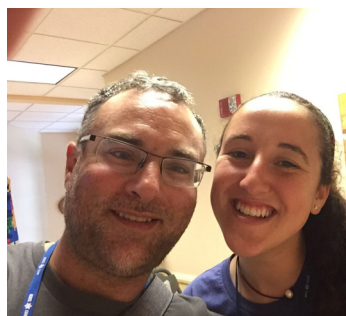
Jewish camp is the best place to live Jewishly with all your heart and soul. This year, Congregation Beth Shalom was blessed to have young people at Camp Sabra, the JCC camps here in KC, JCC Ranch Camp in Colorado, Herzl Camp, Ramah camps in Wisconsin, Colorado, Georgia and Northern California, USY, BBYO and NCSY trips to Israel, BBYO leadership camps... you name it! This summer I had the chance to visit our campers and staff at Herzl Camp and Ramah

Wisconsin. Below are just a few of the pictures. If you have pictures of your kids from a Jewish camp this summer, please email them to Maggie at [maggieh@bethshalomkc.org](mailto:maggieh@bethshalomkc.org) so we have more photos of our kids having a great time!

I hope that everyone had a great summer, and Annie joins me in wishing you and your family a joyful new year!

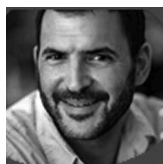
*David M. Glickman*

**Rabbi David M. Glickman**  
[dglickman@bethshalomkc.org](mailto:dglickman@bethshalomkc.org)



# Executively Speaking

## Approaching the Jewish New Year, 5778 By Victor Wishna



Wow, is it (almost) 5778 already? It might seem ridiculously obvious to point out what an important part of the calendar is upon us—three-plus weeks packed with the highest of holidays, from the opening shofar blasts of Rosh HaShanah to the reflection and t'shuvah of Yom Kippur, and onto the festivity of Sukkot and celebration of Simchat Torah.

For Beth Shalom, this has become the time of year when our entire kehillah convenes in such large numbers that we create another home away from home at the Jewish Community Campus. Rabbi Glickman and Hazzan Ben-Yehuda, with the support of dedicated staff and

dozens of volunteer leaders will oversee a range of services and programs, from the White Theatre to the Social Hall to the return of our popular Rimon service on the second day of Rosh HaShanah, offering different ways to connect as we all transition into another year.

This is a time of transition in another way. Alan Edelman, who this summer retired after 35 years of leadership at Jewish Federation of Greater Kansas City will also transition out of his role as *Shaliach Tzibur* for our High Holiday Social Hall services, a responsibility he has performed with wisdom and charm for nearly as long. We are incredibly grateful to Alan for his leadership and continual efforts to strengthen and enliven our community. We will have the chance to formally thank and honor him

and his family on Simchat Torah.

We are pleased to announce that Rabbi Jonathan Rudnick has agreed to fill the rabbinic duties for our Social Hall services. We are also thrilled to announce that *Yachad*, under the direction of Devra Lerner, is getting back together and will accompany Rabbi Rudnick on the first day of Rosh HaShanah.

Rosh HaShanah is, of course, a beginning to a year of Shabbatot, holidays, new programs and lifecycle events at Beth Shalom and we look forward to sharing them all together. May the moments of individual meaning and spirit of community that we are about to experience carry forward and continue into the weeks and months to come.

Wishing you a good and sweet year, *Shanah Tovah Umetukah*.

## From the Desk of the Director of Congregational Learning

Hazzan Tahl Ben-Yehuda, Director of Congregational Learning | [hazzantby@bethshalomkc.org](mailto:hazzantby@bethshalomkc.org)

### Shehechyanu Moments



When we wish each other "Happy New Year!" we think of January 1. When we see each other in school again for the first time after summer vaca-

tion, we ask each other "how was your summer?." When we see each other at shul for the High Holidays, we wish each other "Shanah Tovah." There are appropriate greetings for these and so many other special moments that come around year after year, helping us to mark the passage of time. These repeating yearly occasions which afford us the opportunity to recognize how far we

have come and to hope for the best going forward are "*shehechyanu* moments."

Those truly momentous, once-in-a-lifetime moments have prayers all their own — *shehechyanu* is for gathering again as a family to eat apples and round challah dipped in honey on Rosh HaShanah, for gathering as a community to celebrate Yom Kippur, for shaking the etrog and lulav again. It's for the first day of school, birthdays and anniversaries.

You may think of the *shehechyanu* prayer as one that you say any time something momentous happens, but that's not really what the *shehechyanu* is about. The *shehechyanu* prayer recognizes the cyclical nature of our

existence, and calls us to pause and be grateful to be in this moment again this year. It calls us to thank our creator for this moment, which is similar to the same time last year, but also different. It recognizes that between last year and this year so many things have happened, and yet we have survived and reached this time.

When we gather together for the first day of Sunday school on September 10th, and when we gather as a community to bring in Rosh HaShanah on the evening of September 20th, I will sing the *shehechyanu* with you, and I hope you know how truly grateful I am to be part of our Beth Shalom family. Shanah Tovah!

### Introducing New Membership Coordinator: Maggie Hultman

Maggie loves spending time with her family and friends. Her mom lives near the Lake of the Ozarks. She is the youngest of three children and has two older brothers, four nieces and two nephews.

Maggie is from Raymore, Missouri but moved to Webb City near Joplin in 8th grade. She graduated from high

school there, and after attending the local community college transferred to "Mizzou" to complete her bachelor's degree in 2008. At MU she majored in International Studies and also studied the role religion, tradition, culture, language and so much more play in our world.

Maggie's professional background is in sales, customer service, the service industry

and administration. She was hired by CBS to fill in for Rabbi Glickman's Administrative Assistant while she was out on maternity leave.

Maggie states, "Never dreaming, I'd be welcomed so kindly by staff, clergy and members. I'm delighted to take on the role of Membership Coordinator. Please come by and say hi. I love people and I'd love to get to know everyone!"



# Sisterhood

Carol Yarmo, President | [shpres@bethshalomkc.org](mailto:shpres@bethshalomkc.org) |

## Sarah Peltzman Adult Education Classes

The Sarah Peltzman Adult Education Classes for 2017-18 will begin on Thursday, November 2, from 10:00-11:30 am in Goldsmith Hall. The offerings for the classes will come from the "Project zug.org" website. The cost is \$36.00 for each participant (or \$46.00 per couple) for each course. Participants have the option of downloading the course materials from "[Project zug.org](http://Project zug.org)", or paying an extra \$5.00 to purchase the materials copied and collated by volunteers. Our teachers will be Rabbi David Glickman and Hazzan Tahl Ben-Yehuda. The classes are open to the community. Payment to register may be sent to Suzanne Lange, Education Vice-President, 3020 West 27th Street, Lawrence, Kansas 66047. Checks should be made out to Beth Shalom Sisterhood.

The course for the first session, which will run from November 2 to January 18, will be Judaism: Identity, Pluralism and Peoplehood. The course for the second session, which will run from February 1 to May 11, will be

The Prayerbook: New Interpretative Methods. Students wishing to study more in depth will be able to go online to "[Project zug.org](http://Project zug.org)" for more information. Judaism: Identity, Pluralism and Peoplehood will discuss whether Judaism is primarily an ethnic or religious identity. Students will discuss how to work with Jews with whom we disagree and how to preserve their ideological integrity while understanding the perspectives of others. Participants will also investigate the boundaries and definitions of Jewish peoplehood and how to maintain the delicate balance between their responsibilities to themselves and to other Jews.

The Prayerbook: New Interpretative Methods will examine the many prayers composed over the years that comprise our prayerbook. Students will learn what the prayers actually mean and learn to relate to them in a more personal way. Participants will look at the prayerbook differently and investigate the Shabbat and weekday prayers to achieve deeper meaning.

## Sisterhood Presents: Change Is Part Of Life

How do you adapt to changes in your life? We all face change, no matter what age we are. To quote Heraclitus, a Greek Philosopher, "The only thing that is constant is change."

Don't miss the Fall Membership Luncheon, Tuesday, September 12, 2017 at 11:30 am in Goldsmith Hall. Our dynamic speaker will be Debra Orbuch Grayson, a Licensed Clinical and Family Therapist, who will facilitate an interactive discussion

about life changes and how we can better adapt to them.

Attendees are requested to bring personal care items which Sisterhood members will use in preparing holiday gift bags for clients of Jewish Family Services. Items can be sample or regular size and don't forget those cosmetic bags that we often get.

The cost of the luncheon is \$15 for members and \$20 for guests. Mail your check made out to Beth Shalom Sisterhood to Wendy Malyn at 11504 Grant Lane, Overland Park, KS 66210.

## Sisterhood is Featuring Lena's Mandelbrot & Carries Mitzvah Garden Honey



The High Holidays are just around the corner and Sisterhood is featuring Lena's Mandelbrot. Mandelbrot is great for dessert. It also is super with coffee, tea

or for a snack.

Sisterhood is taking orders for [Lena's Mandelbrot](http://Lena's Mandelbrot) for delivery by September 15, just in time for the Holidays. The cost is \$10.00 for 2 dozen and can be purchased with or without nuts. Order forms are available on the Beth Shalom website and can be mailed to the synagogue marked Mandelbrot, or you can

pick up an order form, located at the front desk in the office, and place it in the envelope with your check marked Lena's Mandelbrot. Checks should be made out to Beth Shalom SH.

Our Sisterhood Gift Shop carries locally produced Mitzvah Garden Honey. The Mitzvah Garden installed two beehives and they have produced delicious local honey for you to enjoy. Twelve ounce honey jars are available for purchase and are certified kosher. They make a great hostess gift and you'll be doing a mitzvah! Everyone wants honey to usher in the New Year. We also carry apple and honey dishes and shofars.



## SH Book Club Meets October 18

Sisterhood Book Club will meet on Wednesday, October 18 at 1:30 pm at the JCC in the large boardroom on the main floor. The club will be discussing *The Septembers of Shiraz* by Dalia Sofer. "In the aftermath of the Iranian revolution, rare-gem dealer Isaac Amin is arrested, wrongly accused of being a

spy. Terrified by his disappearance, his family must reconcile a new world of cruelty and chaos with the collapse of everything they have known."

For more details or to attend, contact Linda Lessner at 913-897-0122 or at [llessner@kc.rr.com](mailto:llessner@kc.rr.com).

## Thank you, Bev Newman for All You Have Done

Can you retire from a volunteer position? You bet you can.

For the past eleven years, we have been blessed to have Beverly Newman volunteer her time and energy as the editor-in-chief, publisher, and heart and soul of *The Scroll*. She has sacrificed family time and personal time to ensure we produce a quality communications tool each and every month.

For all of this, we owe her a great deal of gratitude. So, with a heavy heart, we say goodbye to our mentor and friend, Bev Newman. Bev, you have earned the right to join Peter on a relaxing journey through the rest of your life, a long life to be sure. We have learned much from you, and will carry on beginning with the September *Scroll*. Safe travels and thank you.

**Bernie Fried**

Executive Director

**David Glickman**

Senior Rabbi



## Youth & Informal Education

**Stefanie Williams, Director** | [swilliams@bethshalomkc.org](mailto:swilliams@bethshalomkc.org) | 913-647-7292

We are so excited to start a new, fabulous year filled with exceptional programming, new friendships and great fun!! In case you are new to the Youth Department at CBS, below is a little background information.

KCUSY, our 9-12 grade youth group, is an award-winning chapter of United Synagogue Youth. We bring teenagers together around organized activities that promote learning, fellowship, leadership and responsibility. Our goals also include a better understanding of Conservative Judaism, involvement in the synagogue and community at large, as well as incorporating how to live a Jewish life in the secular world. The programs are created by our teens and allow them to gain insight into their Judaism while meeting other Jewish teens and having a blast! Programs are a mix of social, cultural, religious, community

service, fundraising and fun activities.

As a part of EMTZA Region USY, we have several opportunities to join our counterparts throughout the Midwest! See old friends, see camp friends or make new friends at our conventions. This year's regional schedule will kick-off with Kinnus in Minneapolis November 23-26! Let us know if you have any questions!

Youth can find out what is going on by looking on the KCUSY Facebook Page or on our Instagram account! We also have a group texting system called Remind 101, where our youth can get weekly texts or our events on their cell phones. Our September programs will be on Wednesdays, September 6, 13 and 27!

## Rose Family Early Childhood Education Center

**Judy Jacks Berman, Director** | [jjb@bethshalomkc.org](mailto:jjb@bethshalomkc.org) | 913-647-7287

### Fall is here and we are off to a great start of a new school year!

Larvae will be delivered and the children will watch as the caterpillars hatch and then spin their chrysalises. The miracle of a butterfly emerging is so exciting to see.

After enjoying watching the butterflies for a week, the children will get to release the butterflies and say good bye butterflies and watch as they fly away and explore our garden.

We plant an organic garden 3 times a year, spring, summer and fall so the kids can plant vegetables, watch them grow, water them, and eat them for snack. This is very exciting, especially for the child whose family does not have a garden. All the

children love planting and taking care of our garden.

In the Pre-K classroom we have a salt water aquarium with fish as well as living coral. The children take care of the aquarium and every month Hazzan Ben-Yehuda teaches the children about salt water aquariums and caring for them.

Teaching children about nature and science in such hands-on concrete ways help children develop a love for science as well as strengthens their natural sense of awe in their beautiful world around them!

## Of Blessed Memory

We express condolences to our Beth Shalom Members, their Families and Friends.

*Eugene Smith, z"l, August 8 - 16 Av*

*Sonja Silver-Dunbar, z"l, August 10 - 18 Av*

*Charles Michael Hiller, z"l, August 10 - 18 Av*

*Sharon Valinsky Fagin, z"l, August 20 - 28 Av*

## Plaques Have Been Dedicated In Memory Of...

### Yahrtzeits

Join us for morning or evening minyan to say Kaddish for your loved one. See service schedule, page 11.

#### 10 Elul-Sept. 1

Reva Bernstein  
Samuel Copelman  
Melvin Frischer  
Harry Geller  
Clara Gorman  
Esther Jaben  
Morris B. Penner  
William Rosenberg  
Sam Sheftel

#### 15 Elul-Sept. 6

Abe Bergman  
Olga Bruller  
Selma S. Feld  
Suzanne J. Geller  
Bessie Ginsberg  
Rose Markowitz  
Linda T. Siegel  
Sanders Sosland  
Sender Szajnfeld

Fred S. Goldsmith  
Minnie L. Hauser  
Selma Joseph  
Sol Kaplan  
Abraham B. Passman  
Bertha Rosenberg  
David Schuster  
Flora R. Widlansky

#### 21 Elul-Sept. 12

Benjamin B. Aaron  
Joseph Bronstein  
Meyer Cohen  
Reuben Finkelstein  
Milton Forman  
Evelyn Greenberg  
Louis Hammer  
Violet D. Hoffman  
Lieb Lieberman  
Robert Shapiro  
Joseph H. Siegel  
Norman Weinstein  
Edward Wolberg

#### 22 Elul-Sept. 13

Albert Bell  
Moris Copaken  
Hanan Eisen  
Gertrude Gandal  
Joseph D. Greenbaum  
Harold L. Joseph  
Tamma Perlmutter  
Annie Picker  
Louis Portman  
Beryl Rubenstein  
Rachel Schwartz  
Samuel L. Siegel  
Margaret Weinstock

#### 23 Elul-Sept. 14

Rose Barabechik  
Florence Byer  
David Cohen  
Daniel L. Feingold  
Leah Gandal  
Yudas Graves  
Zelda Lerer  
Rose Levine  
Ben Penner  
Fannie Rich  
David Sanell  
Sol Schorr  
Ida R. Steinberg  
Mildred Supofsky

#### 24 Elul-Sept. 15

Eva Copeland  
Abraham Frost  
Ben Gordon

Lillian Kanter  
Gus Minkin  
Norman Polsky  
Sherwin N. Salasche  
Isaac Vogel

#### 25 Elul-Sept. 16

Esther Cohen  
Albert A. Diamond  
Jacob H. Gilgus  
Martie Greenberg  
Blanche Lerner  
Samuel E. Segelbohm  
Sylvan Siegler

#### 26 Elul-Sept. 17

Saul Bitner  
Lena Glazer  
Max Hoffman  
Millie K. Levy  
Louis S. Sachs  
Leo Schleifstein  
Coralee Snyder  
Baily Taxman  
Daniel Tucker

#### 27 Elul-Sept. 18

Emil Barsky  
Mayme E. Becker  
Edwin Chambers  
Arthur Frank  
Rose Lieber  
Rebecca Louis  
Rose Milens  
Frank Soltz  
William Stein  
Ida Swerdloff

#### 28 Elul-Sept. 19

Jenny Blum  
Morris Cohen  
Karl Copelman  
Joe M. Dunn  
Michael Fingersh  
Maurice Horowitz  
Harry Kisluk  
Blanche Marks  
David Parelman  
Arnold Parnes  
Harry Stevens  
Sarah Summers  
Bernard C. Unger  
Esther Weiner

#### 29 Elul-Sept. 20

David Blond  
Allene Carroll  
Sol E. Dennis  
Sidney Erdman

Paul Gilgus  
Leon C. Grossman  
Rose Kosovitz  
Harry J. Oshiver  
Samuel I. Oshiver  
Ralph Rosenberg  
Irving Schoen  
Robert Seiffer  
Rae Silberman  
Mezeh M. Viner

#### 1 Tishrei-Sept. 21

Bessie Berman  
Samuel M. Bigus  
Annie Bortnick  
Daniel Brenner  
Berl Chaba  
Fayge Chaba  
Paul Cohen  
Arthur Epstein  
Dora Finkelstein  
Frances C. Fogel  
Akiba Garowitz  
Eli Gershon  
Harry Gilbert  
Arlene Grossman  
Pearl P. Hoffman  
Lipman Kopinsky  
Moses Kopinsky  
Sascha Kopinsky  
Toibe Kopinsky  
Zelig Kopinsky  
Mamie Kraft  
David Levin  
Jeanette K. Levine  
J. David Pittell  
Hannah Present  
Ruben Seigel  
Fannie Shapiro  
Dora Stanborm  
Morton Swartz

#### 2 Tishrei-Sept. 22

Tammie Fingersh  
Morris Hans  
Paul Jaben  
Marjorie R. Kantor  
Zelda Kross  
Ella Lustig  
Milton Malamud  
Irving Millstein  
Jerry S. Penzner  
Thelma Rosenberg  
Frank Schlozman  
Louis Silberg  
Lena Sorkin

#### 3 Tishrei-Sept. 23

Sarah Behrman  
Dora S. Dekro  
Joseph Dekro  
Isaac Ducov  
Jennie Gorman  
Morris Kort  
Samuel Kort  
Morris Litvian  
Max Navran  
Gitla Posmantier  
Anna R. Sandhaus  
Juliette Seiden  
Lazarus Smith  
Joe Wolberg

#### 4 Tishrei-Sept. 24

Anne Baum  
Max Berman  
Ida Devins  
Liba Falus  
Sol Ginsberg  
Cecil Kaminsky  
Harry Kaplan  
Esther Levine  
Myer Lieberman  
Etta Magazine  
Sidney Magazine  
Jean S. Robin  
Khaya Schuster  
Sylvia L. Traxler

#### 5 Tishrei-Sept. 25

Rita Bayless  
Jack Bohm  
Philip Herowitz  
Jacob Hyman  
Herman Koch  
Rose Rapaport  
Ben Rosenberg  
Joseph J. Singmon  
Anna L. Stolor  
Morris Traxler

#### 6 Tishrei-Sept. 26

Esther Becker  
Evelyn S. Brown  
Sara Davidow  
Rose R. Goldberg  
Minnie Gordon  
Marian Hermanson  
Sarah B. Myron  
George C. Newberg  
Dorothy A. Novorr  
Sadye Rubinfire  
Albert Saver  
Abraham Steinzeig

Herman Tweed  
Isaabel S. Viner

#### 7 Tishrei-Sept. 27

Lisa G. Barash  
Nellie F. Coleman  
Aida Gilgore  
Fannie Karosen  
Anna R. Koppel  
Sherburne Krieger  
William Jack Newton  
Frieda Schlein  
Jack I. Shear  
Gertrude Weneck

#### 8 Tishrei-Sept. 28

William B. Berkowitz  
Benjamin Brand  
Minnie Frischer  
Golda House  
Flora Pelofsky  
Joe Rubin

#### 9 Tishrei-Sept. 29

Esther Gibian  
Rebecca L. Grossman  
Baruch J. Harding  
Miriam G. Harding  
Ida R. Katzman  
Samuel Kopel  
Melba Levine  
Sol Lipsey  
Sam Marcus  
Ethel Markowitz  
Jacob Risburd  
Louis Rosenberg

#### 10 Tishrei-Sept. 30

Samuel Brockman  
Akiba Byers  
Velie Dubinsky  
Nettie Feinberg  
Meyer Finkelstein  
Sarah Gardesky  
Eli Grossman  
Elsa Gundelfinger  
Isaak Levine  
Harold L. Marks  
Joseph Moskowitz  
Edith Pinsky  
Harry Rubenstein  
Prywa Salzenstein  
Freidel Schwartz  
Jacob Schwartz  
Nathan Schwartz  
Sashe Schwartz  
Israel Weinstein  
Nessy L. Weinstein



## Benjamin Ryweck Torah Fund

*In Honor of*  
Linda Cohen's  
Birthday  
Rabbi David & Annie  
Glickman's 21st  
Wedding Ann.  
Susan F. March's  
Birthday  
Rabbi Lewis  
Warshauer's  
Birthday  
Joan March  
*In Memory of*  
Elizabeth Bohm  
Joan March  
Frank Goldstein  
Walter Harris  
Ted & Jill Goldstein  
William Haith  
Hyman Schere  
Sarah Schere  
Edward & Rickie  
Haith  
Joel Vile  
Marvin & Janice  
Finkelston

## Beth Shalom General Fund

*In Honor of*  
Judge Arthur  
Federman's  
Retirement  
Edward Goldstein  
& Rachel Krantz  
Rabbi David & Annie  
Glickman  
Cara Krashin  
Sid Kanter's 70th  
Birthday  
Johanna Stein  
*In Memory of*  
Marie Bernstein  
Robert Smith  
Elizabeth Bohm  
Harriett Charno  
Lauren DiMeglio  
Richard & Abby  
Elbaum  
Pamela Klumb  
Neil & Blanche  
Sosland

Barbara Enslein  
Jerald Enslein  
Ronah Epstein  
Joseph Lesser  
Don Finestone  
Linda Finestone  
Della Glass  
Paul & Janet Leeds  
Bessie Goldberg  
John Goldberg  
& Marla Brockman  
Morton Hurst  
James Algje  
Harriett Charno  
Melvin & Sibby  
Cosner  
Renee Haith  
Mike & Anne Jacobs  
Jerold & Robin Kaplan  
Rae Jacobs  
Dave & Judy Jacobs  
Ida Joseph  
Shirley Beiser  
Donald Kopin  
Milton Mann & Irene  
Goodman  
Jake Lazarus  
Harold Levine  
Max Lerer  
Jerry & Barbara  
Cosner  
Sam Levy  
Abe & Marlene Kopec  
Beverly Mann  
Milton Mann  
Irving Nasaw  
David Nasaw  
Renetta Prebluda  
Jonathan & Ellen  
Chilton  
Stanley D. Rostov  
Irvin Belzer  
& Sue Mccord-Belzer  
Judy Belzer-Weitzman  
Frances Sandler  
Bettye Balkin  
Jerome Schneider  
Alan Schneider  
Esther Shapiro  
Marietta Dunn  
Morris Shenker  
Hanan Steinzeig  
Helen Spector  
Harold & Natalie  
Klopper

Rose Waldner  
Marvin & Janice  
Finkelston  
Rose Zurovsky  
Gert Epstein

## Beverly & Harvey Bodker Endowment Fund

*In Memory of*  
Morton Hurst  
Fred & Cindy Bodker  
Betsy Bodker

## Boy Scout Troop 61

*In Memory of*  
Etta Bayzman  
Mark Bayzman

## Building Fund

*In Memory of*  
Morton Hurst  
Hanan & Natalie  
Hammer

## Cemetery Maintenance Fund

*In Honor of*  
Isaac Zale  
Susan Zale  
*In Memory of*  
Isadore Fleschman  
Sheldon & Jackie  
Fleschman  
Bessie Goldberg  
Gerry Goldberg  
Retha D. Lisman  
Harvey & Cyndi  
Zidell  
Morris Sedler  
Lula Sedler  
Richard Sedler

## Dave & Jean Brockman Scholarship Fund

*In Honor of*  
Richard Brockman's  
85th Birthday  
Estelle Pinsky

## Eleanor & Joseph Kopin Endowment Fund

*In Memory of*  
Donald Kopin  
Rob & Cindy Daniels

## Eugene & Shirley Novorr Tots for Torah Fund

*In Memory of*  
Morton Hurst  
Shirley Novorr  
Keith & Vicki Novorr  
Donald Kopin  
Shirley Novorr

## Florence & Meyer Kaplan Sukkot Festival Fund

*In Honor of*  
Birth of Alexander  
David Kaplan  
Florie Kaplan  
*In Memory of*  
William Kaplan  
Florie Kaplan

## Gale & Maxine Grossman Religious School

*In Memory of*  
Charles Bass  
Marty Bass  
Maxine Grossman

## George B & Marian Durbin Prayer Book Fund

*In Memory of*  
Morton Hurst  
Jeff & Carol Katz

## Hazzan Ben-Yehuda's Discretionary Fund

*In Memory of*  
Elizabeth Bohm  
Ed & Rickie Haith  
Marian Shapiro  
Rita Shapiro

## Jacob & Rose Szneler Scholarship Fund

*In Memory of*  
Morton Hurst  
Marvin Szneler

## Jacob H & Rose Levine Teacher Development Fund

*In Memory of*  
Sharon Fagin  
Art & Linda Levine  
Peter & Bev Newman  
Morton Hurst  
Sheldon & Jackie  
Fleschman

## Karbank Family Fund

*In Memory of*  
Donald Kopin  
Mark & Diane  
Davidner

## KCUSY

*In Memory of*  
Morton Hurst  
Steve & Milisa Flekier

## Kiddush Fund

*In Memory of*  
Elizabeth Bohm  
Esther Goldstein  
Donald Kopin  
Marvin & Carol  
Goldstein  
Sharon Fagin  
Ed & Rickie Haith  
Joe Posner  
Marvin & Carol  
Goldstein  
Scott & Debra  
Goldstein

## Louis & Edith Pinsky

*In Memory of*  
Louis Pinsky  
Dick & Charlotte  
Brockman  
Estelle Pinsky

## Marcia Eveloff Lechem Fund

*In Honor of*  
Audrey Brand's  
Bat Mitzvah  
Dolores Sosnow  
*In Memory of*  
Harriet Dubinsky  
Jerry & Barbara  
Cosner  
Serena Tabolsky  
Eisman  
Hope & Marshall  
Talbot  
Morton Hurst  
Herb & Barbara  
Simon  
Donald Kopin  
Judy Krug  
Louis Lieberman  
David & Rosalyn  
Burnstein

## Naman, Pollack, Block Youth Fund

*In Memory of*  
Elizabeth Bohm  
Morton Hurst  
Randy & Elyse Block

## Prayer Book Fund

*In Memory of*  
Alexander F. Muller  
Max & Charlene  
Muller

## Rabbi Glickman's Discretionary Fund

*In Appreciation of*  
Beth Shalom Staff  
Kenneth & Karen  
Glickman  
*In Memory of*  
Morton Hurst  
Ed & Rickie Haith  
Robert Kalender  
Frieda Mendell  
Larry & Phyllis  
Kalender  
Donald Kopin  
Clarence & Alice  
Winer

Max Shapiro  
Rita Shapiro

## Rose Evelyn Sporn Primary Fund

*In Memory of*  
James Kunellis  
Inez Kaufman

## Rose Family Early Childhood Education Center

*In Honor of*  
Jean Zeldin's 70th  
Birthday  
Susie & Paul Blackman  
*In Memory of*  
Morton Hurst  
Berenice & Roger  
Haberman  
Dr. Albert M. Pfeffer  
Judith Hurwitz

## Sanford Dunn Merit Scholarship Fund For Study

*In Memory of*  
Richard Levitt  
Daniel Dunn

## Sylvan Siegler Scholarship Fund for Jewish Camping

*In Memory of*  
Elizabeth Bohm  
Morton Hurst  
Merna Siegler

## Vera & Herman Hershman Bar/Bat Mitzvah

*In Honor of*  
Betty Hershman's  
70th Birthday  
Lenny & Elizabeth  
Hershman  
*In Memory of*  
Morton Hurst  
Lenny & Elizabeth  
Hershman

# Happy ♥ Anniversary

September Anniversaries will be celebrated on September 16.

To sponsor a Kiddush contact Jill, 913-647-7286.

Day		Years	Day		Years
1	Milton & Marjorie Adler	60	6	Lewis & Carol Berey	52
1	Steven & Stacy Brown	15	6	Scott & Debra Davis	30
1	Michael & Anne Jacobs	43	6	Michael & Miriam Farber	8
1	Frank Lipsman & Janet Mark	32	6	Abraham & Marlene Kopec	57
1	Jeffrey & Linda Sander	32	6	Jay & Erica Reich	8
1	Richard & Connie Simon	26	7	Daniel & Janna Rosenthal	14
2	Michael & Renana Abrams	27	8	Roman & Svetlana Sorkin	44
2	Neil & Alexis Miller	5	10	David & Amy Hersch	11
2	Eran & Yael Re'em	18	10	Michael & Samyra Marks	50
3	Seth & Robyn Freiden	11	10	Aaron & Jennifer Spiegel	16
3	Phillip & Barbara Hodes	50	11	Elliott & Katharine Hollub	57
3	Kurt & Stephanie Kavanaugh	28	12	Scott & Debra Goldstein	13
3	Larry & Linda Lessner	39	16	Tony & Kelly Shapiro	19
4	Joshua & Leah Langert	6	17	David Gale & Gina Kaiser	28
4	Sam Goller		19	Stan & Mary Weiner	47
	& Roberta Pollack-Goller	6	20	Richard & Lisa Hurst	25
4	Steven & Judith Sherry	57	20	Ronald & Kathy Schikevitz	25
4	Daniel & Sarah Stras	1	21	Simon & Janet Galapo	20
5	Joseph & Alyson Dieker	2	24	Stanley & Barbara Bodker	17
5	Allen & Gail Gutovitz	46	27	Leonard & Elizabeth Hershman	47
6	Gregory & Susan Azorsky	30	27	Max & Julie Soloman	17

*Mazal Tov to...*

**Helen Rae Cerier** on the birth of her great-grandson, Landon Michael Cerier. Parents are Michael & Lauren Cerier. Grandparent is Skip Cerier.

**Alan Edelman & Debbie Sosland-Edelman** on the birth of their Granddaughter. Parents are Ari & Katja Fine.

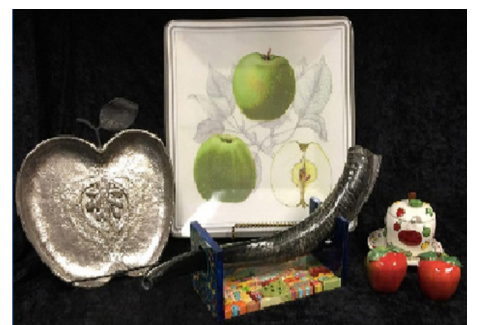
**Jimmy & Sunni Rosenbloom** on the birth of their Granddaughter. Parents are Michael & Neili Glotter.

## Visit the Beth Shalom Sisterhood Gift Shop For All Your Judaica & Non-Judaica Needs

As we prepare for the High Holidays, we want to thank everyone for supporting Beth Shalom Sisterhood Gift Shop, a very important part of Sisterhood's annual income that supports our synagogue and Sisterhood programs, charities, etc.

Please drop by and view all the new items we're bringing in for the holidays, for hostess gifts, and our important Judaica gifts for Shabbat and other Jewish occasions.

Our hours during the school year remain the same, Monday-Thursday, 10:00 am-2:30 pm and Friday, 10:00 am-12:30 pm. Sunday hours are 9:30 am-12:30 pm. If these hours aren't convenient, please call Mary Weiner for an appointment at 913-642-9363 or 913-406-9296.



For Bar/Bat Mitzvah Registries, please call Tina Chapman at 913-345-8773. On September 10, we will have a table set up with merchandise for Sunday School parents to acquaint them with the Gift Shop. We will have a drawing for a \$20 gift certificate. We look forward to seeing you during the coming year.

Congregational-Wide Events - See each department for their activities

Sunday	Monday	Tuesday	Wednesday	Thursday	Friday	Saturday
					<b>1</b>	<b>2</b> Auf Ruf of Brad Jacobs & Rachel Myers 8:28 Candle Lighting 10 Elul Havdalah Shavuah Tov!
<b>3</b> No PRS Classes 12 Elul	<b>4</b> Morning Minyan, 8:00 am at Village Shalom CBS Offices Closed No RFECEC 13 Elul	<b>5</b> 14 Elul	<b>6</b> Warm Up America! PRS Classes for Grades 3-7 Resume 15 Elul	<b>7</b> 2018 Confirmation Class Meeting 7:00 pm - 8:00 pm 16 Elul	<b>8</b> 7:18 Candle Lighting 17 Elul	<b>9</b> Birthday Shabbat Kiddush Corps Shabbat Shabbat Kids' Club Tot Shabbat 8:17 Candle Lighting 18 Elul Havdalah Shavuah Tov!
<b>10</b> First Day of PRS Classes for Grades K-2 & 8-10 Jewish Culture Fest 11:00 am - 7:00 pm at the Jewish Community Center 19 Elul	<b>11</b> CBS Board Meeting 20 Elul	<b>12</b> SH Fall Membership Event 11:00 am - 2:00 pm Banishing Bullying Behavior 9:00 am - 12:00 pm 21 Elul	<b>13</b> 22 Elul	<b>14</b> Back to Preschool Night 6:30 pm - 8:00 pm 23 Elul	<b>15</b> LTI (KCUSY) 7:07 Candle Lighting 24 Elul	<b>16</b> Anniversary Shabbat LTI (KCUSY) Parashat Hashavua 8:06 Candle Lighting 25 Elul Havdalah Shavuah Tov!
<b>17</b> Tiberius Klausner Concerto Competition 3:00 pm - 5:00 pm LTI (KCUSY) 26 Elul	<b>18</b> 27 Elul	<b>19</b> 28 Elul	<b>20</b> No RFECEC Offices Close at Noon No PRS Classes 6:59 Candle Lighting 29 Elul	<b>21</b> For High Holiday Services & Programming, See Page 1 7:58 Candle Lighting 1 Tishrei	<b>22</b> For High Holiday Services & Programming, See Page 1 6:56 Candle Lighting 2 Tishrei	<b>23</b> For Shabbat Services, See Page 1 *Please Note: All Services will be held at the Jewish Community Campus* 7:54 Candle Lighting 3 Tishrei Havdalah Shavuah Tov!
<b>24</b> PRS Classes Resume Mt. Carmel Memorial Service 1:00 pm at the Yukon Chapel 4 Tishrei	<b>25</b> 5 Tishrei	<b>26</b> 6 Tishrei	<b>27</b> 7 Tishrei	<b>28</b> Erev Yom Kippur Offices Close at Noon For High Holiday Services & Programming, See Page 1 6:45 Candle Lighting 9 Tishrei	<b>29</b> Yom Kippur For High Holiday Services & Programming, See Page 1 *Please Note: All Services will be held at the Jewish Community Campus* 7:43 Candle Lighting 10 Tishrei Havdalah Shavuah Tov!	<b>30</b>

## Candle Lighting Blessing

ברוך אתה ה' אלקינו מלך העולם אשר קדשנו במצותיו וצונו להדליק נר של שבת.

Barukh ata Adonai Eloheinu melekh ha'olam, asher kideshanu b'mitzvotav vetzivanu lehadlik ner shel Shabbat.

## September Service Schedule Shabbat CBS

### Weekdays

Minchah:

**Sunday-Thursday**

**6 pm**

Shacharit:

**Monday-Friday**

**7 am**

Kabbalat Shabbat:

Main Service:

Library Minyan:

Minchah:

Minchah:

Minchah:

Minchah:

Minchah:

Shacharit:

**Friday**

**Saturday**

**Saturday**

**September 2**

**September 9**

**September 16**

**September 23**

**September 30**

**Sunday**

**6:00 pm**

**9:30 am**

**9:30 am**

**7:29 pm**

**7:18 pm**

**7:07 pm**

**6:56 pm**

**6:45 pm**

**8:00 am**



Shabbat Services and Sunday morning Shacharit will be held at CBS, 14200 Lamar.

Weekday Minyan will be held at Appleman Synagogue, Village Shalom, 5500 W. 123rd St.

\*Please Note: On Tuesday, Wednesday and Fridays, Ohev Sholom will join us for the Morning Minyan.





## Congregation Beth Shalom

14200 Lamar • Overland Park, KS 66223

[www.bethshalomkc.org](http://www.bethshalomkc.org)

Office: 913-647-7279 • Fax: 913-647-7277

### CONGREGATION Beth Shalom

David M. Glickman, *Senior Rabbi*

Hazzan Tahl Ben-Yehuda,

*Director of Congregational Learning*

Bernie Fried, *Executive Director*

Alan L. Cohen, *Rabbi Emeritus*

Judy Jacks Berman, *Director, RFEC*

Richard Simon, *President*

Dahlia Berger, *Scroll Design*

The Congregation Beth Shalom Scroll (USPS531-420) is published monthly by Congregation Beth Shalom, 14200 Lamar Ave., Overland Park, KS 66223. Annual Subscription \$24.00. Periodical Postage Paid in Kansas City, MO.  
**DATED MATERIAL**

**POSTMASTER:** Send address changes to CONGREGATION BETH SHALOM SCROLL, 14200 Lamar, Overland Park, KS 66223. Scroll Deadline: The 1st of the previous month. Submit articles to the Administrative office before the deadline.

*Congregation Beth Shalom, an egalitarian Conservative synagogue, is a welcoming community of individuals from diverse backgrounds, strengthening connections with God, Torah and the Jewish people through communal commitment to prayer, study and acts of loving kindness.*

#### Coming Attractions:

Scroll Deadline:  
September 6 for October

No PRS Classes  
October 1, 4, 11

Erev Sukkot, Offices Close at Noon  
October 4

Offices Closed for Sukkot  
October 5 & 6

Offices Close at Noon  
October 11

Offices Closed for Shemini Atzeret  
& Simchat Torah  
October 12 & 13

#### Office Hours:

Monday - Thursday  
8:30 am - 5 pm  
Friday 8:30 am - 3 pm  
Closed on Federal Holidays

#### Mt. Carmel Cemetery Hours:

Monday, Wednesday 8 am - 4:30 pm  
Tuesday, Thursday Closed  
Saturday Closed  
Friday & Sunday 8 am - 4 pm  
National Holidays 9 am - 4 pm  
*Exceptions: Thanksgiving,  
Christmas Day, New Year's Day & Easter*  
Jewish Holidays Closed  
Phone: 816-398-9290

#### Sisterhood Gift Shop Hours:

**Regular Hours**  
Monday - Thursday, 10 am - 2:30 pm  
Friday, 10 am - 12:30 pm  
Sunday, 9:30 am - 12:30 pm  
During Business Hours, 913-647-7298  
**Other Hours by Appointment Only,**  
Call Mary Weiner at  
913-642-9363 or 913-406-96  
For B'nei Mitzvah Registries call  
Tina Chapman at 913-345-8773

## Parashat HaShavua

Parashat HaShavua is an ongoing, monthly program taking place every third Shabbat of the month at 9:00 am in the conference room. The goal of this program is to engage its participants in a stimulating discussion of the weekly torah portion in a friendly

atmosphere, where the difference of opinions is respected and questions are encouraged.

The next session will take place on September 16, when Parashat *Nitzavim-Vayeilech* will be discussed. An informal atmosphere and deep level

of discussion are the trademarks of this gathering. No prior experience is required, and everybody is welcome to join.

For more information, contact Svetlana Sorkin at 913-393-1715 or [saraliorasedu@hotmail.com](mailto:saraliorasedu@hotmail.com).