



CONGREGATION  
BethShalom

# The Scroll



Light  
the  
Menorah

Sunday,  
December 2

Don't forget to light  
your first candle on  
December 2 to start  
the celebration of  
Hanukkah

## SAVE THE DATE – DECEMBER 8

On Shabbat morning December 8, we will be honoring  
Jill Goldstein for her 32 years of outstanding service to Congregation Beth Shalom.  
Please join us for the Shabbat service and the special kiddush which follows.  
Let's all let Jill know how much we love her and will miss her.





## It all Starts with Gratitude

Contained within the Talmud (Avodah Zarah 8a) is an ancient narrative about the first Man and his first winter. The legend describes the first man terrorized by the impending darkness of winter as the solstice approached. As he saw the darkness approaching, he said, "Woe is me," and anticipated his prophesized doom. He spent those eight days in fasting and prayer.

And then the solstice came. The most darkness of the entire year. Following the solstice, the days became increasingly longer, and the light began to increase in the world. Adam then created an eight-day festival as the days began to lengthen to worship God.

Absorbing the import of this narrative places the origins of Hanukkah not in the battle of the Maccabees, not in the miracle of the cruse of oil, not in the human spirit defying the anti-Jewish decrees of Antiochus - but in the primeval waxing and waning of darkness and light. From this narrative, we see the human tendency to be afraid of the dark and to celebrate the light. We see the need to create celebrations as a uniquely human characteristic that dates to the first human.

There is a fundamental difference between the story of Adam and the story of Hanukkah. In the eight-day festival that Adam creates, he is simply a witness and not an actor. It is his first time noticing the natural ebb and flow of darkness and light - but he does nothing.

What Hanukkah celebrates is human agency. One of the great powers that human beings have is the power to bring light to dark places. In Proverbs we read: Ner Mitzvah v'Torah or "Mitzvah is the lamp, and Torah is the light." (Proverbs 6:23). God's giving the Torah to humanity and the ability to do mitzvot, is God saying to us: you are not completely powerless over darkness in the world. Though the days get shorter in the winter - we can light candles.

Similarly, when there is the darkness of evil in our world, we are not completely powerless. We can provide light - and ignite sparks in others. The beauty of lighting one candle with another candle is that the first candle's light is not diminished at all. The same is true with igniting the soul of another. Inspiring another to bring light to the world diminishes our own light not at all.

May your family's Hanukkah be filled with light.

*David M. Glickman*

RABBI DAVID M. GLICKMAN  
[dglickman@bethshalomkc.org](mailto:dglickman@bethshalomkc.org)

## PRS field trip to Shabbat

by HAZZAN TAHL BEN-YEHUDA  
[hazzantby@bethshalomkc.org](mailto:hazzantby@bethshalomkc.org)

Judaism is really quite old, and the reason it has lasted so long is that it's not just something we study until we have mastered it. Of equal or greater importance than study, Judaism is an experience that we share. It is the coming together of children and parents, of families and friends to celebrate, to support each other through grief, to pray and play together, and especially to eat together. It must be lived in order to truly become part of us.

*At the Polsky Religious School*, we strive to balance the demands of secular life with learning the history, culture, customs and practices of over two thousand years of Jewish history. We grapple with honoring our commitment to Jewish education while also understanding commitment to sports and extracurricular activities and family engagements.

More and more, Religious schools across the country meet the needs of their students and families in creative new ways, and Tiylul l'Shabbat is one answer. Tiylul l'Shabbat (field trip to Shabbat) is when all the PRS students and teachers come to shul to learn and pray and celebrate Shabbat together, replacing Sunday religious school that week.

## Polsky Religious School

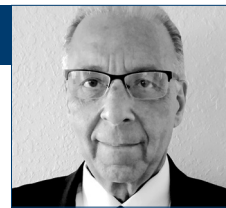


Last year we introduced Tiylul l'Shabbat, an opportunity to participate in the communal experience of Shabbat. This year, Tiylul l'Shabbat will be December 8 and January 26. While we will not be using the PRS iPads, paper and pencils or whiteboards, the learning will be just as impactful as the learning on Sundays. Students will participate in services in Goldsmith Hall as well as in grade-based activities separate from services. At the end of services, the students of the Polsky Religious School will lead the congregation in a communal musical celebration of Hanukkah.

Our synagogue's doors are wide enough for all, and more and more, our sanctuary and hallways and classrooms are filled on Shabbat mornings with learning, with prayer, with meaningful connections and, of course, with good food. I look forward to sharing all of the ways Congregation Beth Shalom supports and encourages us to connect.

Hope to see you soon!





## Life Lesson 15: Paralysis by Analysis

My favorite author Anonymous wrote, *"Good decisions come from experience, and experience comes from bad decisions."* But the worst decision is not to make one.

How often do we avoid making choices because we await that one elusive piece of information, the one piece of information that will answer all our questions. Friends, that piece of information is not here now, and may never come.

No matter how much information we have, no matter how long we take to analyze the available information, we will never have perfect information. There will always be a degree of uncertainty in anything we do. Any decision we make is the right one at the time we make it. It may turn out to be a very bad decision based on what occurs in the future, but at that moment in time when we pondered all the options, we can be secure in the fact that we made the right call.

We are all experts at playing the "what if" game. Many of us are fearful of what might occur if we make the wrong choice. However, we must learn that there is no wrong choice; there is only the best choice at that moment in time. As former first lady Michelle Obama said, "You can't make decisions based on fear and the possibility of what might happen."

We can only base our decisions on the currently available information, the knowledge and experience we possess, and what we feel would be best for us and the people most impacted by our choices.

**Stagnation is not an option, at least not a very productive one.**

We may lose something dear because of a bad decision, but we lose far more by failing to make one. Hockey great Wayne Gretzky said, "We miss 100% of the shots we don't take." Don't be afraid to be wrong; don't be afraid to take the next step. We can only learn from our mistakes. We must believe that most times, the decisions we make will turn out to be right ones.

Do not make a decision you know is wrong because you fear people will be upset with you. United States Senator Kamala Harris put it best when she said, "I'll be judged on the body of work and not the popularity of any one decision."

You can analyze a situation until Noah builds another ark, but it won't change the facts. Don't let the fear of making a decision paralyze your thought process. Be confident, be positive, make that decision, and move forward.

In the words of that great Torah scholar Maimonides, "The risk of a wrong decision is preferable to the terror of indecision."

**BERNIE FRIED**  
EXECUTIVE DIRECTOR  
[bfried@bethshalomkc.org](mailto:bfried@bethshalomkc.org)

## Rose Family Early Childhood Education Center

### Miss Judy's Guide to a Meaningful Hanukkah

by JUDY JACKS BERMAN | DIRECTOR  
[jjb@bethshalomkc.org](mailto:jjb@bethshalomkc.org) | 913-647-7287

Hanukkah is a favorite holiday for Jewish children. Finding a balance of gift giving while teaching your kids and grandkids kindness and thoughtfulness of others, as well as gratitude for what we are blessed with is every parent's/grandparent's challenge. Eating latkes and playing dreidel can be a part of each night's celebration. Here are some suggestions for a meaningful Hanukkah.

**Night 1:** Make the first night of Hanukkah the great gift night. Give your child their gifts from you and other family members.

For the next 7 nights, teach your child how to be grateful for what they have. Teach them to be thoughtful for those who are less fortunate.

**Night 2:** Sit down with your child and count all the tzedakah they have collected over the year. If you have not collected tzedakah all year, everyone can give a portion of their piggy banks to a charity of one's choice. Divide your tzedakah into piles for each agency you want to give to. Some examples include Safehome, Harvesters, Ronald McDonald House, Toys for Tots, etc.

**Night 3:** Family movie night - get into cozy pajamas, serve snacks and watch a family friendly movie.

**Night 4:** Bake cookies or decorate cupcakes for a soup kitchen or bring them to the fire or police department. Make peanut butter and jelly sandwiches for the homeless. You may want to call some of the shelters in advance to see what they can use.

**Night 5:** Go through your child's closet with them and find gently worn clothes they have outgrown as well as gently used toys and donate them to Operation Breakthrough, Safe Home or Synergy Services.

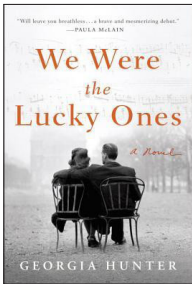
**Night 6:** Let your child make the dinner tonight and clean up the best they can!

**Night 7:** Hanukkah is early this year. Call JFS, Synergy Services or Safe Home and adopt a family for the holidays. They have lists of ages of kids and needs of the family. On the 7th night of Hanukkah have your child help assemble the gifts and wrap them for the adopted family.

**Night 8:** Family experience night - do something as a family. Examples include a night out bowling, go out for dessert, go to the Arboretum for the Luminary walk, etc.







### *We Were the Lucky Ones* by Georgia Hunter

Sisterhood Book Club will meet on Wednesday, December 12 at 1:30 pm at the JCC in the large boardroom on the first floor. The club will discuss *We Were the Lucky Ones* by Georgia Hunter.

For more details or to attend, contact Linda Lessner at 913-897-0122 or at [llessner@kc.rr.com](mailto:llessner@kc.rr.com).

## Mt. Carmel Volunteer Day







# GIFT SHOP HANUKKAH SALE

Come on in and shop.

*Hanukkah Items*  
*20% off*

NOVEMBER 4 - DECEMBER 10

For questions contact:  
Mary Weiner  
913-642-9363 (home)  
913-406-9296 (cell)

(excludes mezuzah parchments, Shabbat candles, talit, standard Hanukkah candles and printed to order t-shirts and sweatshirts).



### PAST, PRESENT AND FUTURE

by HAROLD KASEFF

**Our past** for those who attended our instrumental service (or Tefillateinu) at Beth Shalom on Saturday, November 3, I truly hope this represented a very positive effort on behalf of the Congregation Leadership to re-introduce instrumental services over the course of the year. While our previously planned musical service coincided with the #ShowUpForShabbat programs held by Jewish communities throughout the country, this collaborative effort followed the Kansas City Community Vigil held at KI Synagogue and it helped us all heal because of the mass killings at the Tree of Life Congregation in Pittsburgh, PA. For me personally, it was remarkable to witness the people attending from all walks of life, Muslim and Christian alike to help us in our time of grief for the families in Pittsburgh.

**Our present** is represented by recent programs at Beth Shalom including our summer social, a movie presentation based on the movie *Defiance* about whom much of the movie theme was based during the Holocaust, and our first “Shabbat Around the World” centered around delicacies of Morocco.

**Our future** is gauging your interest in new programming and hopes of encouraging your participation and attendance in any future programming. Already planned are at least three more instrumental services (January 2019, March 2019 and May 2019) along with additional programs about mental health in our Jewish community, the opioid epidemic, three more “Shabbat Around the World” dinner Shabbatot, and a musical program planned in the spring to experience history of Israel through song.

We seek your help in coordinating new programs that congregants want to see, participate, learn, and be involved with our shul, in hopes of growing our community involvement within our Congregation Beth Shalom family.

**We encourage your input by contacting any of the board members or synagogue office.**

### Bar and Bat Mitzvah Announcement

Listed below are those Beth Shalom children who were born in 2009 and will celebrate their Bar or Bat Mitzvah in 2022.

We ask that you check the list carefully to be sure that your child(ren) are listed. If you have any corrections or additions to this list, please notify Jill Goldstein, B’nei Mitzvah Coordinator, at 913-647-7286. Further information on setting your child’s date will be sent out in January.



Evan Albee  
Jackson Cowman  
Evan Dworsky  
Dylan Freiden  
Daniel Galler  
Eitan Gerson  
Daniela Glickman  
Leslie Hankin  
Chloe Hersch  
Saphire Hobbs  
Mark Kricsfeld  
Gabriel Sherry  
Joshua Snitz  
Avi Spiegel  
Will Widman





# Of Blessed Memory

We express condolences to our Beth Shalom Members, their Families and Friends.

Robert B. Jacobs, z"l NOVEMBER 2 - 24 CHESHVAN Karen Noble Hanson, z"l NOVEMBER 7 - 29 CHESHVAN

PLAQUES HAVE BEEN DEDICATED In Memory Of...

*Yahrtzeits* Join us for morning or evening minyan to say Kaddish for your loved one. See service schedule, page 11.

## DEC 1 - 23 KISLEV

Doris M. Baraban  
Clara Cohn  
Raymond Fein  
Eva R. Levey  
Esther Levin  
Meyer Lofman  
Morris Mandelbaum  
William J. Rosenthal  
Jake Schneider  
Jacob Schoen  
Mendel Small

## DEC 2 - 24 KISLEV

Rosalie A. Alpert  
David E. Ellis  
Anna Epstein  
Kasiel Galler  
Marilyn Graubart  
Seth P. Jaben  
Gertrude G. Magazine  
Rose Minkin  
Philip Moskovitz  
David Rittmaster  
Irving E. Searles  
Carrie Silverman

## DEC 3 - 25 KISLEV

Sarah E. Bernstein  
Sarah Fredman  
Sarah Gersh  
Rose Halperin  
Deborah Jacobson  
Morris Kivovitch  
Yetta H. Manne  
Ernest E. Peiser  
Fannie Polsky  
Ruth Rose  
Max J. Rotman  
Nathan Silverforb  
Joseph Steinberg  
Mary Wolf  
Hattie Wolff

## DEC 4 - 26 KISLEV

Max D. Cohen  
Sedelle Glass  
Fischel Greenbaum  
Eugene Kopitnik  
Sol Kupperstein  
Mendel Mendelsohn  
Jerome H. Naron  
Samuel Rosenstein  
Bertha Untrif  
Julius Wishna

## DEC 5 - 27 KISLEV

Samuel D. Aaronson  
Sam Bell  
Toba Corwin  
Sarah T. Davis  
Louis Feinberg  
Louis Feld  
Hyman Gordon

Jacob Koppel  
Isadore Rich  
Israel D. Rubin  
Minna Seelig  
Hyman Shlensky  
Harold Unger  
Brett Weiner

## DEC 6 - 28 KISLEV

Rose L. Bayzman  
Leebert Glass  
Minnie R. Hipsh  
Frances Karpin  
Gittel Kushner  
Mark Lindy  
Jacob Maizenberg  
Lillian Weiner

## DEC 7 - 29 KISLEV

Simon Fox  
Frank Greenbaum  
Aaron Hyman  
Mollie Kern  
Dora Kulvin  
Isadore Penner  
Barbara Shapiro  
Sam I. Temsen

## DEC 8 - 30 KISLEV

Marvin Azorsky  
Marvin D. Bordy  
George M. Bush  
Morton L. Cohn  
Harry Donovanitz  
Ida Gumowitz  
Sophie Kelner  
Mary Krashin  
Joseph Kurtz  
Harry Rosenstein  
Sarah Shlensky  
Leonard Shopmaker  
Leon Silverman  
Anna Swartz  
Joseph Woskow

## DEC 9 - 1 TEVET

Louis Durbin  
Henry Goldblatt  
Louis Kahn  
Arthur S. Katz  
Herschel D. Kaufman  
Abraham Kitrick  
Lena Kleinstein  
Sol Levine  
Herman Maling  
Max L. Mendell  
Mildred Michelson  
Ruby Shanberg

## DEC 10 - 2 TEVET

Sophia Barr  
Robert Benjamin  
Berry Dantzig  
Rose Fried  
Birdie Itrater  
Sadie Kanter  
Henry Markowitz

Rebecca Pack  
Pearl Pfefer  
Abe Rabinowitz  
Isadore Rosenberg  
Albert Satz  
Abraham Seiffer  
Bessie Seigel  
Fred Waldner  
Rose Yarmo

## DEC 11 - 3 TEVET

Leah Boresow  
Meyer Cohen  
David Denebeim  
Minnie Epstein  
Edith Glaser  
Jeannette Herowitz  
Harry Hipsh  
Jacob Karol  
Edna Kort  
Charles A. Lasky  
Louis Rose  
Sophie Taylor  
Olga Wertheim

## DEC 12 - 4 TEVET

Anne Bender  
Abe Blond  
Doris Edelman  
Nathan E. Funk  
Harry Gorman  
Joe Levine  
Chaim Litwin  
Wolf Peltzman  
Ruth Planzer  
Oscar S. Schaffer  
Shale Waldman

## DEC 13 - 5 TEVET

Helen Cohen  
Jennie Denebeim  
Max S. Goodman  
Gershon Hadas  
Harry A. Kanter  
Harvey A. Klein  
Della Lerner  
Annie Levine  
Jacob Lewin  
Adele S. Lipoff  
Ida Loeffler  
Morris Porin

## DEC 14 - 6 TEVET

Judy L. Barash  
Lena Bernstein  
Solomon Bornick  
Rebecca Friedman  
Lillian Katz  
Meyer Kornblum  
Roy Kort  
Peggy Krigel  
Joseph Peltzman  
Simon D. Shankman  
Lena Silverman  
Esther Silverstein  
Hinda Waldman  
Hanan Wedlan

## DEC 15 - 7 TEVET

Rebecca Greenblat  
Flo Harris  
Jennie Hoffman  
Dora Levi  
Fannea Lewis  
Israel M. Linsitz  
Sam F. Miller  
Louis Peltzman  
Hyman Rappaport  
Rose C. Silverberg  
Sara Weinberg

## DEC 16 - 8 TEVET

Lena Baranor  
Charmaine Fredman  
Clarence Gershon  
Lily A. Ginsberg  
Ben Jacobson  
Hyman Junsberg  
Ruth Lerner  
Minnie Levine  
Ruth Litvin  
Edna Milens  
Morris Rich  
Joe H. Rutlader

## DEC 17 - 9 TEVET

Mary B. Adelman  
Marjory Bergson  
Helen Cohen  
Rosa Dollman  
Betty J. Ginsberg  
Louis Goldfinger  
Bessie Greenberg  
Paul Hoffman  
Joseph Horovitz  
Lester Kahn  
Jere Kaufman  
Sarah Levin  
Helene E. Present  
Esther Salvay  
Chana Sander  
Ida K. Shure  
Louis Walter

## DEC 18 - 10 TEVET

Morris A. Cohen  
Simon Ginsburg  
Fannie Goodman  
William H. Greenberg  
Gazella Gulinson  
Eddie Jacobs  
Anna Klein  
Theodore Mack  
Rachel M. Mesuse  
Max Pollock  
Sam R. Price  
Edith Quito  
Anna Rubin  
Ben Stocker  
Leah K. Weber

## DEC 19 - 11 TEVET

Meyer Eichenberg  
Louis Ellis  
Fanny Feingold  
Hannah Funk  
Louis Horovitz  
Jack E. Jacobsen  
Bessie P. Kars  
Nathan Katz  
Samuel Katzman  
Pauline B. Klein  
Celia Lieberman  
Sam Nelkin  
Ida Statland  
Mordecai Taxman

## DEC 20 - 12 TEVET

Alvin Capito  
Etta Kur  
Henny Meyerhoff  
Rose Ribakoff  
Bella A. Sarno

## DEC 21 - 13 TEVET

Nathan Block  
Isaac Chocron  
Sidney Feinberg  
Lillian Fox  
Arthur Funk  
Max Gordon  
Harry Jacobs  
Goldie Koden  
Isreal Kosovitz  
Dorothy F. Levy  
Abe Rogell  
Rose Singer  
Sally N. Stolzoff  
Minnie G. Zalusky

## DEC 22 - 14 TEVET

Louis Barash  
William Copaken  
Elimelech Gordon  
Harry A. Horovitz  
Zissel Kamar  
Jules E. Kohn  
Fanny Krasne  
Irving Malashock  
Kate Meltzer  
Harold Riss  
Joseph S. Rittmaster  
Cyd Sandelman  
Morris Schneider  
Sophia Walter  
Isaac Zale

## DEC 23 - 15 TEVET

Sophia G. Adelman  
Jacob Bernstein  
Blanche Bloch  
Louis Bronstein  
Bessie Cohen  
Simon Dubinsky  
Jeanette F. Gidinsky  
Mary Greenstein  
Clara Gumowitz  
Joseph Gutovitz

Sam Hipsh  
Frank Katz  
Max Klein  
Abraham LaBow  
Sarah Lesky  
Frances Levitch  
Samuel Lichtor  
Sol Morris  
Michael Rafiel  
Bessie Rubenstein  
Fannie P. Schick

## DEC 24 - 16 TEVET

Marvin J. Copeland  
Herman L. Fabian  
Rahle Gelhaar  
Ike Grossman  
Edward J. Kanter  
Elsa GLevin  
Harry Levin  
Rose S. Levine  
Minnie Levy  
Jacob Pfeffer  
Israel Schlozman  
Barney Stevens

## DEC 25 - 17 TEVET

Charles Berger  
Lena Bergman  
Rhonda DeLong  
David S. Dolginow  
Milton Franks  
Ely Freed  
Rose Geller  
Ada Gershon  
Betty Helfand  
Rose Hershon  
Emanuel Joffee  
Samuel S. LaPort  
Harry Levine  
Marie Millstein  
Harold Nicholas  
Selma Reingenheim  
Harry Yukon

## DEC 26 - 18 TEVET

Micah T. Bratt  
Harry Byers  
Anna Feld  
Nathan Haith  
Seena H. Kaufman  
Charlotte Kline  
Mamie H. Krigel  
Bessie Rogozenski  
Barney Stone

## DEC 27 - 19 TEVET

Harry Baier  
Frances Berger  
Freda F. Block  
Jacob Cohen  
Florence Denebeim  
Sidney I. Glaser  
Melvin N. Greenberg  
Simon Kulvin  
Frank Levin  
Steve S. Pack  
Morris Rogozenski

Michael Rosenbloom  
Lena S. Smith  
David Spellman

## DEC 28 - 20 TEVET

Albert K. Ball  
Hayman Barewin  
Sam Baum  
Morris Brown  
Boris Galitzky  
Sarah Ginsberg  
Harry Gitterman  
Dorothy Gottlieb  
Livie L. Halperin  
Seymour D. Traxler  
Morris Wolfson

## DEC 29 - 21 TEVET

Harriet Azorsky  
Baila K. Baellow  
Kelman L. Bovos  
Arvie Goldstein  
Henry Hakan  
Daniel M. Hollub  
Earl Katz  
Isadore Marks  
Esther Morris  
Shirley Moskovitz  
Benjamin Portman  
Betty L. Shenker

## DEC 30 - 22 TEVET

Paul Bayzman  
Max Benjamin  
Gustav Einhorn  
Jacob Grinpas  
Arthur Harris  
Sherry Kaplan  
Isadore D. Levine  
Mildred Lipsey  
Badannah Silverman  
Sidney Simon  
Sarah Smith  
Rita J. Tilzer  
Bessie Turock

## DEC 31 - 23 TEVET

Martin Brenner  
Morris H. Dunn  
Bertha Dworkowitz  
Bessie Ellis  
Helen Feingold  
Anna Grossman  
Thelma House  
Rose H. Jacobson  
Daniel Markel  
Solomon Rubinfire  
Rachel E. Schere  
Irving Schoenwald  
Rebecca Schreiber  
Mollie Schwartz



## Kinnus

by STEFANIE WILLIAMS | YOUTH DIRECTOR/PROGRAMMING

[swilliams@bethshalomkc.org](mailto:swilliams@bethshalomkc.org) | 913-647-7292

Kinnus is the EMTZA Region USY convention which takes place over Thanksgiving Weekend each year. As you may imagine, there are tons of questions and complaints – how can we possibly hold a convention on this holiday? Yet, each year, I am in awe at the level of programming and leadership that occur on this weekend. After each service, study session, and social program throughout the convention, I walked away being so impressed by our youth – our future leaders. The intense conversations, the desire to do more for and with their communities, the kavanah during davening, the beautiful ruach and singing during slowach, truly inspiring!! Feel free to ask any of our KCUSYers about their experience! They're always happy to share!





Contributions through November 9 are listed below. Thank you for thinking of us.

## BENJAMIN RYWECK TORAH FUND

### *In Memory of*

Benjamin Ryweck  
Joan March

## BETH SHALOM CHESED COMMITTEE FUND

### *In Memory of*

Paul Shapiro  
Sheldon & Jackie Fleschman

## BETH SHALOM GENERAL FUND

### *In Appreciation of*

Carol Berey's Speedy Recovery  
Linda Smuckler

### *In Honor of*

the Birth of Zelda Brand Looper  
Judith Henry  
Jeff & Rhonda Fromm's 30th Anniversary  
Shelton & Nancy Gallas 56th Anniversary  
Eric & Amy Schultz  
Rod Minkin's Speedy Recovery  
Judith Bell

Leah Sherry's Bat Mitzvah

Steve & Judy Sherry

Lloyd Stahl's 2nd Bar Mitzvah

Larry & Ellen Polsky

### *In Memory of*

Paul "Yehuda Pesach" Alpersen  
Margie "Malka" Alpersen  
David & Carol Porter

Joel Bock

David & Lynne Bock

Isadore Bressel

Jerold Bressel

Bess Byers

Ronald Greenberg

Elaine Choikhit

Steve Choikhit

Max Dubin

Sol & Nora Dubin

Harry Eisman

Hope & Marshall Talbot

Rose Fried

Bobbie Bograd

Melvin Frischer

Shirley Frischer

Mike Jacob's Father

Herb & Idie Parmet

Nathan Jagoda

Steven Jagoda

Miriam Krantz

Judith Bell

Carl Rosenberg

Todd & Shirley Stettner

Phil & Lillian Small

Maynard Small

Stacey Aviva Solomon

Charles & Esther Megerman

Marilyn Cohen

Max & Charlene Muller

Mary Patricia Sylvia

Neil & Blanche Sosland

Anna Webber

Joseph Lesser

## BEVERLY & HARVEY BODKER ENDOWMENT FUND

### *In Memory of*

Beverly R. Bodker  
Fred & Cindy Bodker  
Harvey Bodker  
Sadie Klein  
Fred & Cindy Bodker  
Rabbi Morris Margolies  
Harvey Bodker

## CEMETERY MAINTENANCE FUND

### *In Memory of*

Walter Eichenwald  
Howard Eichenwald  
Judith Mark  
Susan Zale  
Isaac Zale  
Susan Zale

## FLORENCE & MEYER KAPLAN SUKKOT FESTIVAL FUND

### *In Memory of*

Florence Kaplan  
Max & Charlene Muller

## FREIDEN FAMILY FUND

### *In Honor of*

Lloyd Stahl's Bar Mitzvah  
Floyd & Bari Freiden

## GALE & MAXINE GROSSMAN RELIGIOUS SCHOOL

### *In Memory of*

Louis Grossman  
Maxine Grossman

## HARRY PURITZ SCHOLARSHIP FUND

### *In Memory of*

Harry Puritz  
Carl Puritz

## HAZZAN BEN-YEHUDA'S DISCRETIONARY FUND

### *In Appreciation of*

Hazzan Tahl Ben-Yehuda  
Steve & Ilene Simon  
Bruce & Celia Solomon  
Matt Solomon

### *In Memory of*

Miriam Schwartz  
Dan & Joanne Schwartz

## JACOB H. & ROSE LEVINE TEACHER DEVELOPMENT FUND

### *In Memory of*

Bettye Rose Steinhaus  
Art & Linda Levine

## JUDAICA & ART FUND

### *In Honor of*

Rickie Haith's 80th Birthday  
Bob & Aletha Simon

## KIDDUSH FUND

### *In Honor of*

Art Berger's Speedy Recovery  
Harold Kaseff & Rhea Salasche

### *In Memory of*

Sol Baum  
Harold Kaseff & Rhea Salasche

## MARCIA EVELOFF LECHEM FUND

### *In Honor of*

Jason & Andrea Krakow's 25th Wedding Anniversary  
Gary & Patti Friedman

### *In Memory of*

Miriam Krantz  
Friends of the Krantz Family  
Ben Lerner  
Alan & Tina Chapman

## MARCUS BRAND SCHOLARSHIP FUND

### *In Memory of*

Simon Ozar  
Milton & Marilyn Ozar

## MORRIS & ROSE WEINBERG ENDOWMENT FUND FOR CAMP SHABBAT

### *In Memory of*

Dina Scokin  
Steve Weinberg & Family

## PRAYER BOOK FUND

### *In Memory of*

Anne Temple  
Harriet Fein

## RABBI GLICKMAN'S DISCRETIONARY FUND

### *In Appreciation of*

Rabbi David Glickman  
Peter & Bev Newman  
Steve & Ilene Simon  
Bruce & Celia Solomon  
Matt Solomon

### *In Memory of*

William Carr  
Betty Grund  
Shirley Passman  
Stacey Aviva Solomon  
Henry & Clarice Epstein  
Ethel Tabolsky  
Lea Bell

## ROSE FAMILY EARLY CHILDHOOD EDUCATION CENTER

### *In Honor of*

Caroline Cohn  
The Berenboms & Coppakens

### *In Memory of*

Ben Edelbaum  
Estelle Edelbaum

## ROSE S. LEVINE & DORIS L. FLAM ARTS & EDUCATION FUND

### *In Honor of*

Gita Azorsky's Speedy Recovery  
Rickie Haith's 80th Birthday  
Judith Bell

### *In Memory of*

May Shapiro  
Tibor & Carla Klausner

## SAM & ESTHER DANIELS PRAYER BOOK FUND

### *In Memory of*

Rose Fried  
Donald & Ruthann Zurovsky



## SAVE THE DATE!

*Congregation Beth Shalom  
Annual Fundraiser  
2nd Annual Breaking Bread Event  
Sunday Evening, March 31, 2019 Goldsmith Hall*

Michael Smith, Kansas City's acclaimed chef and owner of Michael Smith Restaurant, Extra Virgin and his new concept Farina by Michael Smith, will impress us with a beautiful dining experience. The American-born French-trained chef has delighted our city with his culinary genius since 1994. He has earned several James Beard awards, including Best Chef in the Midwest. His recipes have been featured in numerous publications including Gourmet, Bon Appetit and Wine Spectator.

Michael Smith will delight our palates at The Second Annual Breaking Bread Event-Aviv!-celebrating the change of seasons with a spring-inspired Mediterranean feast. Mark your calendars now for this enjoyable evening.

*December Anniversaries will be celebrated on December 15.*

*To sponsor a Kiddush contact Trinity, 913-647-7281.*

DAY	YEARS	DAY	YEARS
1	Saul & Irene Ellis . . . . . 55	27	Ken & Sheila Sonnenschein . . . . . 31
4	Bernie & Helene Fried . . . . . 41	28	Paul & Gretchen Darling . . . . . 24
5	Stewart & Linda Langer . . . . . 31	29	Bradley & Linda Finkle . . . . . 45
13	Eric & Amy Schultz . . . . . 20	29	Theodore & Linda Goldstein . . . . . 50
18	Ernie & Susan Rosenthal . . . . . 52	30	Howard & Dion Lutzk . . . . . 34
19	Louis & Marilyn Kessler . . . . . 36	30	Jerry & Sharon Lindenbaum . . . . . 40
21	Robert & Beth Klein . . . . . 43	30	Mark Fishman & Linda Gibian . . . . . 45
23	Steven & Jeannette Karbank . . . . . 32	31	Norman Kahn, Jr. & Diana Winyard 44
26	David & Karen Berger . . . . . 36		

## *Mazel Tov*

Steven and Marcia Schorr on the Bar Mitzvah of their grandson, Simeon Ryan Pernick in Seattle, WA.

## *Tot Shabbat*

Tot Shabbat will meet at 11am on December 8 in Rooms 111 - 112. Join us for a fun-filled Shabbat with songs, prayers, and a story. We will have a "Totinental" Breakfast before services and a special kiddush in Goldsmith Hall after.

This program is partially underwritten by the Eugene and Shirley Novorr Tots for Torah Fund. If you want to help sponsor a future Tot Shabbat, please contact Leah Langert at [ljf514@gmail.com](mailto:ljf514@gmail.com).





Congregation Events – See each department for its activities.

RFECEC = Rose Family Early Childhood Education Center  
PRS = Polsky Religious School

1 23 Kislev	SATURDAY Morning Service ..... 9:30 AM Minchah/Ma'ariv/Havdalah ..... 4:49 PM PJ Havdalah ..... 5:30 PM <b>5:49 PM Havdalah Shavua Tov!</b>	12 4 Tevet	WEDNESDAY Talmud Jam South ..... 12:00 PM PRS in Session	24 16 Tevet	MONDAY No RFEC Offices close at 12pm
2 24 Kislev	SUNDAY Hanukkah PRS in Session	13 5 Tevet	THURSDAY	25 17 Tevet	TUESDAY No RFEC All offices closed
3 25 Kislev	MONDAY Hanukkah	14 6 Tevet	FRIDAY	26 18 Tevet	WEDNESDAY No RFEC No PRS
4 26 Kislev	TUESDAY Hanukkah	15 7 Tevet	SATURDAY Parashat Hashavua ..... 9:00 AM Morning Service ..... 9:30 AM Anniversary Shabbat ..... 9:30 AM Minchah/Ma'ariv/Havdalah ..... 4:39 PM <b>5:39 PM Havdalah Shavua Tov!</b>	27 19 Tevet	THURSDAY No RFEC
5 27 Kislev	WEDNESDAY Hanukkah #PopUpRabbi ..... 7:30 AM Warm Up America ..... 10:00 AM Talmud Jam Downtown ..... 12:00 PM PRS in Session	16 8 Tevet	SUNDAY PRS in Session	28 20 Tevet	FRIDAY No RFEC
6 28 Kislev	THURSDAY Hanukkah	17 9 Tevet	MONDAY	29 21 Tevet	SATURDAY Morning Service ..... 9:30 AM Minchah/Ma'ariv/Havdalah ..... 4:46 PM <b>5:46 PM Havdalah Shavua Tov!</b>
7 29 Kislev	FRIDAY Hanukkah	18 10 Tevet	TUESDAY	30 22 Tevet	SUNDAY No PRS
8 30 Kislev	SATURDAY Hanukkah Morning Service ..... 9:30 AM Birthday Shabbat ..... 9:30 AM Minchah/Ma'ariv/Havdalah ..... 4:38 PM <b>5:38 PM Havdalah Shavua Tov!</b>	19 11 Tevet	WEDNESDAY	31 23 Tevet	MONDAY No RFEC Offices close at 12pm
9 1 Tevet	SUNDAY Hanukkah No PRS	20 12 Tevet	THURSDAY No RFEC		
10 2 Tevet	MONDAY	21 13 Tevet	FRIDAY No RFEC No PRS		
11 3 Tevet	TUESDAY	22 14 Tevet	SATURDAY Morning Service ..... 9:30 AM Minchah/Ma'ariv/Havdalah ..... 4:42 PM <b>5:42 PM Havdalah Shavua Tov!</b>		
		23 15 Tevet	SUNDAY No PRS		

## Candle Lighting Blessing

ברוך אתה ה' אלקינו מלך העולם אשר קדשנו במצותיו וצונו להדליק נר של שבת.

*Barukh ata Adonai Eloheinu melek ha'olam, asher kiddeshanu b'mitzvotav vetzivanu lehadlik ner shel Shabbat.*

### Service Schedule

Shabbat CBS		Weekdays	
Kabbalat Shabbat	FRIDAY . . . . . 6:00 PM	Minchah	SUNDAY-THURSDAY . . . . . 6:00 PM
Main Service	SATURDAY . . . . . 9:30 AM	Shacharit	MONDAY-FRIDAY . . . . . 7:00 AM
Library Minyan	SATURDAY . . . . . 9:30 AM		
Minchah	DECEMBER 1 . . . . . 4:39 PM	<b>Shabbat Services and Sunday morning Shacharit</b>	
Minchah	DECEMBER 8 . . . . . 4:38 PM	will be held at CBS, 14200 Lamar.	
Minchah	DECEMBER 15 . . . . . 4:39 PM	<b>Weekday Minyan</b> will be held at <b>Appleman</b>	
Minchah	DECEMBER 22 . . . . . 4:42 PM	<b>Synagogue, Village Shalom, 5500 W. 123rd St.</b>	
Minchah	DECEMBER 29 . . . . . 4:46 PM	<b>Please Note: On Tuesday, Wednesday and Fridays,</b>	
Shacharit	SUNDAY . . . . . 8:00 AM	<b>Ohev Shalom</b> will join us for the Morning Minyan.	





David M. Glickman

*Senior Rabbi*

Hazzan Tahl Ben-Yehuda

*Director of Congregational Learning*

Bernie Fried

*Executive Director*

Alan L. Cohen

*Rabbi Emeritus*

Judy Jacks Berman

*Director, RFECEC*

Art Federman

*President*

Maggie Hultman

*Scroll Design*

The Congregation Beth Shalom Scroll (USPS531-420) is published monthly by Congregation Beth Shalom, 14200 Lamar, Overland Park, KS 66223. Annual Subscription \$24.00. Periodical Postage Paid in Kansas City, MO.

**DATED MATERIAL**

**POSTMASTER:** Send address changes to CONGREGATION BETH SHALOM SCROLL, 14200 Lamar, Overland Park, KS 66223.

*Congregation Beth Shalom, an egalitarian Conservative synagogue, is a welcoming community of individuals from diverse backgrounds, strengthening connections with God, Torah and the Jewish people through communal commitment to prayer, study and acts of loving kindness.*

## December Highlights

**Warm Up America!**

Decemeber 5

**Christmas**Administrative office closed  
Minyan 8:00 am**Scroll Deadline***Submit articles to the Administrative office.*

December 14 for January

**Prayerworks**

December 26

**Christmas Eve**

Administrative office closes at 12 PM

**New Year's Eve**

Administrative office closes at 12 PM

### Office Hours

**MONDAY-THURSDAY** 8:30 AM - 5 PM**FRIDAY** 8:30 AM - 3 PM*Closed on Federal Holidays*

### Mt. Carmel Cemetery Hours 913-218-8629

**MONDAY & WEDNESDAY** 8:00 AM - 4:30 PM**TUESDAY & THURSDAY** CLOSED**SATURDAY** CLOSED**FRIDAY & SUNDAY** 8:00 AM - 4:00 PM**NATIONAL HOLIDAYS** 9:00 AM - 4:00 PM*Exceptions: Thanksgiving, Christmas Day, New Year's Day & Easter***JEWISH HOLIDAYS** CLOSED

### Sisterhood Gift Shop Hours

*During Business Hours***913-647-7298****MONDAY-THURSDAY** 10:00 AM - 2:30 PM**FRIDAY** 10:00 AM - 12:30 PM**SUNDAY** 9:30 AM - 12:30 PM*Other Hours***BY APPOINTMENT ONLY**Call Mary Weiner **913-642-9363** or **913-406-9296****FOR B'NEI MITZVAH REGISTRIES**Call Tina Chapman **913-345-8773**

## Parashat HaShavua *For more information, contact Svetlana Sorkin at 913-393-1715 or saraliorasedu@hotmail.com.*

Parashat HaShavua is an ongoing, monthly program taking place every third Shabbat of the month at 9:00 am in the conference room. The goal of this program is to engage its participants in a stimulating discussion of the weekly torah portion in a friendly atmosphere, where the difference of opinions is respected and questions are encouraged.

The next session will take place on December 15, when **PARASHAT VAYIGASH** will be discussed. An informal atmosphere and deep level of discussion are the trademarks of this gathering. No prior experience is required, and everybody is welcome to join.

